

CERTIFICATE OF LOCATION OF GOVERNMENT CORNER

EAST QUARTER Corner of Section 27, Township 39, Range 25, 4TH P.M.

STATE OF MINNESOTA, County of KANABEC

At the corner location shown on the sketch:

FOUND THIS MONUMENT
AND ESTABLISHED G.P.S. COORDINATES ON ITS LOCATION.

Kanabec County U.S. Survey Feet Coordinates
NAD 1983, HARN 1996 Adjustment
Obtained by RTK GPS Observation

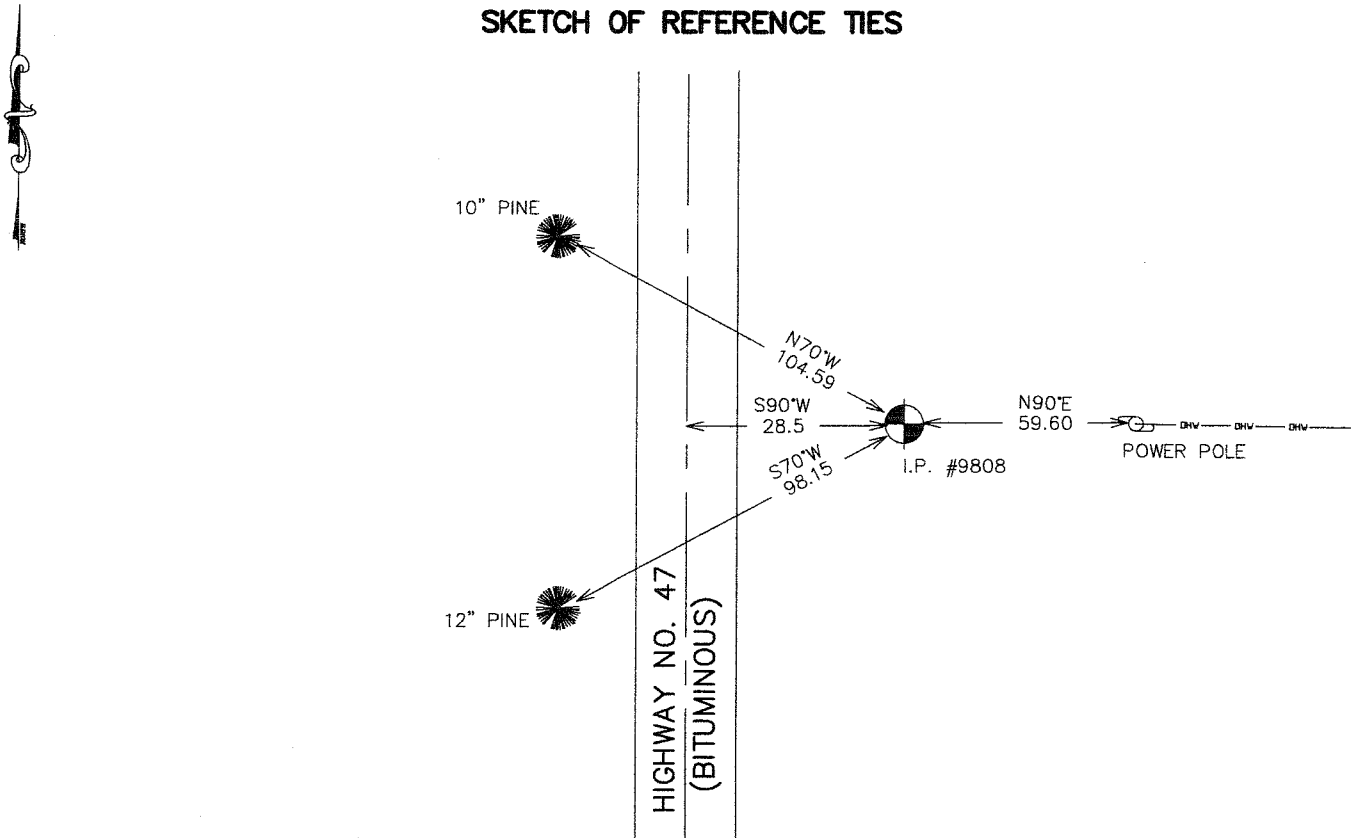
Northing= 140254.42

Easting= 364566.85

Note: NAD 1983, HARN 1996 Adjustment
coordinates are NOT compatible with
NAD 1983 coordinates

Note: 1 Meter=3937/1200 U.S. Survey Feet

SKETCH OF REFERENCE TIES



Statement of evidence relative to this corner location is on back of page.

I hereby certify that this document and the data contained herein was prepared by me or under my direct supervision.

Ernest J. Lund March 24, 2007
Signature Date

Registration No. Minn No 9808

Land Surveyor, Professional Engineer

County Surveyor, County Engineer

OFFICE OF THE COUNTY RECORDER

County of _____

I hereby certify that this document was filed in the County Recorder's office at _____ M. on the

_____ day of _____ A.D., 20__

County Recorder _____

BY _____ Deputy

DOCUMENT NO. _____

EAST QUARTER CORNER SECTION 27, T39, R25

STATEMENT OF EVIDENCE

THE ORIGINAL CORNER WAS SET BY DEPUTY SURVEYOR SILAS BARNARD IN JUNE 1855 AND TWO BEARING TREES ESTABLISHED. ANY VISIBLE EVIDENCE FOR THE CORNER OR BEARING TREES NO LONGER REMAIN.

THIS CORNER FALLS $28' \pm$ EAST OF THE CENTERLINE OF TRUNK HIGHWAY NO. 47 AND ON AN OCCUPATION LINE RUNNING EAST.

JOHN NELSON RECORDED A SURVEY ON PAGES 86-87 IN BOOK A1 OF SURVEYS FOR SECTION 27 DONE ON APRIL 4TH 1911.

JOHN STATES HE FOUND A PREVIOUSLY SET SANDSTONE AT THIS QUARTER CORNER. HIS MEASURED DISTANCES FOR THE EAST LINE OF SECTION 27 WAS 80.84 CHAINS (5335.44 FEET) WITH THE QUARTER CORNER BEING SET EQUIDISTANT FROM THE NORTHEAST TO SOUTHEAST CORNERS.

JOHN NELSON ALSO RECORDED A SURVEY ON PAGE 7 IN BOOK 1 OF 2 OF SURVEYS FOR THE EAST LINE OF SECTION 27. IN HIS NOTES HE MEASURED A DISTANCE OF 80.64 CHAINS (5322.24 FEET) ALONG EAST LINE OF SECTION 27. THE RIGHT OF WAY FOR TRUNK HIGHWAY 47 DOESN'T INDICATE ANY MONUMENT OR DISTANCES ALONG THIS SECTION LINE. TODAY E.G. RUD AND SONS MEASURE 5328.12 FEET FROM NORTHEAST TO SOUTHEAST CORNERS OF SECTION 27.

THEREFORE WE SET THIS MONUMENT EQUIDISTANT AND ON LINE BETWEEN NORTHEAST AND SOUTHEAST CORNERS OF SECTION 27. THIS IS IN HARMONY FROM PREVIOUS SURVEYS AND LINES OF OCCUPATION.

IN FEBRUARY 2007 NEW TIES WERE TAKEN AND KANABEC COUNTY COORDINATES WERE ESTABLISHED USING G.P.S. EQUIPMENT.