

CERTIFICATE OF LOCATION OF GOVERNMENT CORNER

SOUTH QUARTER Corner of Section 26, Township 39, Range 25, 4TH P.M.

STATE OF MINNESOTA, County of KANABEC

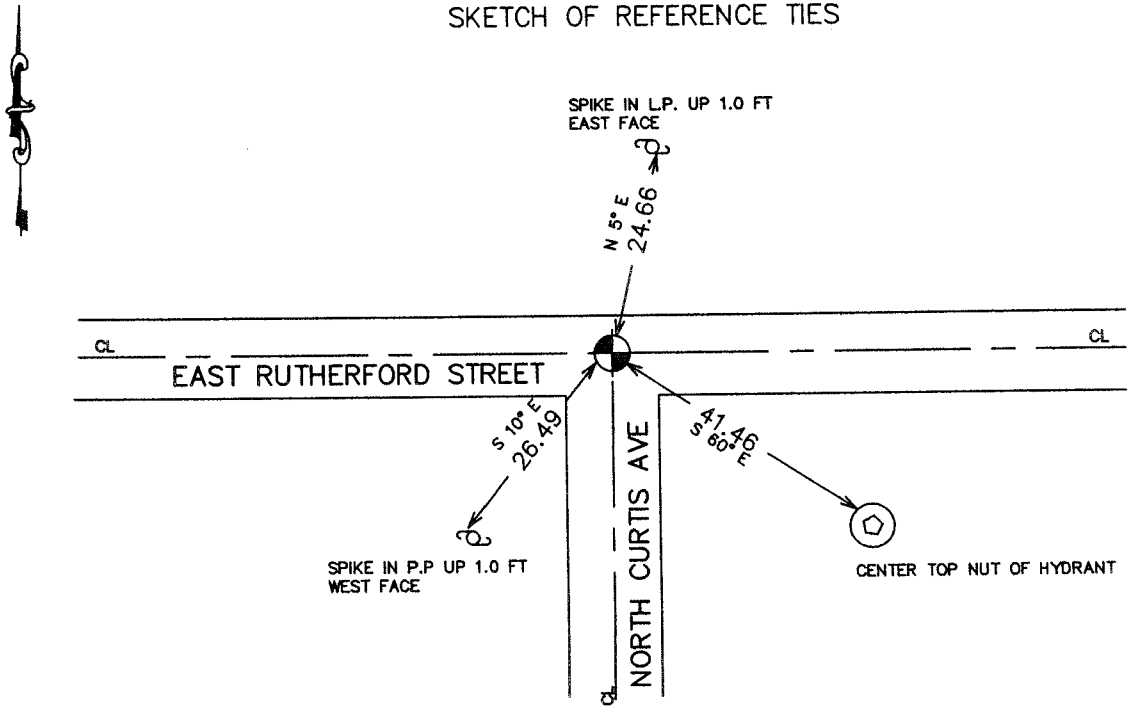
At the corner location shown on the sketch:
On 06/ /2003 Found a Kanabec County Monument.

Kanabec County U.S. Survey Feet Coordinates
NAD 1983, HARN 1996 Adjustment
Obtained by RTK GPS Observation

Northing= 137583.89
Easting= 367271.47

Note: NAD 1983, HARN 1996 Adjustment
coordinates are NOT compatible with
NAD 1983 coordinates
Note: 1 Meter=3937/1200 U.S. Survey Feet

SKETCH OF REFERENCE TIES



Statement of evidence relative to this corner location is on back of page.

I hereby certify that this document and the data contained herein was prepared by me or under my direct supervision.

Ernest J. Rud 6-30-2004
Signature Date

Registration No. 9808

Land Surveyor, [] Professional Engineer
[] County Surveyor, [] County Engineer

OFFICE OF THE COUNTY RECORDER

County of _____
I hereby certify that this document was filed in the County Recorder's office at _____ M. on the _____ day of _____ A.D., 20____
County Recorder _____
BY _____ Deputy

DOCUMENT NO. _____

Statement of Evidence: North Quarter Corner of Section 35, Township 39 North, Range 25 West, 4th Principal Meridian, Kanabec County, Minnesota.

The Original Public Land Survey was run in 1855, and a wood post was set to mark the corner. Bearing tree ties were made to one white birch and a pine.

In 1899, on a plat "Ole T. Olson Addition to Ogilvie" Thomas Vickery, Surveyor, shows the description of the plat commencing at this corner, but does not state what was found or set.

In 1900, Thomas Vickery, Surveyor, made a survey along the North and East lines of Section 35, but does not state what was found or set

In 1901, Thomas Vickery, Surveyor, made a survey in Section 35, T. 39 N. R. 25 W., running to the North Quarter Corner, then running East, in Surveyor's Record Book A, Page 236.

In 1901, former County Surveyor, John Nelson, made a Township Road Order Survey, beginning at this corner, and running East. Recorded in Road Record Number 2, Page 10.

There is an East-West city street here presently. State Highways Number 23 and Number 47 previously ran along the location.

On an undated plat map "State Subdivision of the South ½ of the SW1/4 of Section 26, T. 39 N., R. 25 W.," an iron is shown marking the Quarter Corner.

In 1943, The Minnesota Department of Transportation shows a tie, 33.0 feet North of a lot corner, for the corner, in Book No. 6 of alignment for S.P. 3301-02 TH 23 "Lw" line from station 683+03.8 to station 1014+11.2.

In 1951, The Minnesota Department of Transportation, on Right of Way Map for S.P. 3301 Index file no. 13-62, shows the corner on the centerline of Rutherford Street, no mention of what was found at the corner.

On July 5, 1989, Mr. M.B. Rude, Kanabec County Surveyor, found a ½ inch iron pipe that was placed by M.B. Rude in 1972, by locations per State Right of Way Map and existing city plat monumentation. This iron was accepted at the best available evidence of the original corner location and new ties were established to preserve its location.

On July 31, 1989, Mr. M.B. Rude, Land Surveyor License No. 8195, shows, on a Certificate of Survey for the Kanabec County Highway Department, an iron pipe or pin for the corner.

In 1990, on a plat "Railroad Addition to Ogilvie", Mr. M.B. Rude, Land Surveyor license No. 8195, shows a Kanabec County Land Corner Monument at this location.

In January of 2002, The Minnesota Department of Transportation recovered a ½ inch iron pipe down 0.3 feet. Also found 3 reference ties as shown by Mr. Rude's certificate. Bearing ties were updated. The Minnesota Department of Transportation accepts this position as the correct location for the corner.

For details and survey analysis, contact the Minnesota Department of Transportation District Surveys Office in Baxter, Minnesota.

(2003)

In June 2003 we ran a survey around Sections 25 and 26 and found this monument. We established Kanabec County Coordinates using GPS equipment.