

# CERTIFICATE OF LOCATION OF GOVERNMENT CORNER

SOUTHWEST Corner of Section 26, Township 39, Range 25, 4TH P.M.

STATE OF MINNESOTA, County of KANABEC

At the corner location shown on the sketch:  
On 06/ /2003 Found a Kanabec County Monument.

Kanabec County U.S. Survey Feet Coordinates  
NAD 1983, HARN 1996 Adjustment  
Obtained by RTK GPS Observation

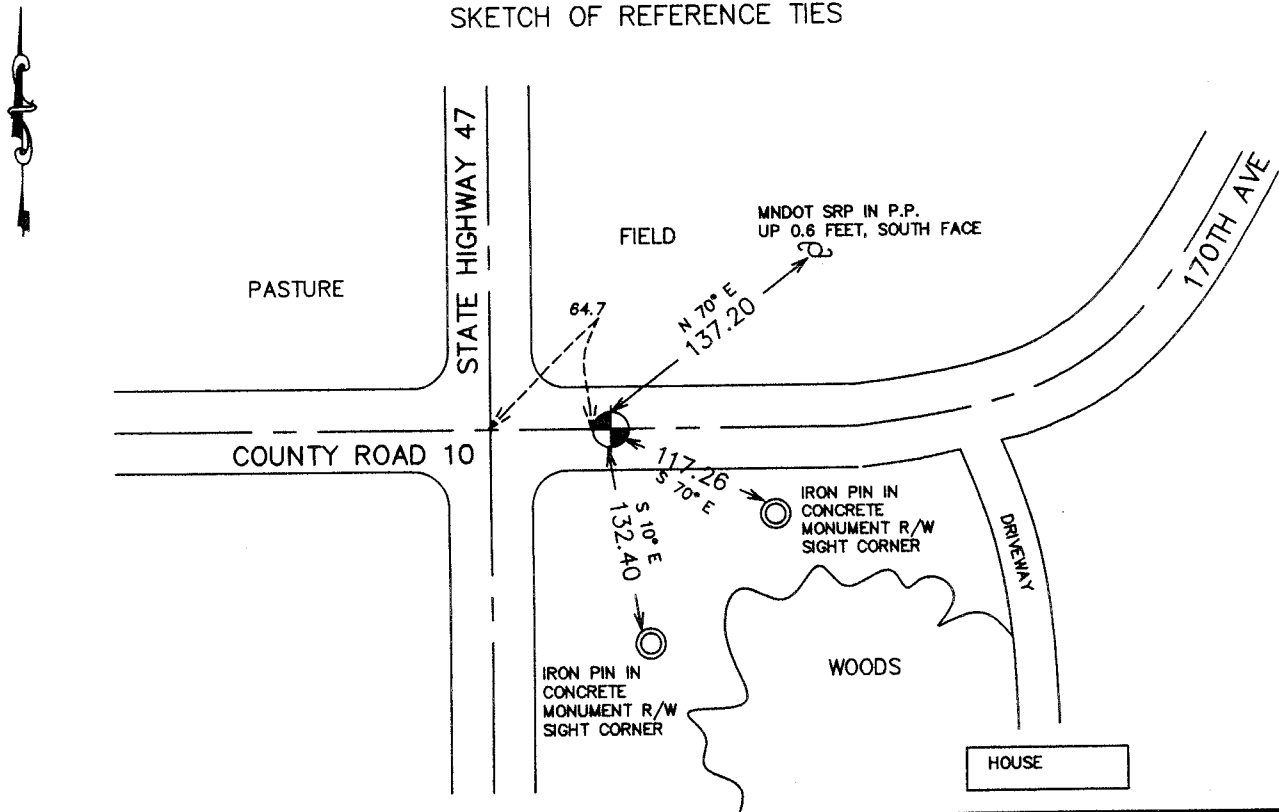
Northing= 137590.58

Easting= 364603.25

Note: NAD 1983, HARN 1996 Adjustment  
coordinates are NOT compatible with  
NAD 1983 coordinates

Note: 1 Meter=3937/1200 U.S. Survey Feet

SKETCH OF REFERENCE TIES



Statement of evidence relative to this corner location is on back of page.

I hereby certify that this document and the data contained herein was prepared by me or under my direct supervision.

Ernest Blund  
Signature

8-04-2004  
Date

Registration No. 9808

Land Surveyor,      [ ] Professional Engineer

[ ] County Surveyor,      [ ] County Engineer

## OFFICE OF THE COUNTY RECORDER

County of \_\_\_\_\_

I hereby certify that this document was filed in the County Recorder's office at \_\_\_\_\_ M. on the \_\_\_\_\_ day of \_\_\_\_\_ A.D., 20\_\_\_\_

County Recorder \_\_\_\_\_

BY \_\_\_\_\_ Deputy

DOCUMENT NO. \_\_\_\_\_

Statement of Evidence: Northeast Corner of Section 34, Township 39 North, Range 25 West, 4<sup>th</sup> Principle Meridian, Kanabec County, Minnesota.

The Original Public Land Survey was run in 1855, and a wood post was set to mark the corner. Bearing tree ties were made to three pines and a sugar maple. All Bearing trees are now gone.

In 1899, on a plat named "Whited Addition" To Ogilvie Kanabec Co. Minn, Mr. T.B. Vickery, Surveyor, set a stone at the Northwest Corner of Section 35, Township 39, Range 25.

In 1901, Mr. John Nelson, Surveyor, did a road survey in Section 27, T. 39, R. 25, commencing at the Southeast Corner of said Section 27 and running West. Recorded in Surveyor's Road Record Book 2, Page 4. Mr. Nelson does not state what the corner was monumented by.

In 1941, The Minnesota Department of Transportation shows a stone monument at the location in book no. 5 of alignment for S.P. 3301-01 TH 23 "Lw" line from station 1860+48.6 to station 2151+47.9.

In 1951, The Minnesota Department of Transportation, on Right of Way Map for S.P. 3301, Index file no. 13-62, shows the corner as a stone monument in place at the Section Corner.

In 1966, Mr. Ken Wasnie, EIT -II, Mn Highway Dept, found a stone marked with a "X" 3 inches below the surface. Mr. Wasnie set an 4 inch by 20 inch cast iron monument above the found stone and took 2 reference ties to iron pins in concrete. Mr. Wasnie filed a certificate with the Kanabec County Register Of Deeds.

On July 31, 1989, Mr. M.B. Rude, Land Surveyor License no. 8195, shows, on a Certificate of Survey for the Kanabec County Highway Department, a Kanabec County Land Corner Monument for the corner.

In 1990, On a plat "Railroad Addition to Ogilvie" Mr. M.B. Rude, Land Surveyor license No. 8195, shows a Kanabec County Land Corner Monument at this location.

In January of 2002, The Minnesota Department of Transportation recovered a Cast Iron Monument down 0.5 feet and 64.7 feet east of trunk highway number 47. Also found 2 reference ties as shown by Mr. Wasnie's certificate. New Bearing ties were made to a power pole and the 2 iron pins in concrete. The Minnesota Department of Transportation accepts this position as the correct location for the corner.

For details and survey analysis, contact the Minnesota Department of Transportation District Surveys Office in Baxter, Minnesota.

(2003)

In June 2003 we ran a survey around Sections 25 and 26 and found this monument. We established Kanabec County Coordinates using GPS equipment.