

CERTIFICATE OF LOCATION OF GOVERNMENT CORNER

EAST QUARTER Corner of Section 34, Township 39, Range 25, 4TH P.M.

STATE OF MINNESOTA, County of KANABEC

At the corner location shown on the sketch:
FOUND THIS MONUMENT
AND ESTABLISHED G.P.S. COORDINATES ON ITS LOCATION.

Kanabec County U.S. Survey Feet Coordinates
NAD 1983, HARN 1996 Adjustment
Obtained by RTK GPS Observation

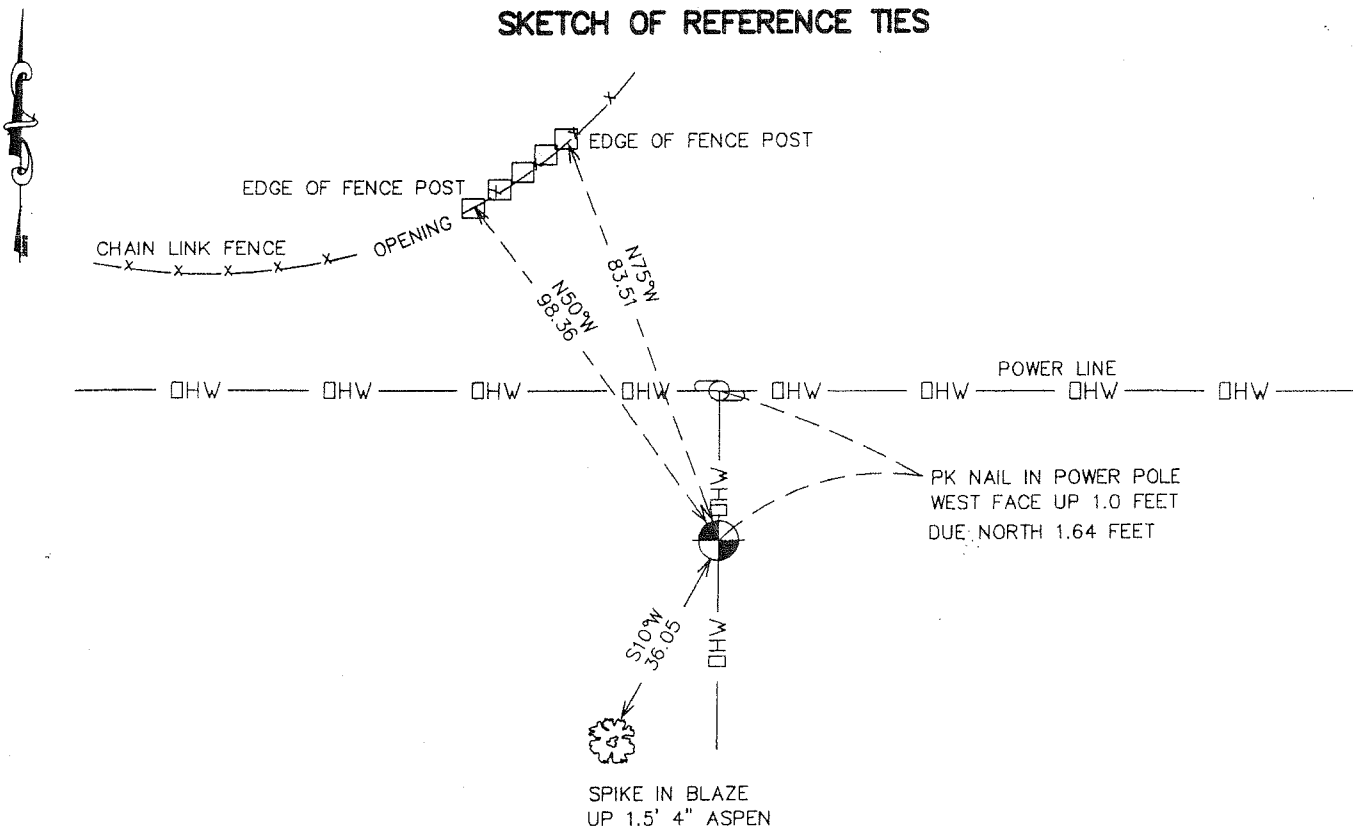
Northing= 135144.25

Easting= 364648.76

Note: NAD 1983, HARN 1996 Adjustment
coordinates are NOT compatible with
NAD 1983 coordinates

Note: 1 Meter=3937/1200 U.S. Survey Feet

SKETCH OF REFERENCE TIES



Statement of evidence relative to this corner location is on back of page.

I hereby certify that this document and the data contained herein was prepared by me or under my direct supervision.

Ernest J. Rud Signature 1-24-2007 Date

Registration No. Miss No 9808

Land Surveyor, [] Professional Engineer
[] County Surveyor, [] County Engineer

OFFICE OF THE COUNTY RECORDER

County of _____

I hereby certify that this document was filed in the County Recorder's office at _____ M. on the _____ day of _____ A.D., 20 _____

County Recorder _____

BY _____ Deputy

DOCUMENT NO. _____

EAST QUARTER CORNER SECTION 34, T39, R25

STATEMENT OF EVIDENCE

The Original Public Land Survey was run in 1855, and a wood post was set to mark the corner.

Bearing tree ties were made to a pine and a sugar maple. All Bearing trees are now gone.

In 1900, Thomas Vickory made a Section subdivision survey in Section 35, but he does not state what was found or set at this location.

In 1903, the former County Surveyor, John Nelson, made a Road Order Survey in Section 35, recorded in Road Order No.2, Page 22. In this survey he shows new ties to a pine stump and an oak.

In 1915, on plat "Axel Anderson's 2nd Addition to Ogilvie", a stone monument is shown at the Southwest Corner of the Southwest 1/4 of the Northwest 1/4, Section 35, T. 39, R. 25.

In 1941, The Minnesota Department of Transportation shows an assumed corner at the intersection of fences North, South and East, in Book No.5 of alignment for S.P. 3301-01 TH 23 "Lw" line from station 1860+48.6 to station 2151+47.9.

On July 27, 1989, Mr. M.B. Rude, Kanabec County Surveyor, made a search at this area for any evidence of the original corner location, and found a Y2 inch iron pipe with plastic cap marked 10918. This iron fit a proportional split between the Northeast and Southeast Corners of the Section, and falls on the North-South fence line. Mr. Rude accepted this as the best evidence of this original corner location, and replaced it with a 7/8 inch by 36 inch capped rebar, to preserve the location, and took new reference ties. A new certificate was filed at the Kanabec County Recorder's Office.

On July 31, 1989, Mr. M.B. Rude, Land Surveyor License No. 8195, shows, on a Certificate of Survey for the Kanabec County Highway Department, a Kanabec County Land Corner Monument for the corner.

In January, 2002, The Minnesota Department of Transportation recovered a 7/8 inch capped rebar, up 0.2 feet. Also found 1 reference tie as shown by Mr. Rude's Certificate. New Bearing ties were made to a power pole, 2 posts, and a 4" aspen. The Minnesota Department of Transportation accepts this position as the correct location for the corner.

For details and survey analysis, contact the Minnesota Department of Transportation District Surveys Office in Baxter, Minnesota.

In July 2006, E.G. Rud and Sons established Kanabec County Coordinates on this monument.