

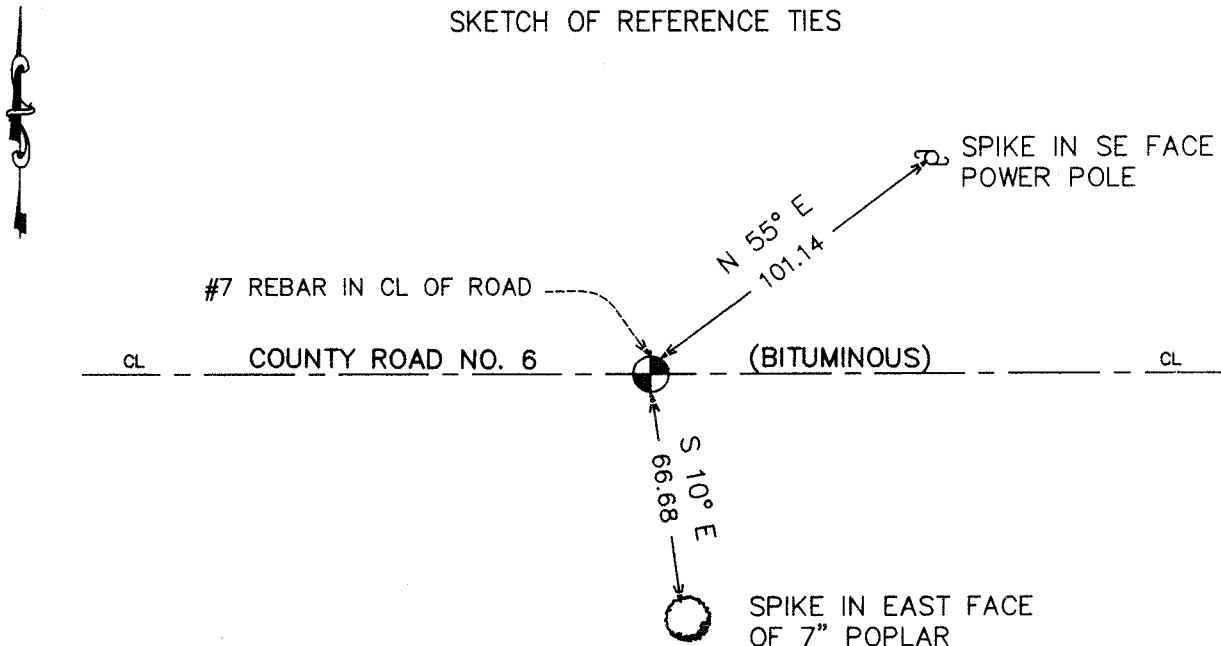
CERTIFICATE OF LOCATION OF GOVERNMENT CORNER

NORTHWEST Corner of Section 12, Township 39, Range 25, 4TH P.M.
 STATE OF MINNESOTA, County of KANABEC

At the corner location shown on the sketch:
 On 08/ /2004 Set a Kanabec County Monument.

Kanabec County U.S. Survey Feet Coordinates
 NAD 1983, HARN 1996 Adjustment
 Obtained by RTK GPS Observation
 Northing= 158796.555
 Easting= 369866.39
 Note: NAD 1983, HARN 1996 Adjustment
 coordinates are NOT compatible with
 NAD 1983 coordinates
 Note: 1 Meter=3937/1200 U.S. Survey Feet

SKETCH OF REFERENCE TIES



Statement of evidence relative to this corner location is on back of page.

I hereby certify that this document and the data contained herein was prepared by me or under my direct supervision.

Ernest J. Reid 2-1-2005
Signature Date

Registration No. 9808

Land Surveyor, [] Professional Engineer

[] County Surveyor, [] County Engineer

OFFICE OF THE COUNTY RECORDER

County of _____

I hereby certify that this document was filed in the County Recorder's office at _____ M. on the _____ day of _____ A.D., 20____

County Recorder _____

BY _____ Deputy

DOCUMENT NO. _____

STATEMENT OF EVIDENCE

From Tie Sheet 683

All of the original government bearing trees are now gone.

The former County Surveyor, John Nelson, set a stone with a "+" carved on the top at this corner in 1910, in a survey of Section 11.

Certificate #15 on file at the County Recorder's Office BY George H. Jenks, dated March 1925, shows a sandstone marked with a "+" at this corner.

Certificate #160 on file at the County Recorder's Office shows a stone was replaced from the ties at Engineer's Office and new ties were taken, dated February 1936 (no name). These ties are now gone.

On April 25, 1983, we ran a survey along the north line of Sections 11 and 12 and located the existing monuments and lines of occupation.

On April 26, 1983, we made an excavation with the county backhoe at this corner. At 1 foot below the surface, we found a sandstone marked with a "+" per certificate #160.

We lowered the sandstone and set a 7/8" by 24" capped rebar on top of the sandstone to mark this corner.

In August 2004, we did a survey around Sections 11, 12, and 13 to locate existing monumentation and tie in lines of occupation. County Road No. 6 had been reconstructed since 1983, so no evidence or ties to the corner set by M.B. Rude remained. We reset the corner from M.B. Rude's survey, set a #7 rebar, took new ties and established Kanabec County coordinates using GPS equipment.