

CERTIFICATE OF LOCATION OF GOVERNMENT CORNER

EAST QUARTER Corner of Section 11, Township 39, Range 25, 4TH P.M.

STATE OF MINNESOTA, County of KANABEC

At the corner location shown on the sketch:
 FOUND STONE
 SET #7 REBAR WITH ALUMINUM CAP
 AND ESTABLISHED KANABEC COUNTY COORDINATES ON ITS LOCATION.

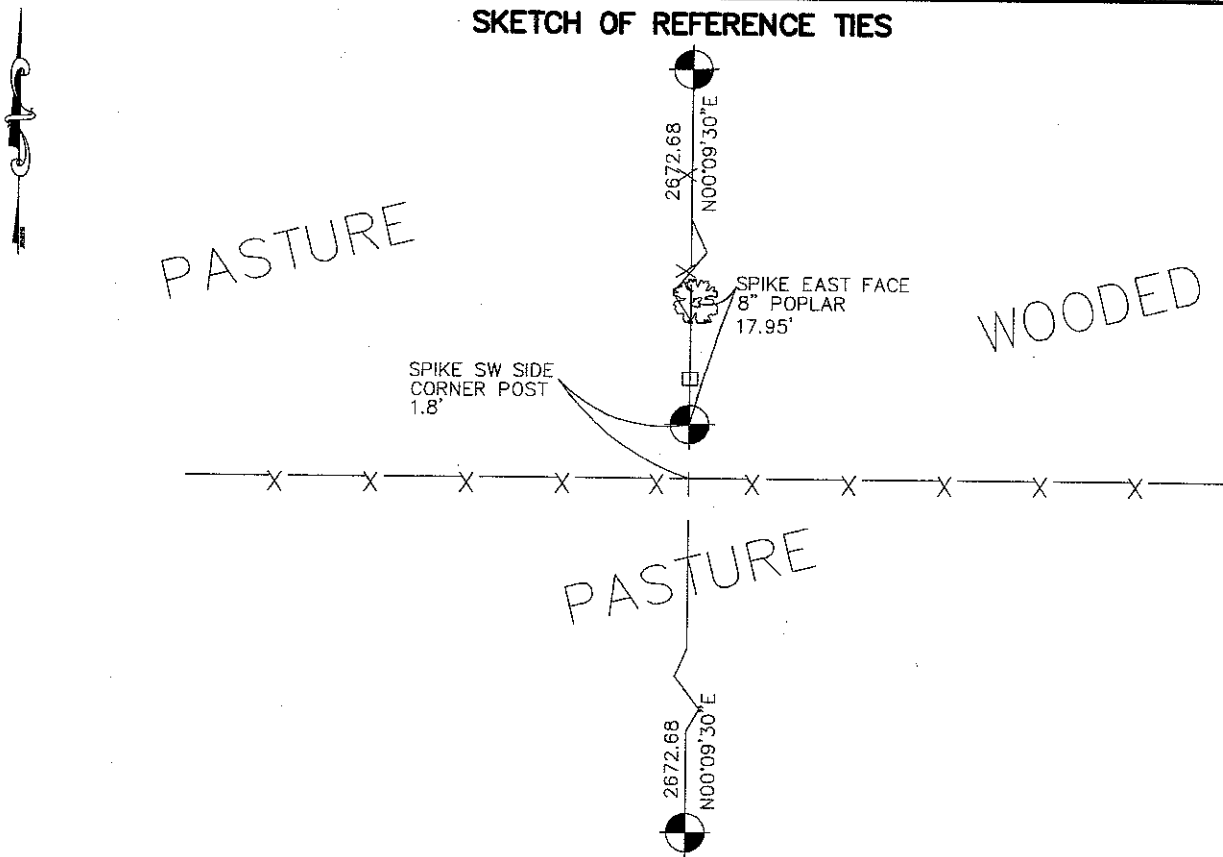
Kanabec County U.S. Survey Feet Coordinates
 NAD 1983, HARN 1996 Adjustment
 Obtained by RTK GPS Observation

Northing= 156123.89
 Easting= 369859.00

Note: NAD 1983, HARN 1996 Adjustment coordinates are NOT compatible with NAD 1983 coordinates

Note: 1 Meter=3937/1200 U.S. Survey Feet

SKETCH OF REFERENCE TIES



Statement of evidence relative to this corner location is on back of page.

I hereby certify that this document and the data contained herein was prepared by me or under my direct supervision.

Ernst J. Reed 11-25-2007
Signature Date

Registration No. Minn No. 9808

Land Surveyor, Professional Engineer
 County Surveyor, County Engineer

OFFICE OF THE COUNTY RECORDER

County of _____

I hereby certify that this document was filed in the County Recorder's office at _____ M. on the _____ day of _____ A.D., 20____

County Recorder _____

BY _____ Deputy

DOCUMENT NO. _____

EAST QUARTER CORNER SECTION 11, T39, R25

STATEMENT OF EVIDENCE

THE ORIGINAL CORNER WAS SET BY DEPUTY SURVEYOR SILAS BARNARD IN JUNE, 1855 AND TWO BEARING TREES ESTABLISHED – NO VISIBLE EVIDENCE REMAINS FOR THE CORNER OR BEARING TREE.

IN BOOK A1 OF SURVEYS PAGE 68 AND 69 JOHN NELSON RECORDED A SURVEY OF SECTION 11 DATED OCTOBER 14TH 1910. JOHN MEASURED A DISTANCE OF 5346 FEET FROM NORTHEAST CORNER TO SOUTHEAST CORNER OF SECTION 11. TODAY WE MEASURED A DISTANCE OF 5345.36 FEET JOHN STATED HE SET A STONE AT THIS CORNER.

IN OCTOBER 2007 E.G. RUD AND SONS RAN A SURVEY AROUND SECTION 11 TO LOCATE EXISTING MONUMENTS AND LINES OF OCCUPATION. THIS CORNER FALLS AT THE INTERSECTION OF A FENCE RUNNING EAST–WEST AND A FENCE RUNNING NORTH. A POINT WAS SET ON LINE AND EQUIDISTANT FROM NORTHEAST TO SOUTHEAST CORNER OF SECTION 11. THIS FELL 0.4' SOUTH OF FENCE CORNER. WHILE SETTING THE MONUMENT A STONE WAS ENCOUNTERED DIRECTLY UNDERNEATH. MONUMENT WAS LEFT 0.7' ABOVE GROUND, TIES TAKEN, AND KANABEC COUNTY COORDINATES ESTABLISHED ON THIS LOCATION.