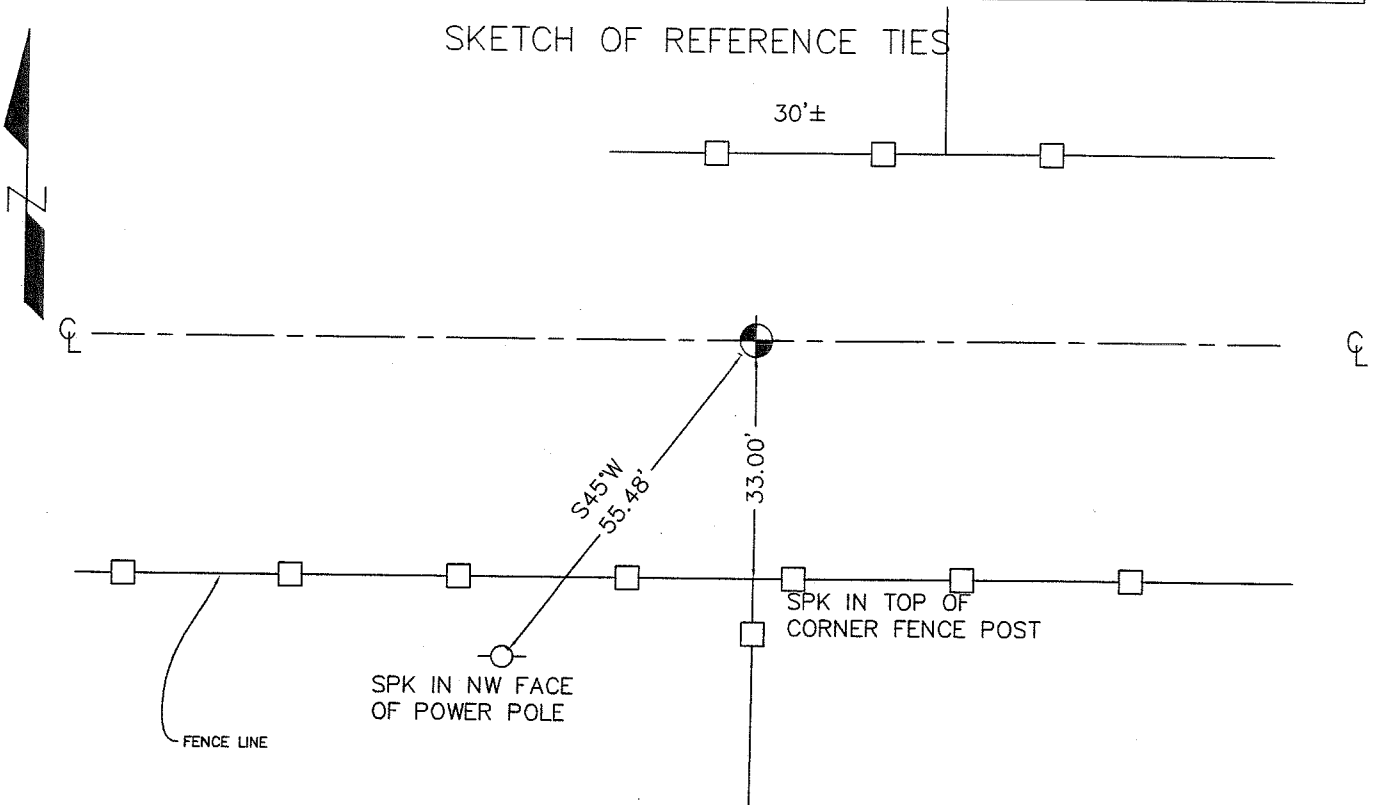


# CERTIFICATE OF LOCATION OF GOVERNMENT CORNER

NORTH QUARTER CORNER OF SECTION 13, TOWNSHIP 39, RANGE 25, 4TH PM.  
STATE OF MINNESOTA, COUNTY OF KANABEC

AT THE CORNER LOCATION SHOWN ON THE SKETCH:  ON 08/25/04 SET KANABEC COUNTY ALUMINUM MONUMENT	KANABEC COUNTY U.S. SURVEY FEET COORDINATES NAD 1983, HARN 1996 ADJUSTMENT OBTAINED BY RTK GPS OBSERVATION  NOTE: NAD 1983, HARN 1996 ADJUSTMENT COORDINATES ARE NOT COMPATIBLE WITH NAD 1983 COORDINATES  NOTE: 1 METER = $\frac{3937}{1200}$ U.S. SURVEY FEET
	NORTHING = <u>153378.91</u>  EASTING = <u>372652.52</u>

## SKETCH OF REFERENCE TIES



STATEMENT OF EVIDENCE RELATIVE TO THIS CORNER LOCATION IS ON THE BACK OF THIS PAGE

I HEREBY CERTIFY THAT THIS DOCUMENT AND THE DATA CONTAINED HEREIN WAS PREPARED BY ME OR UNDER MY DIRECT SUPERVISION.

*Ernest Hrud*  
SIGNATURE

11-18-2005  
DATE

REGISTRATION NO. Minn No 9808

- LAND SURVEYOR       COUNTY SURVEYOR  
 PROF. ENGINEER       COUNTY ENGINEER

OFFICE OF THE COUNTY RECORDER

COUNTY OF \_\_\_\_\_

I HEREBY CERTIFY THAT THIS DOCUMENT WAS FILED IN THE COUNTY RECORDER'S OFFICE AT \_\_\_\_\_ M. ON THE \_\_\_\_\_ DAY OF \_\_\_\_\_, 2\_\_\_\_.

COUNTY RECORDER \_\_\_\_\_

BY \_\_\_\_\_, DEPUTY

DOCUMENT NO. \_\_\_\_\_

## STATEMENT OF EVIDENCE

---

Original corner was set by Deputy Surveyor Silas Barnard in June 1855. No evidence to the original corner or bearing trees remain, and there are no records of surveys at the Kanabec County Highway Department.

There is a road opening on file at the Kanabec County Court House dated 1907 and J.B. Vickerey measured the north line of Section 13 to be 83 chains or 5478 feet.

Today we measured this mile to be 5568 feet.

In August 2004, we ran a survey around Sections 11, 12, 13 and 14 to locate existing monuments and tie in lines of occupation.

This corner falls on the centerline of an east-west gravel road and a fence line. This is within 8 feet of being equidistant from the NE and NW corners of Section 14.

On August 25, 2004, we excavated an area 20' long, 10' wide and 1' into natural ground at the centerline of road and fence line extension.

We found two flat sandstones 9"x14" but neither stone had a chiseled "x". Therefore we accepted the centerline of road and fence line to the south as the best evidence for the location of this corner. We set a #7 rebar with an aluminum cap, took ties and established Kanabec County coordinates on this position.

---

Bob Lobdell, owner of the E $\frac{1}{2}$  of the NW $\frac{1}{4}$  of Section 13 for over 50 years testified that the fence was what he used for the property line through the years.