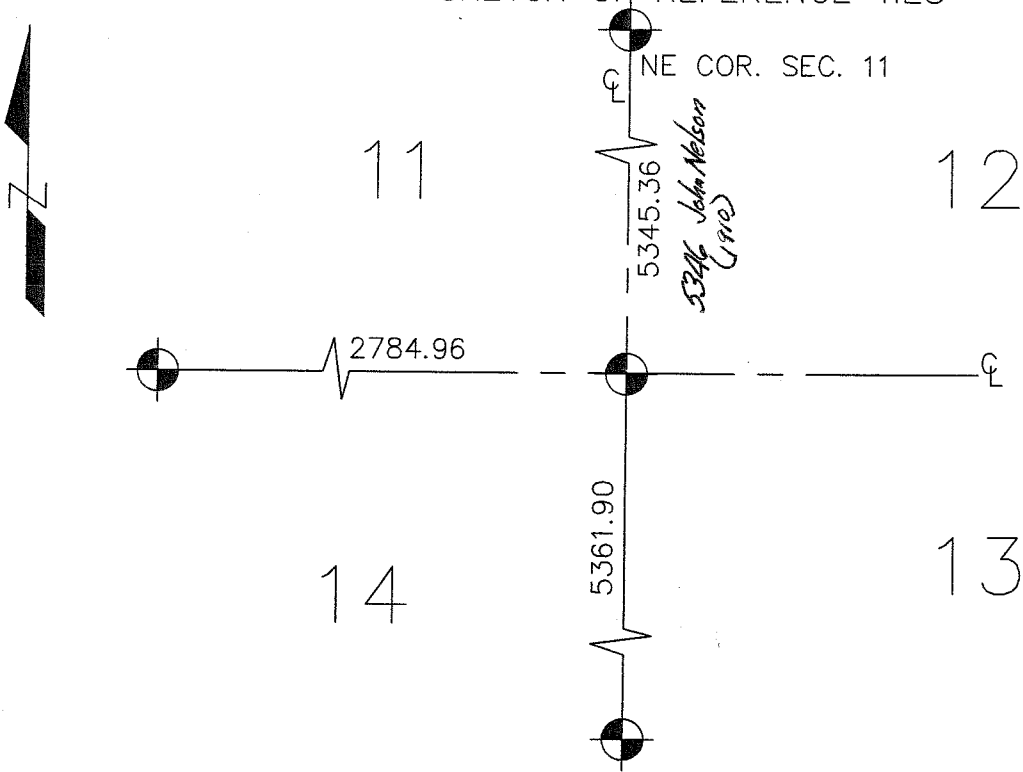


# CERTIFICATE OF LOCATION OF GOVERNMENT CORNER

NORTHEAST CORNER OF SECTION 14, TOWNSHIP 39, RANGE 25, 4TH PM.  
 STATE OF MINNESOTA, COUNTY OF KANABEC

AT THE CORNER LOCATION SHOWN ON THE SKETCH:  ON 08/25/04 SET KANABEC COUNTY MONUMENT	KANABEC COUNTY U.S. SURVEY FEET COORDINATES NAD 1983, HARN 1996 ADJUSTMENT OBTAINED BY RTK GPS OBSERVATION  NOTE: NAD 1983, HARN 1996 ADJUSTMENT COORDINATES ARE NOT COMPATIBLE WITH NAD 1983 COORDINATES  NOTE: 1 METER = $\frac{3937}{1200}$ U.S. SURVEY FEET
	NORTHING= <u>153451.20</u>  EASTING= <u>369851.62</u>

## SKETCH OF REFERENCE TIES



STATEMENT OF EVIDENCE RELATIVE TO THIS CORNER LOCATION IS ON THE BACK OF THIS PAGE

I HEREBY CERTIFY THAT THIS DOCUMENT AND THE DATA CONTAINED HEREIN WAS PREPARED BY ME OR UNDER MY DIRECT SUPERVISION.

Ernest J. Rud 11-18-2005  
 SIGNATURE DATE

REGISTRATION NO. Minn No 9808

- LAND SURVEYOR     COUNTY SURVEYOR  
 PROF. ENGINEER     COUNTY ENGINEER

OFFICE OF THE COUNTY RECORDER

COUNTY OF \_\_\_\_\_

I HEREBY CERTIFY THAT THIS DOCUMENT WAS FILED IN THE COUNTY RECORDER'S OFFICE AT \_\_\_\_\_ M. ON THE \_\_\_\_\_ DAY OF \_\_\_\_\_, 2\_\_\_\_.

COUNTY RECORDER \_\_\_\_\_

BY \_\_\_\_\_, DEPUTY

DOCUMENT NO. \_\_\_\_\_

## STATEMENT OF EVIDENCE

Original corner was set by Deputy Surveyor Sials Barnard in June 1855. No evidence of original corner or bearing trees remain.

In October 1910, John Nelson, former County Surveyor did a survey around Section 11 and stated that he set a stone with a chiseled "x" for this corner.

In August 2004, we ran a survey around Sections 11, 12, 13, and 14 to locate existing monuments and tie in lines of occupation. This corner falls on the centerline of an east-west road and the centerline of a road to the north.

On August 25, we excavated an area 20' by 12' by 1' into original ground. We found a wood stake 2" in diameter that had been sharpened on one end and cut off on the other. This was at CL-CL. The distance to the Northwest corner of Section 14 is 5569.9 feet and John Nelson measured 5563.8 in 1910. John Nelson also measured 5346 feet to the Northeast corner of Section 11 whereas we measured 5345.4 today. We accepted the CL-CL as the perpetuated location for this section corner.

We set a #7 rebar with an aluminum cap, took ties and established Kanabec County coordinates on this position using GPS equipment.