

# CERTIFICATE OF LOCATION OF GOVERNMENT CORNER

EAST QUARTER Corner of Section 14, Township 39, Range 25, 4TH P.M.

STATE OF MINNESOTA, County of KANABEC

SET KANABEC COUNTY MONUMENT AT FENCE INTERSECTION.

Kanabec County U.S. Survey Feet Coordinates  
 NAD 1983, HARN 1996 Adjustment  
 Obtained by RTK GPS Observation

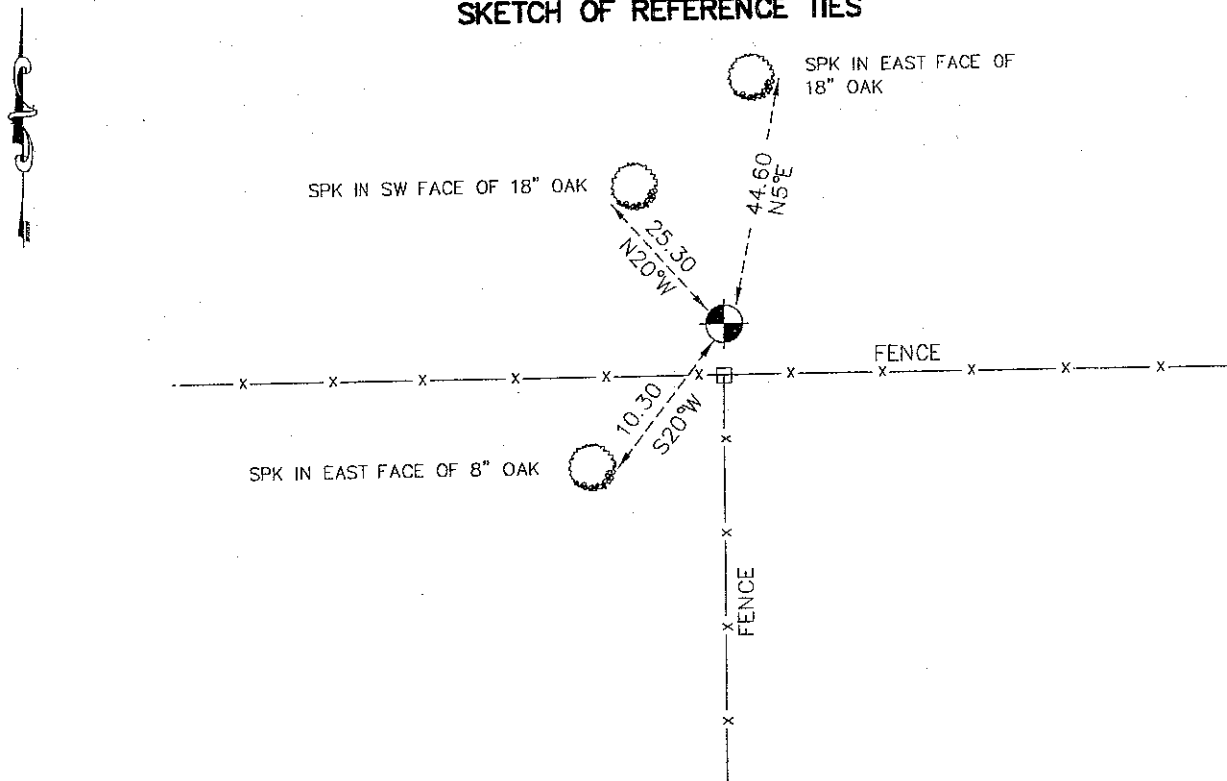
Northing= 150741.30

Easting= 369851.77

Note: NAD 1983, HARN 1996 Adjustment  
 coordinates are NOT compatible with  
 NAD 1983 coordinates

Note: 1 Meter=3937/1200 U.S. Survey Feet

### SKETCH OF REFERENCE TIES



Statement of evidence relative to this corner location is on back of page.

I hereby certify that this document and the data contained herein was prepared by me or under my direct supervision.

Ernest J. Rud  
 Signature

4-29-2009  
 Date

Registration No. 9808

Land Surveyor,       Professional Engineer

County Surveyor,       County Engineer

### OFFICE OF THE COUNTY RECORDER

County of \_\_\_\_\_  
 I hereby certify that this document was filed in the County Recorder's office at \_\_\_\_\_ M. on the \_\_\_\_\_ day of \_\_\_\_\_ A.D., 20\_\_\_\_

County Recorder \_\_\_\_\_  
 BY \_\_\_\_\_ Deputy

DOCUMENT NO. \_\_\_\_\_

E1/4 CORNER SECTION 14, TOWNSHIP 39, RANGE 25

**STATEMENT OF EVIDENCE**

THE ORIGINAL POST WAS SET BY DEPUTY SURVEYOR SILAS BARNARD ON JUNE 23, 1855 AND TWO TAMARACK TREES USED AS BEARING TREES. NO VISIBLE EVIDENCE REMAINS FOR CORNER POST OR BEARING TREES.

THERE ARE NO RECORDS OF ANY SURVEYS DONE ALONG THIS LINE BETWEEN SECTIONS 13 AND 14 AT THE KANABEC COUNTY OFFICE.

IN MARCH 2005 E.G. RUD AND SONS RAN A SURVEY AROUND SECTIONS 13, 14, 23 AND 24 TO LOCATE EXISTING MONUMENTATION AND LINES OF OCCUPATION. THIS CORNER FALLS AT THE INTERSECTION OF AN OLD FENCE RUNNING EAST-WEST WITH A FENCE RUNNING SOUTH. NO OTHER EVIDENCE WAS VISIBLE FOR THIS CORNER SO A KANABEC COUNTY MONUMENT WAS SET JUST ON THE NORTH SIDE OF A VERY OLD CORNER POST.

TIES WERE TAKEN AND KANABEC COUNTY COORDINATES WERE ESTABLISHED USING G.P.S. EQUIPMENT. THIS LOCATION FALLS 0.45 FEET WEST AND 28.72 FEET SOUTH OF A LINE AND SPLIT BETWEEN THE NORTHEAST AND SOUTHEAST CORNERS OF SECTION 14.