

# CERTIFICATE OF LOCATION OF GOVERNMENT CORNER

NORTHEAST Corner of Section 23  
~~26~~, Township 39, Range 25, 4TH P.M.  
 STATE OF MINNESOTA, County of KANABEC

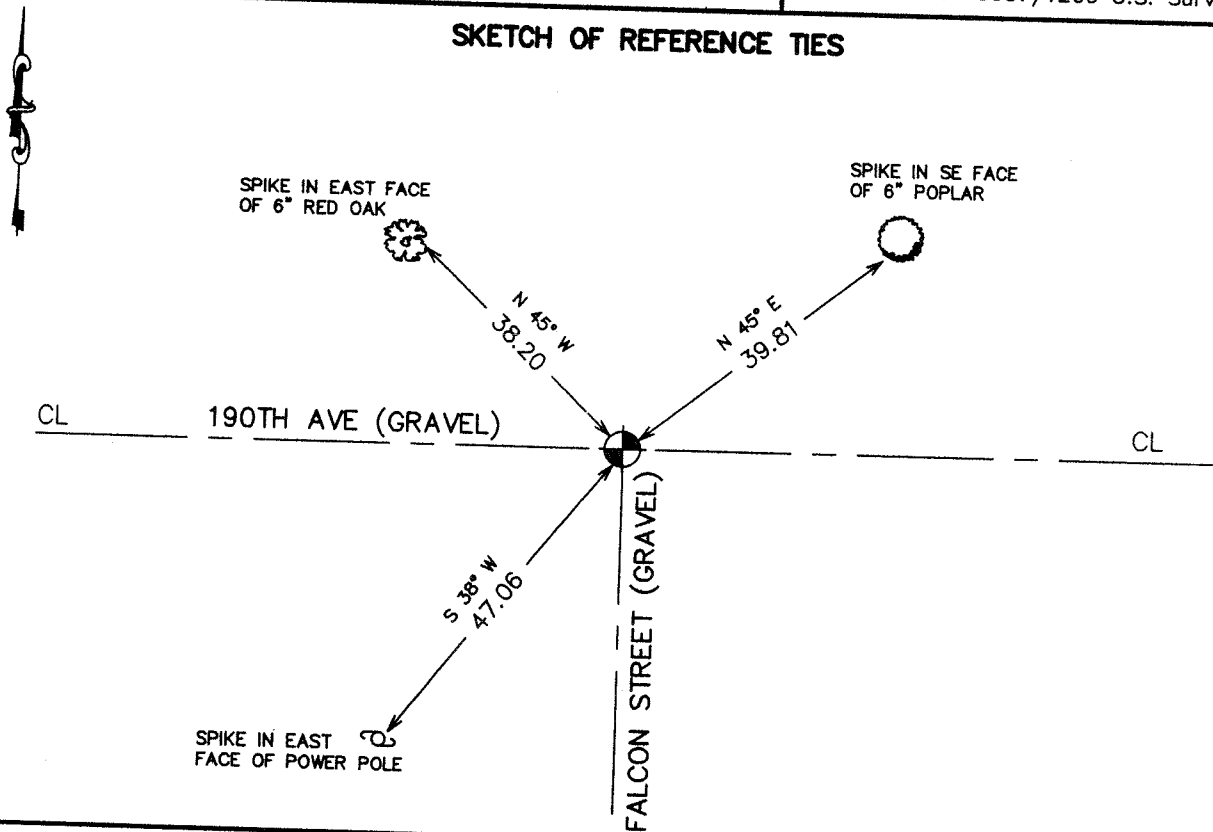
At the corner location shown on the sketch:  
 On 09/ /2004 Found a Kanabec County Monument.

Kanabec County U.S. Survey Feet Coordinates  
 NAD 1983, HARN 1996 Adjustment  
 Obtained by RTK GPS Observation

Northing= 148088.84  
 Easting= 369852.81

Note: NAD 1983, HARN 1996 Adjustment  
 coordinates are NOT compatible with  
 NAD 1983 coordinates  
 Note: 1 Meter=3937/1200 U.S. Survey Feet

## SKETCH OF REFERENCE TIES



Statement of evidence relative to this corner location is on back of page.

I hereby certify that this document and the data contained herein was prepared by me or under my direct supervision.

Ernest J. Reed 2-1-2005  
Signature Date

Registration No. 9808

Land Surveyor,  Professional Engineer

County Surveyor,  County Engineer

### OFFICE OF THE COUNTY RECORDER

County of \_\_\_\_\_

I hereby certify that this document was filed in the County Recorder's office at \_\_\_\_\_ M. on the \_\_\_\_\_ day of \_\_\_\_\_ A.D., 20\_\_\_\_

County Recorder \_\_\_\_\_

BY \_\_\_\_\_ Deputy

DOCUMENT NO. \_\_\_\_\_

STATEMENT OF EVIDENCE

*from tie sheet # 823 (1990)*

All of the original government bearing trees are now gone.

In 1937, Frank Turncliff found a sandstone and iron pin at this corner and filed a corner certificate.

In February of 1990, we made a survey along the north line of Sections 23 and 24 to locate existing monuments, lines of occupation and search areas.

We found a 1 1/4" iron pipe at the Northeast corner of Section 23 and accepted this as the corner that Turncliff had set.

We did not make an excavation to find Turncliff's sandstone.

In August 2004, we did a survey around Sections 11, 12, 13, and 14 to locate existing monumentation and tie in lines of occupation. We found the 1 1/4" pipe leaning to the north. We reset the pipe, took new ties, and established Kanabec County coordinates on this corner.