

CERTIFICATE OF LOCATION OF GOVERNMENT CORNER

EAST QUARTER Corner of Section 23, Township 39, Range 25, 4TH P.M.

STATE OF MINNESOTA, County of KANABEC

At the corner location shown on the sketch:
ON 1/26/2004, SET A #7 REBAR WITH AN ALUMINUM CAP.

Kanabec County U.S. Survey Feet Coordinates
NAD 1983, HARN 1996 Adjustment
Obtained by RTK GPS Observation

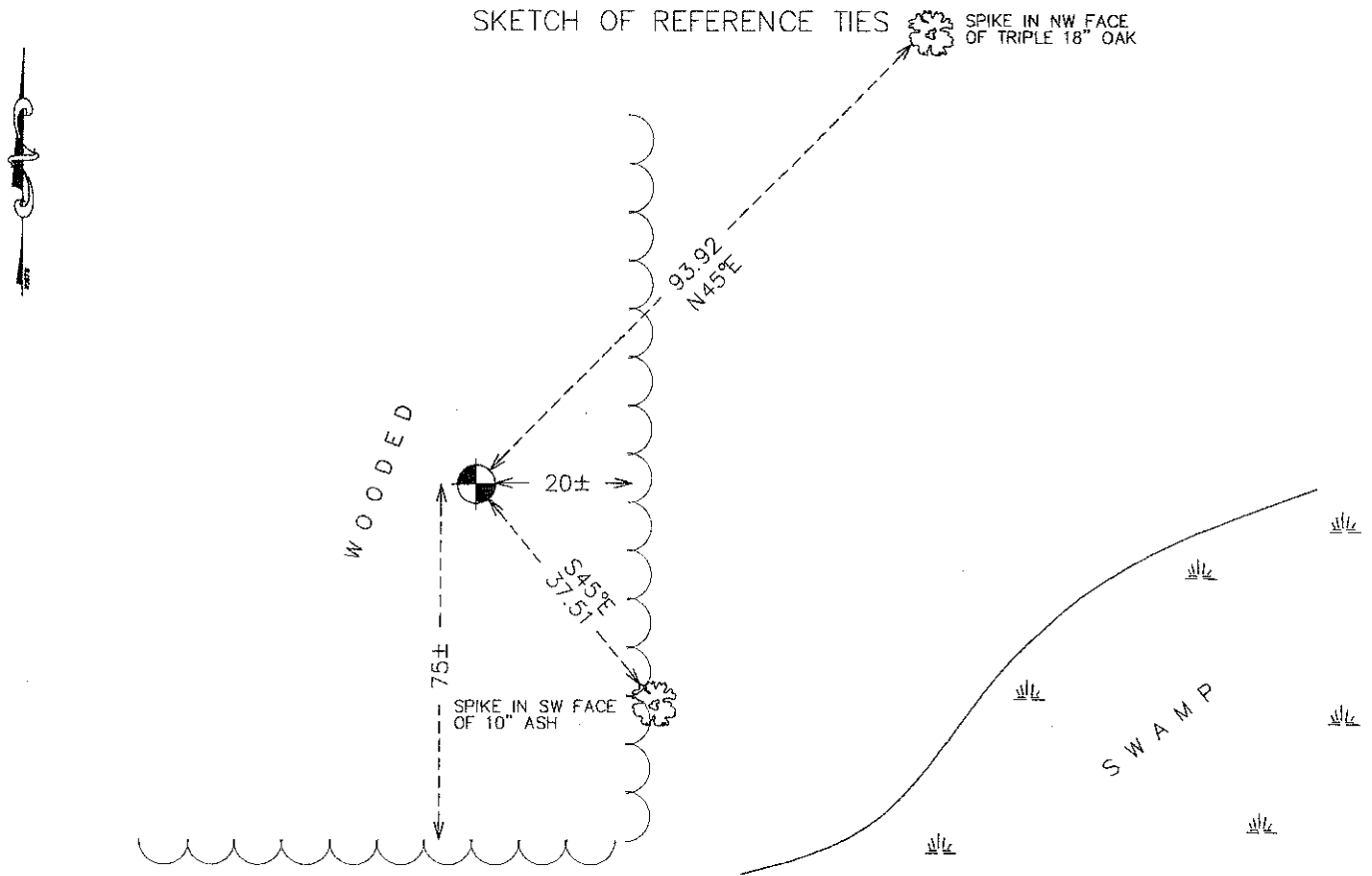
Northing= 145457.12

Easting= 369934.91

Note: NAD 1983, HARN 1996 Adjustment
coordinates are NOT compatible with
NAD 1983 coordinates

Note: 1 Meter=3937/1200 U.S. Survey Feet

SKETCH OF REFERENCE TIES



Statement of evidence relative to this corner location is on back of page.

I hereby certify that this document and the data contained herein was prepared by me or under my direct supervision.

Ernest Alud
Signature

12-21-2011
Date

Registration No. 9808

Land Surveyor, [] Professional Engineer

[] County Surveyor, [] County Engineer

OFFICE OF THE COUNTY RECORDER

County of _____

I hereby certify that this document was filed in the County Recorder's office at _____ M. on the

_____ day of _____ A.D., 20____

County Recorder _____

BY _____ Deputy

DOCUMENT NO. _____

E1/4 CORNER, SEC. 23, T39, R25

STATEMENT OF EVIDENCE

THE ORIGINAL CORNER WAS SET BY DEPUTY SURVEYOR SILAS BARNARD ON JUNE 22, 1855 AND 2 BEARING TREES NOTED AS:

**10" PINE @ 10 LINKS BEARING WEST
12" TAMARACK @ 16 LINKS BEARING N74°E**

NO VISIBLE EVIDENCE COULD BE FOUND FOR THE ORIGINAL CORNER OR BEARING TREES.

NO SUBSEQUENT SURVEYS COULD BE FOUND AT THE KANABEC COUNTY OFFICES FOR THIS CORNER.

THERE IS A ROAD OPENING ON FILE AT THE COUNTY AUDITOR'S OFFICE DATED SEPTEMBER 30, 1922, BUT NO SURVEY WAS ATTACHED. THERE IS NO SIGN THAT THIS ROAD WAS EVER CONSTRUCTED.

ON JANUARY 19, 2004, IN DOING A SURVEY IN SEC. 24, E.G. RUD AND SONS SET A #7 REBAR WITH AN ALUMINUM CAP EQUIDISTANT BETWEEN THE NE AND SE CORNERS OF SEC. 23 AND IN LINE WITH AN ESTABLISHED OCCUPATION LINE TO THE NORTH. TIES WERE TAKEN AND KANABEC COUNTY COORDINATES WERE ESTABLISHED ON THIS POSITION.