

CERTIFICATE OF LOCATION OF GOVERNMENT CORNER

NORTH QUARTER Corner of Section 25, Township 39, Range 25, 4TH P.M.

STATE OF MINNESOTA, County of KANABEC

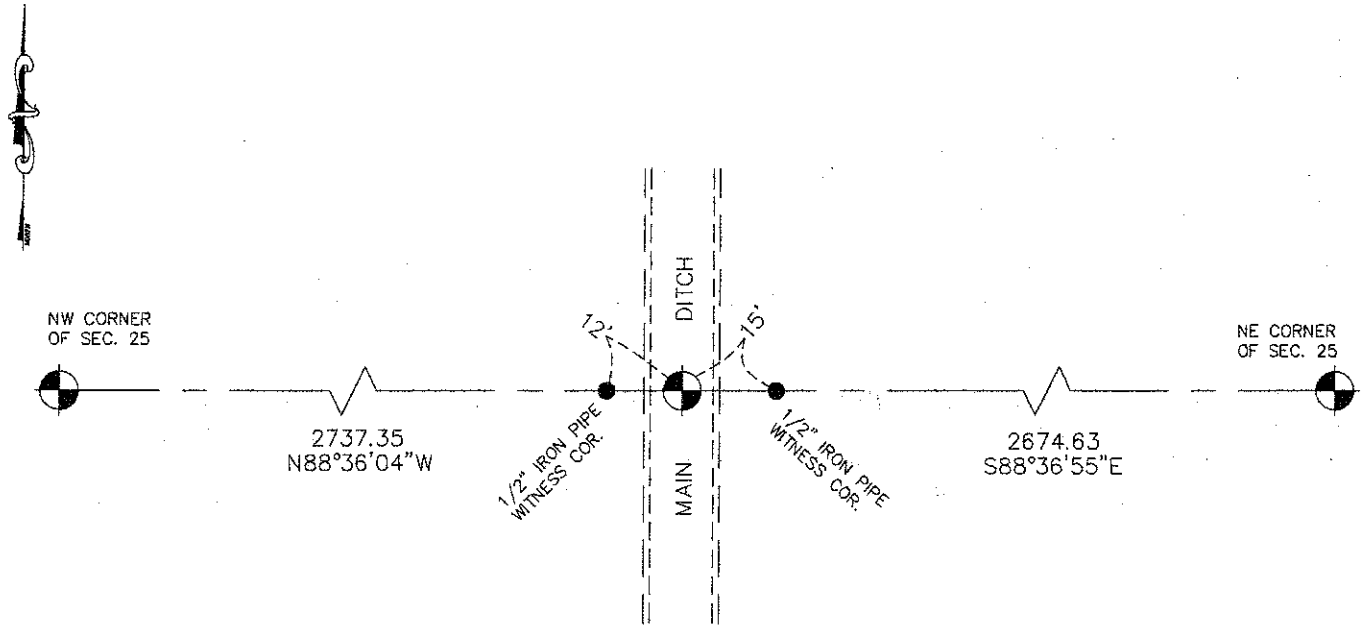
At the corner location shown on the sketch:
 SET A 1/2" DIA. BY 4' LONG IRON PIPE IN CENTERLINE OF DITCH

Kanabec County U.S. Survey Feet Coordinates
 NAD 1983, HARN 1996 Adjustment
 Obtained by RTK GPS Observation

Northing= 142756.11
 Easting= 372654.52

Note: NAD 1983, HARN 1996 Adjustment
 coordinates are NOT compatible with
 NAD 1983 coordinates
 Note: 1 Meter=3937/1200 U.S. Survey Feet

SKETCH OF REFERENCE TIES



Statement of evidence relative to this corner location is on back of page.

I hereby certify that this document and the data contained herein was prepared by me or under my direct supervision.

Ernest Rud 7-18-2011
 Signature Date

Registration No. 9808

- Land Surveyor, Professional Engineer
 County Surveyor, County Engineer

OFFICE OF THE COUNTY RECORDER

County of _____

I hereby certify that this document was filed in the County Recorder's office at _____ M. on the

_____ day of _____ A.D., 20__

County Recorder _____

BY _____ Deputy

DOCUMENT NO. _____

N1/4 CORNER, SEC. 25, T39, R25

STATEMENT OF EVIDENCE

THE ORIGINAL GOVERNMENT POST WAS SET BY DEPUTY SURVEYOR SILAS BARNARD ON JUNE 21, 1855 AND 2 BEARING TREES NOTED AS:

12" PINE @ 625 LINKS BEARING S42°E

10" WHITE BIRCH @ 20 LINKS BEARING N24°E

NO VISIBLE EVIDENCE REMAINS FOR THE CORNER OR BEARING TREES TODAY.

NO RECORDS OF ANY SUBSEQUENT SURVEYS COULD BE FOUND AT THE KANABEC COUNTY OFFICES.

ON THE DITCH MAP FOR COUNTY DITCH NO. 11 DATED MAY 10, 1917, ON FILE AT THE KANABEC COUNTY ENGINEER'S OFFICE SHOWS THAT THE MAIN DITCH "A" TO BE ON THE NORTH-SOUTH CENTERLINE OF SEC. 24 AND 25.

ON JAN. 7, 2004 E.G. RUD AND SONS, INC. RAN A SURVEY AROUND SEC, 24, 25 AND 26. ADJACENT PROPERTY OWNERS HAD ALWAYS ASSUMED THE DITCH TO BE THE PROPERTY LINE.

THEREFORE WE SET A 1/2" IRON PIPE 4' LONG, ON LINE BETWEEN THE NW AND NE CORNERS OF SEC. 25, IN THE CENTERLINE OF THE DITCH WITH WITNESS CORNERS EAST AND WEST OF THE MONUMENT. THIS WAS CONSIDERED TO BE THE BEST EVIDENCE BASED ON THE LOCATION OF THE DITCH AND THE TESTIMONY OF ADJOINING PROPERTY OWNERS.