

CERTIFICATE OF LOCATION OF GOVERNMENT CORNER

NORTH QUARTER Corner of Section 36, Township 39, Range 25, 4TH P.M.

STATE OF MINNESOTA, County of KANABEC

At the corner location shown on the sketch:

FOUND THIS MONUMENT
AND ESTABLISHED KANABEC COUNTY COORDINATES ON ITS LOCATION.

Kanabec County U.S. Survey Feet Coordinates
NAD 1983, HARN 1996 Adjustment
Obtained by RTK GPS Observation

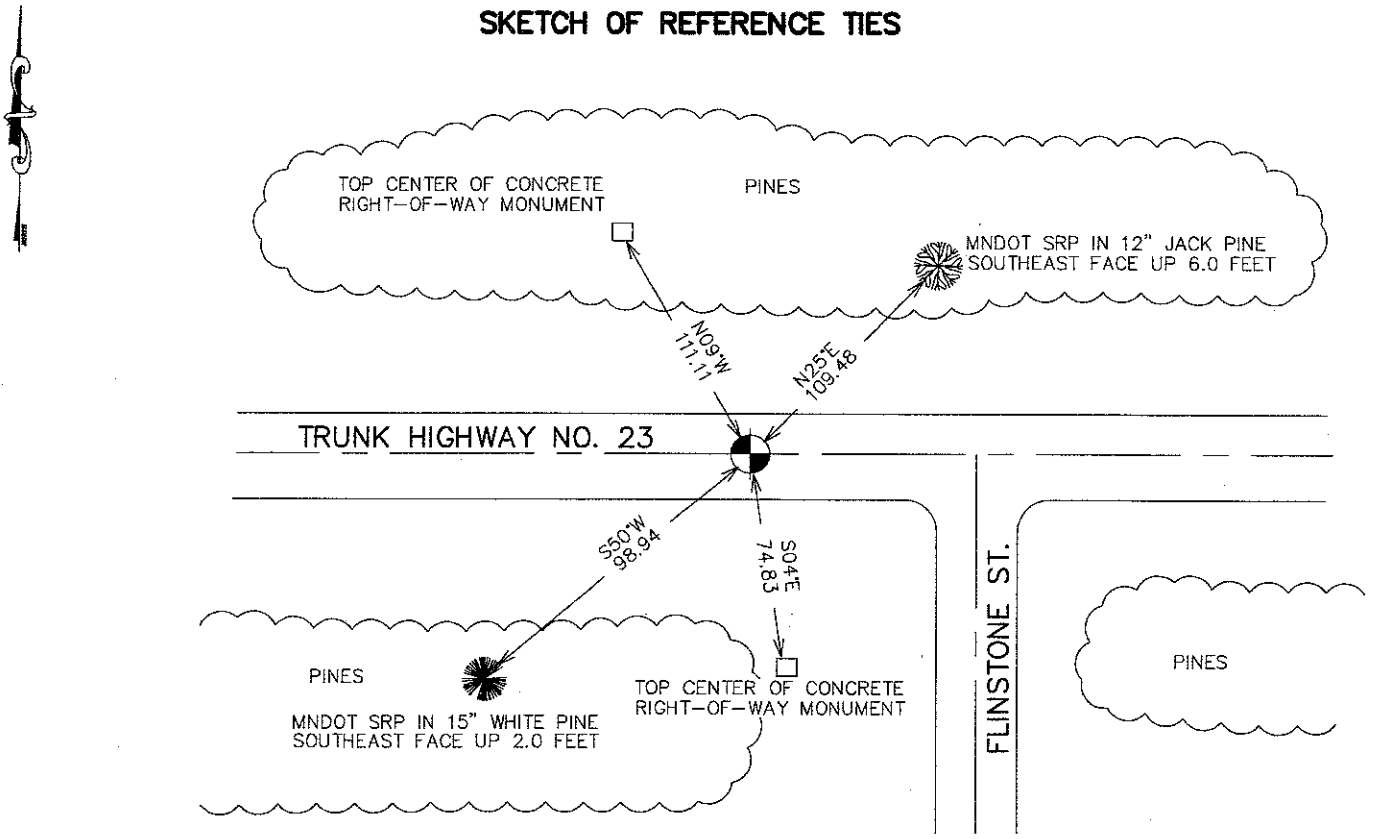
Northing= 137453.36

Easting= 372636.50

Note: NAD 1983, HARN 1996 Adjustment
coordinates are NOT compatible with
NAD 1983 coordinates

Note: 1 Meter=3937/1200 U.S. Survey Feet

SKETCH OF REFERENCE TIES



Statement of evidence relative to this corner location is on back of page.

I hereby certify that this document and the data contained herein was prepared by me or under my direct supervision.

Ernest Blud
Signature

11-25-07
Date

OFFICE OF THE COUNTY RECORDER

County of _____

I hereby certify that this document was filed in the County Recorder's office at _____ M. on the _____ day of _____ A.D., 20____

County Recorder _____

BY _____ Deputy

DOCUMENT NO. _____

Registration No. 9808

Land Surveyor, Professional Engineer

County Surveyor, County Engineer

NORTH QUARTER CORNER SECTION 36, T39, R25

STATEMENT OF EVIDENCE

THE ORIGINAL PUBLIC LAND SURVEY WAS RUN IN 1855 BY MR S. BARNARD, DEPUTY SURVEYOR, AND A WOOD POST WAS SET TO MARK THE CORNER. BEARING TIES WERE MADE TO A SUGAR MAPLE AND A PINE.

IN 1901, FORMER COUNTY SURVEYOR, JOHN NELSON MADE A TOWNSHIP ROAD ORDER SURVEY IN SECTION 35, T.39, R.25, IN WHICH HE LOCATED AND ESTABLISHED CORNERS. A PINE STUMP WAS USED AS A REFERENCE TIE. RECORDED IN ROAD RECORD BOOK NUMBER 2, PAGE 10.

IN 1943, THE MINNESOTA DEPARTMENT OF TRANSPORTATION SHOWS THE CORNER AT P.O.T. 715+65.9, "ASSUMED CORNER" AT INTERSECTIONS OF CENTERLINE TRUNK HIGHWAY 23 AND A FENCE SOUTH, IN BOOK NO. 6 OF ALIGNMENT FOR S.P. 3301-02 TH23 "LW" LINE FROM STATION 683+03.8 TO STATION 1014+11.2.

IN 1950, THE MINNESOTA DEPARTMENT OF TRANSPORTATION, ON RIGHT-OF-WAY MAP FOR S.P. 3301, INDEX FILE NO. 13-30, SHOWS THE CORNER AT P.O.T. 715+65.9, AT INTERSECTION OF ROADS EAST AND WEST AND FENCE SOUTH.

IN 1999-2002, THE MINNESOTA DEPARTMENT OF TRANSPORTATION MADE A SURVEY AROUND SECTION 36 TO LOCATE THE EXISTING MONUMENTS, LINES OF OCCUPATION, AND SEARCH AREAS. THIS CORNER FALLS ON THE CENTERLINE OF T.H. 23.

IN JANUARY, 2002, THE CORNER LOCATION WAS DETERMINED USING FOUND ALIGNMENT MONUMENTS AS SHOWN ON THE MINNESOTA DEPARTMENT OF TRANSPORTATION RIGHT-OF-WAY MAP FOR S.P. 3301, T.H. 23, INDEX FILE NO. 13-30. A 3/4" X 24" IRON PIN WAS SET FLUSH WITH THE ROAD, TO MARK THE CORNER. NEW REFERENCE TIES WERE MADE TO TWO PINE TREES AND TWO CONCRETE RIGHT OF WAY MONUMENTS. THE MINNESOTA DEPARTMENT OF TRANSPORTATION ACCEPTS THIS POSITION AS THE CORRECT LOCATION FOR THE CORNER.

FOR DETAILS AND SURVEY ANALYSIS, CONTACT THE MINNESOTA DEPARTMENT OF TRANSPORTATION DISTRICT SURVEYS OFFICE IN BAXTER, MINNESOTA.

IN 2006 E.G. RUD AND SONS ESTABLISHED KANABEC COUNTY COORDINATES ON THIS CORNER.