

# CERTIFICATE OF LOCATION OF GOVERNMENT CORNER

SOUTHEAST CORNER, Section 26, Township 39 North, Range 25 West.  
4th Principal Meridian, Kanabec County, Minnesota

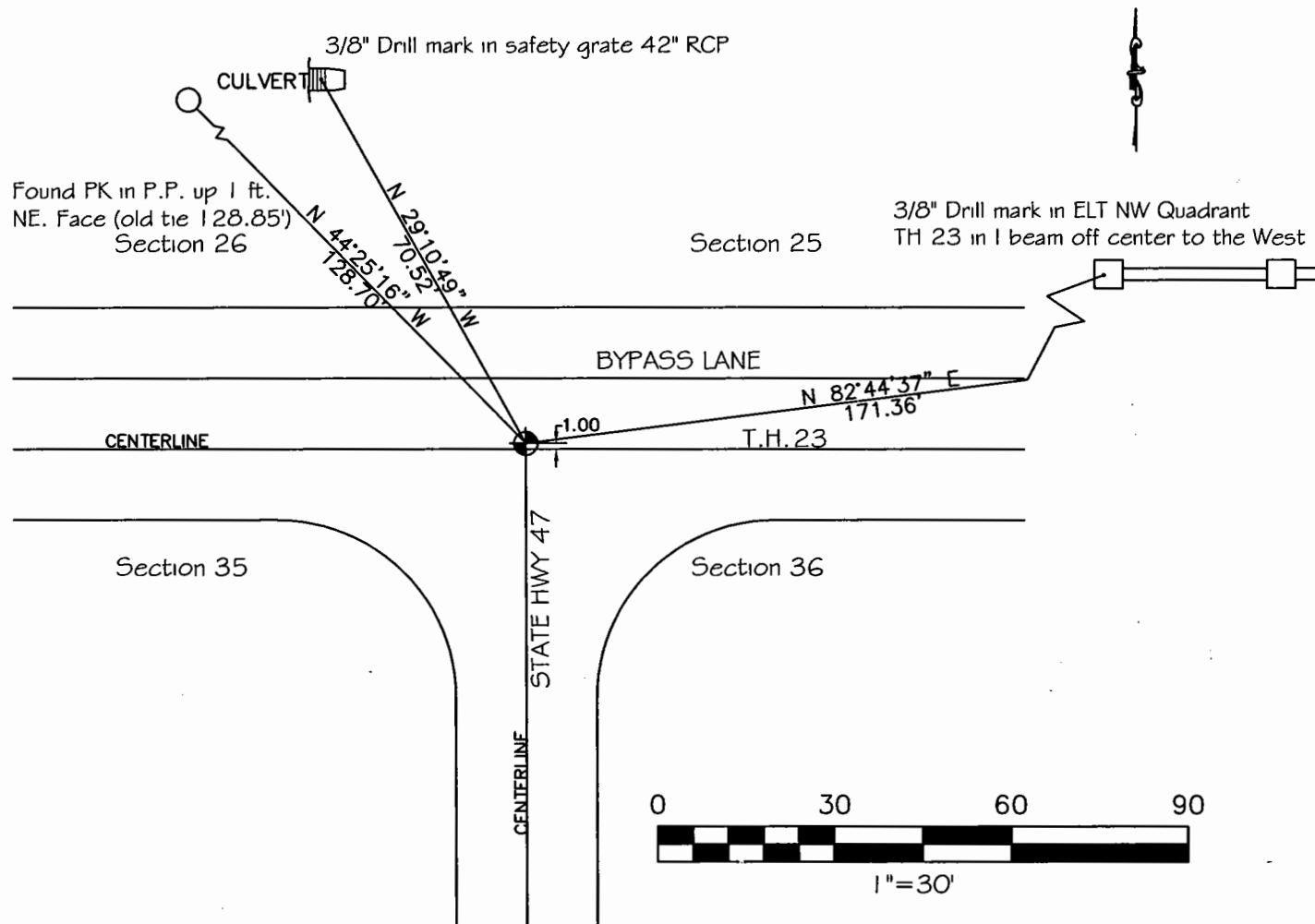
1/4/2022 Set a 5/8" by 12" rebar and orange plastic cap "Hancock #57887".

Kanabec County U.S. Survey Feet Coordinates  
NAD 1983, HARN 1996 Adjustment Obtained by Trimble R6 RTK GPS with VRS 3 minute static observation.

Northing: **137556.23**

Easting: **369948.42**

Reference previous Certificate of Location of Government Corner # 3925050 on file in the County Recorders office relative to this corner.



I hereby certify that this survey, plan or report was prepared by me or under my direct supervision, that the United States public land survey monument record is correct and complete to the best of my knowledge and belief and that I am a duly Licensed Land Surveyor under the laws of the state of Minnesota

Alan Hancock  
Minnesota License No. 57887

12/21/2022  
Date

### OFFICE OF THE COUNTY RECORDER

County of Kanabec I hereby certify that this document was filed in the County Recorder's office at \_\_\_\_\_m \_\_\_\_\_ on the \_\_\_\_\_ day of \_\_\_\_\_ A.D. 20\_\_\_\_ County Recorder

By \_\_\_\_\_  
Document NO. \_\_\_\_\_

**Southeast Corner Section 26, T39N, R25W, 4<sup>th</sup> P.M.** Statement of Evidence: Northeast Corner of Section 35, Township 39 North, Range 25 West, 4<sup>th</sup> Principal Meridian, Kanabec County, Minnesota.

The Original Public Land Survey was run in 1849, and a wood post was set to mark the corner. Bearing tree ties were made to four pines. All Bearing trees are now gone.

In 1900, Thomas Vickory made a survey along the North and East lines of Section 35, but does not state what was found or set. Recorded in Surveyor's Record Book A, Page 236.

In 1901, the former Country Surveyor, John Nelson, made a Township Road Order Survey along the North line of the Northeast quarter, and placed a stone with a "+" cut in it, recorded in Road Record No 2, Page 10.

In 1934, The Minnesota Department of Transportation shows the corner at 379+21.4, assumed corner, at 9.1 feet right of intersection of the centerline South road and fence line North and centerline of East and West road, T.H. 23, in Book No. 24, Page 231, of alignment for S.P. 56-110 Ogilvie, Minn. "L2" line from station 0+00 to station 413+10.6.

In 1943, The Minnesota Department of Transportation shows the corner at P.I. 688+75.5, assumed corner, at intersections of T.H. 56 and T.H. 23, in Book No. 6 of alignment for S.P. 3301-02 TH 23 "Lw" line from station 683+03.8 to station 1014+11.2.

In 1950, The Minnesota Department of Transportation, on Right of Way Map for S.P. 3301, Index file No. 13-30, shows the corner at P.I. 688+75.5, at intersection of roads East, West and South.

In 1951, The Minnesota Department of Transportation, on Right of Way Map for S.P. 3301, Index file no. 13-62, shows the corner at P.I. 688+75.5, at intersection of roads East, West and South.

On July 5, 1989, Mr. M.B. Rude, Kanabec County Surveyor, license no. 8195, found a 3/4" iron pin at the centerline intersection PI and accepted this as the perpetuated corner location and pulled new ties to maintain this corner location. A new certificate was filed at the Kanabec County Recorder's Office.

On July 31, 1989, Mr. M.B. Rude, Land Surveyor License No. 8195, shows, on a Certificate of Survey for the Kanabec County Highway Department, an iron pin for the corner.

On Jan 17, 1999, The Minnesota Department of Transportation recovered a 3/4 inch iron pin down 0.6 feet, 1.0 foot North of the centerline of Minnesota Trunk Highway number 23. They also found the existing reference ties. New Bearing ties were taken to 3 pine trees and a power pole. The Minnesota Department of Transportation accepts this position as the correct location for this corner.

2003 MN Dot recorded a Right of Way plat# 33-05. Map states 3/4" Iron Pipe, which is likely the Iron Pin. For details and survey analysis, contact the Minnesota Department of Transportation District Surveys Office in Baxter, Minnesota.

**Ernest G. Rud #9808** In June 2003 ran a survey around Sections 25 and 26 and found this monument. We established Kanabec County Coordinates using GPS equipment.

**Alan Hancock #57887.** In Dec. 2021, I performed a survey for Cole Newman in Section 26: While inputting known county coordinates, I noticed cert # 3925050 of Rud, had the coordinates incorrect in that it looked a mile east, likely for the Southeast Corner of Section 25 of above-named Township. I contacted the County Surveyor, Tyler Kroschel #44490. He provided me with the coordinates from an AutoCAD drawing that he had in his records. When I did a field search, the monument was gone, likely torn out on a mill or reclamation of TH 23 or the recently constructed bypass lane. The three tie trees, were all removed. The PK in the PP was found. The provided coordinates, matched the CL, CL 1 foot North, as indicated above. It measured close to the PP tie, but off a little, it looked like the pole has leaned some. On Jan 4<sup>th</sup>, 2020, I set a 5/8" by 12" rebar with plastic cap, down 0.15'. I made new ties. Said corner was set by given coordinates and verified by lone remaining PP tie. **It is my conclusion that the set 5/8" plastic capped rebar set by myself, off the given coordinates is the best available evidence of the original PLSS corner monument location.**