

# CERTIFICATE OF LOCATION OF GOVERNMENT CORNER

EAST QUARTER Corner of Section 35, Township 39, Range 25, 4TH P.M.

STATE OF MINNESOTA, County of KANABEC

At the corner location shown on the sketch:

FOUND THIS MONUMENT  
AND ESTABLISHED G.P.S. COORDINATES ON ITS LOCATION.

Kanabec County U.S. Survey Feet Coordinates  
NAD 1983, HARN 1996 Adjustment  
Obtained by RTK GPS Observation

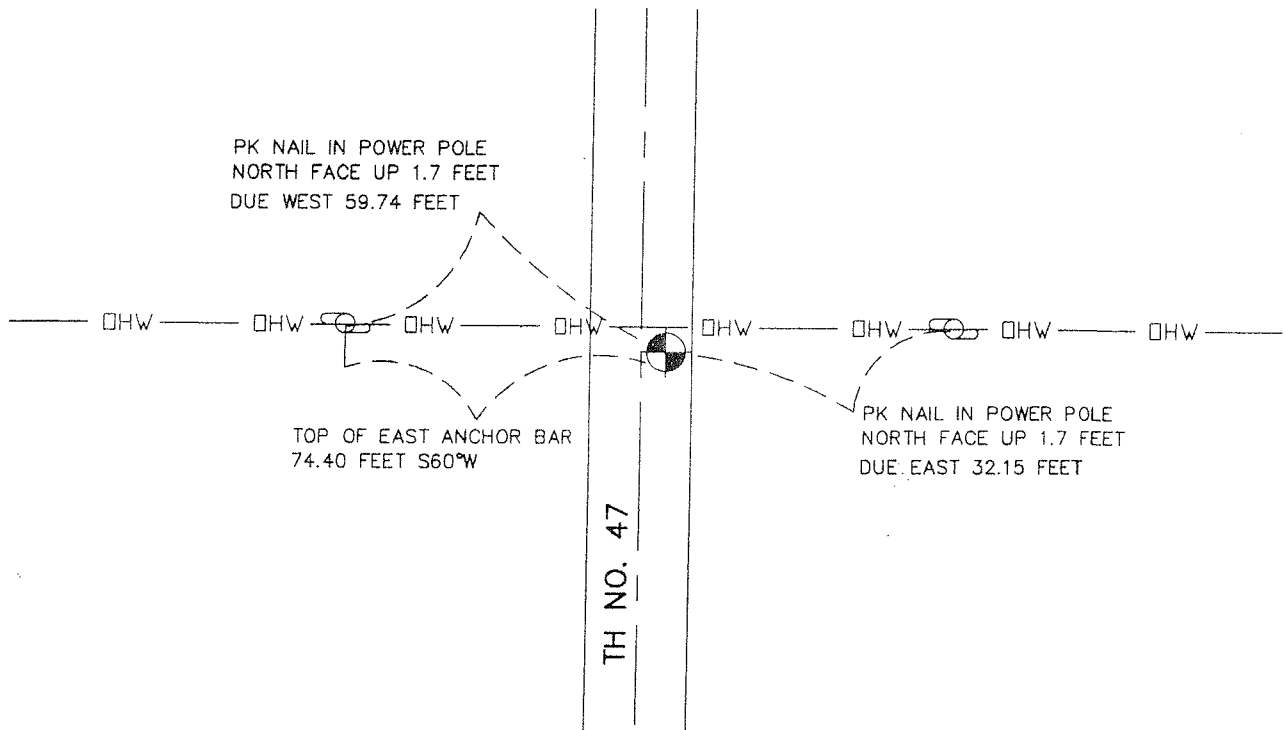
Northing= 134977.82

Easting= 369982.83

Note: NAD 1983, HARN 1996 Adjustment  
coordinates are NOT compatible with  
NAD 1983 coordinates

Note: 1 Meter=3937/1200 U.S. Survey Feet

## SKETCH OF REFERENCE TIES



NOTE: MONUMENT IS 3.0 FEET ±  
SOUTH OF POWER LINE AND 7.0 FEET±  
EAST OF TH NO. 47 CENTERLINE

Statement of evidence relative to this corner location is on back of page.

I hereby certify that this document and the data  
contained herein was prepared by me or under  
my direct supervision.

*Ernest J. Rud*  
Signature

1-24-2007  
Date

Registration No. Minn No. 9808

Land Surveyor,  Professional Engineer

County Surveyor,  County Engineer

## OFFICE OF THE COUNTY RECORDER

County of \_\_\_\_\_

I hereby certify that this document was filed in  
the County Recorder's office at \_\_\_\_\_ M. on the

\_\_\_\_\_ day of \_\_\_\_\_ A.D., 20\_\_\_\_

County Recorder \_\_\_\_\_

BY \_\_\_\_\_ Deputy

DOCUMENT NO. \_\_\_\_\_

## EAST QUARTER CORNER SECTION 35, T39, R25

### STATEMENT OF EVIDENCE

The original public land survey was run in 1855 by Mr. S. Barnard, Deputy Surveyor, and a wood post was set to mark the corner. Bearing ties were made to two pines. All of the original bearing trees are now gone.

In 1900, Thomas Vickery made a survey along the East line of Section 35, but he does not state what was found or set.

In 1934, The Minnesota Department of Transportation shows an assumed corner, 3.8 feet right at station 353+42.0 on "L2-Line" at intersection of the centerline of a North and South road and East and West fence lines. In Book No. 24, Page 231, of alignment for S.P. 56-110 Ogilvie, Minn. from station 0+00 to station 413+ 10.6. Does not say what was found or set.

State Highway Number 47 is presently (August 1989) running North and South at this location, with the intersection of a fence line East and West.

On July 27, 1989, Mr. M.B. Rude, Land Surveyor License no. 8195, found a 1/2" iron pipe with a plastic cap marked R.L.S. no. 10918 This location fits a proportional line and split between the Northeast and Southeast Corners of Section 35. No excavation for additional evidence was made at this time, because the State Department of Transportation records show there wasn't any monumentation at this corner in 1934. New reference ties were made, and a certificate was filed at the Kanabec County Recorders Office.

On July 31, 1989, Mr. M.B. Rude, Land Surveyor License no. 8195, shows, on a Certificate of Survey for the Kanabec County Highway Department, a found iron pipe or pin at the location.

In January, 2002, The Minnesota Department of Transportation recovered an iron pipe with no cap. Also found reference ties as shown by Mr. Rude's certificate. New Bearing ties were made to the existing ties and 1 new power pole anchor. The Minnesota Department of Transportation accepts this position as the correct location for the corner.

For details and survey analysis, contact the Minnesota Department of Transportation District Surveys Office in Baxter, Minnesota.

In May 2005 E.G. Rud established Kanabec County coordinates on this monument using G.P.S. equipment.