

# CERTIFICATE OF LOCATION OF GOVERNMENT CORNER

NORTHEAST Corner of Section 3, Township 38, Range 25, 4TH P.M.  
~~SE~~ 34 39 25  
 STATE OF MINNESOTA, County of KANABEC

At the corner location shown on the sketch:  
 FOUND THIS MONUMENT  
 AND ESTABLISHED G.P.S. COORDINATES ON ITS LOCATION.

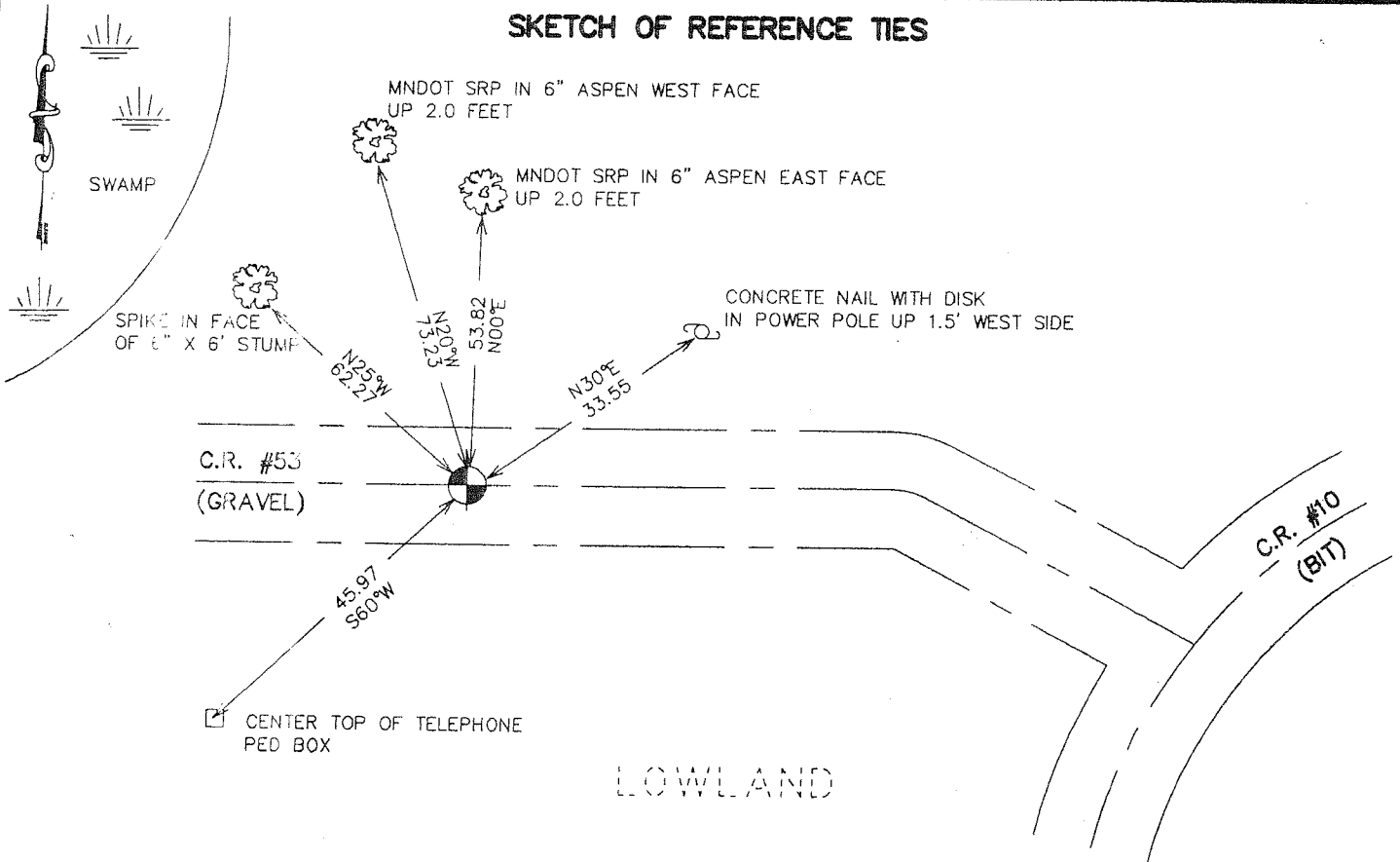
Kanabec County U.S. Survey Feet Coordinates  
 NAD 1983, HARN 1996 Adjustment  
 Obtained by RTK GPS Observation

Northing= 132697.10  
 Easting= 364693.98

Note: NAD 1983, HARN 1996 Adjustment  
 coordinates are NOT compatible with  
 NAD 1983 coordinates

Note: 1 Meter=3937/1200 U.S. Survey Feet

## SKETCH OF REFERENCE TIES



Statement of evidence relative to this corner location is on back of page.

I hereby certify that this document and the data contained herein was prepared by me or under my direct supervision.

Ernest Fred 1-24-2007  
 Signature Date

Registration No. Minn No 9808

Land Surveyor,  Professional Engineer  
 County Surveyor,  County Engineer

## OFFICE OF THE COUNTY RECORDER

County of \_\_\_\_\_

I hereby certify that this document was filed in the County Recorder's office at \_\_\_\_\_ M. on the \_\_\_\_\_ day of \_\_\_\_\_ A.D., 20\_\_\_\_

County Recorder \_\_\_\_\_  
 BY \_\_\_\_\_ Deputy

DOCUMENT NO. \_\_\_\_\_

# NORTHEAST CORNER SECTIONS 3, T38, R25

## STATEMENT OF EVIDENCE

The original public land survey was run in 1851 by Mr. D. Higbee, Deputy Surveyor, and a wood post was set to mark the corner. Bearing ties were made to three tamaracks and one pine.

In 1901, former County Surveyor, John Nelson, made a Township Road Order survey in Section 35, 1. 39 N., R 25. W., in which he located and established corners on the South Town Line.

The Southeast Corner of Section 34, 1. 39, R. 25, a 30-inch x 24 inch stone, and a pine stump were used as reference ties, recorded in Road Record Book Number 2, Page 10.

In 1902, former County Surveyor, John Nelson, made a survey for Ernest Steffens in Section 2, T38, R.25., recorded in County Surveyor's Record Book 2, Page 8. In the survey, Mr. Nelson placed the West Quarter of Section 2, recorded in County Surveyor's Record Book 2, Page 8.

In 1925, Mr. George Jinks, Kanabec County Surveyor, placed a stone with a "+" cut in it at this corner, to replace the found wooden stake. Mr. Jinks took two new bearing ties to poplars.

A certificate was filed at the Kanabec County Recorder's Office

In 1934, The Minnesota Department of Transportation shows an assumed corner at intersection of centerline of an east and west road and centerline of road south, in Book No. 24, Page 233 of alignment for S.P. 56-110 Ogilvie, Minn. "L-Lines" from station 327+60 to station 413+10.6.

In July of 1989, Mr. M.B. Rude, Kanabec County Surveyor, made a survey around Section 3 to locate the existing monuments, lines of occupation, and search areas. This corner falls in the intersection of roads, East, West and South.

On July 19, 1989, Mr. M.B. Rude made a 15 x 15 x 3 foot deep excavation with the backhoe and found a 12 inch by 12 inch hard stone with a "+" cut in it. The found stone was replaced with a 7/8 inch by 24 inch capped rebar and new ties were established to 2 power poles, 1 poplar, and the centerlines of County Highways No. 53 and 10. A new certificate was filed at the Kanabec County Recorder's Office.

On July 31, 1989, Mr. M.B. Rude, Land Surveyor License no. 8195, shows, on a Certificate of Survey for the Kanabec County Highway Department, a Kanabec County Land Corner at the location.

In 1993, Mr. Gregory A. Nikodyn, Kanabec County Engineer, found a 7/8 inch by 24 inch capped rebar and 1 reference tie. New reference ties were established to 1 power pole, 1 poplar, 2 iron rebars, and the centerlines of County Highways number 53 and 10. A new Certificate was filed at the Kanabec County Recorder's Office.

In 1995, Mr. Gregory A. Nikodyn, Kanabec County Engineer, found a 7/8 inch by 24 inch capped rebar and 3 reference ties. A new certificate was filed at the Kanabec County Recorder's Office.

In January of 2002, the Minnesota Department of Transportation recovered a 7/8" by 24" capped rebar, down 1.2 feet. Also found 1 reference tie as shown by Mr. Nikodyn's certificate. New bearing ties were made to a power pole, two aspens, one stump, and the center of a telephone pedestal. the Minnesota Department of Transportation accepts this position as the correct location for the corner.

For details and survey analysis, contact the Minnesota Department of Transportation District Surveys office in Baxter, Minnesot.

In July of 2006 E.G. Rud and Sons established Kanabec County Coordinates on this monument using G.P.S. equipment.