

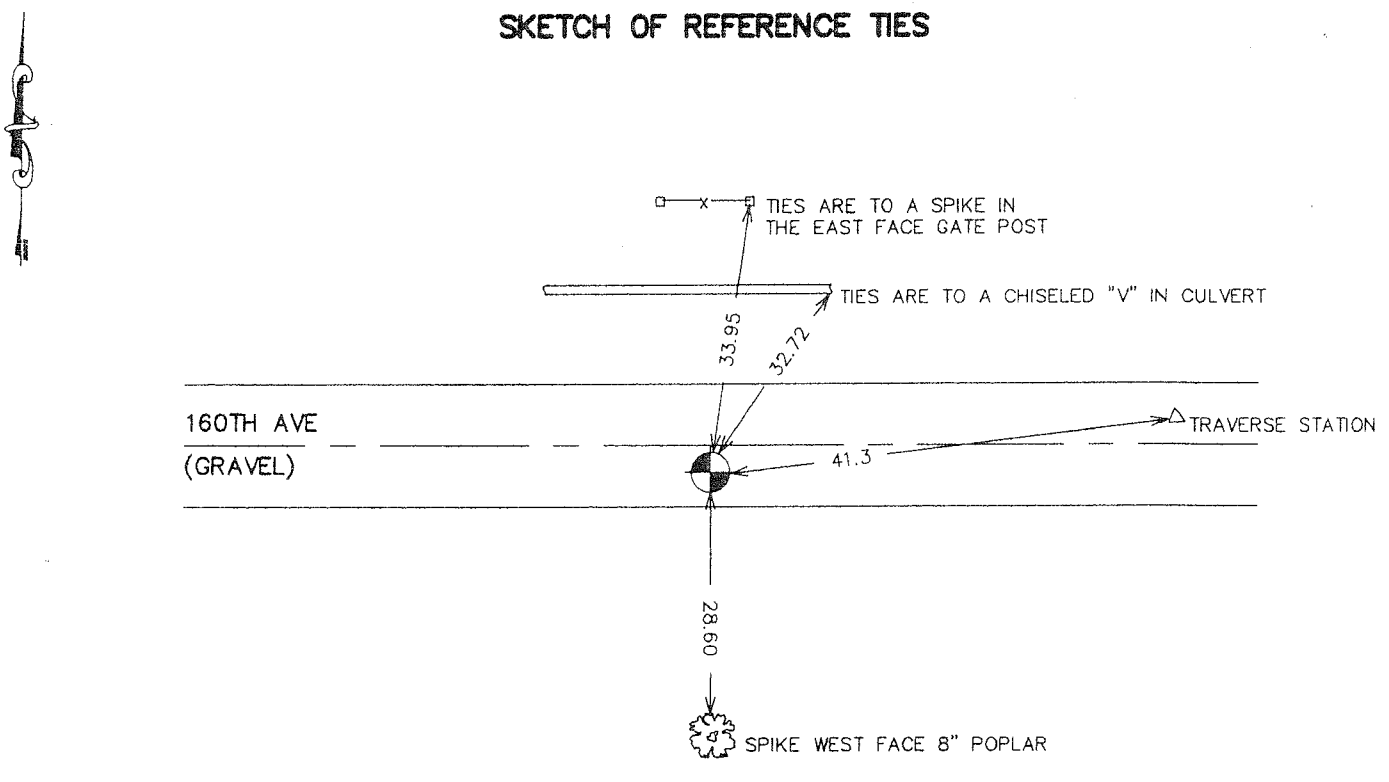
CERTIFICATE OF LOCATION OF GOVERNMENT CORNER

SOUTH QUARTER Corner of Section 34, Township 39, Range 25, 4TH P.M.
 STATE OF MINNESOTA, County of KANABEC

At the corner location shown on the sketch:
 FOUND THIS MONUMENT
 AND ESTABLISHED G.P.S. COORDINATES ON ITS LOCATION.

Kanabec County U.S. Survey Feet Coordinates
 NAD 1983, HARN 1996 Adjustment
 Obtained by RTK GPS Observation
 Northing= 132844.66
 Easting= 362033.66
 Note: NAD 1983, HARN 1996 Adjustment
 coordinates are NOT compatible with
 NAD 1983 coordinates
 Note: 1 Meter=3937/1200 U.S. Survey Feet

SKETCH OF REFERENCE TIES



Statement of evidence relative to this corner location is on back of page.

I hereby certify that this document and the data contained herein was prepared by me or under my direct supervision.

Ernst Nord 1-24-2007
 Signature Date

Registration No. Minnesota No 9808

- Land Surveyor, Professional Engineer
 County Surveyor, County Engineer

OFFICE OF THE COUNTY RECORDER

County of _____

I hereby certify that this document was filed in the County Recorder's office at _____ M. on the _____ day of _____ A.D., 20 _____

County Recorder _____

BY _____ Deputy

DOCUMENT NO. _____

SOUTH QUARTER CORNER SECTIONS 34, T39, R25

STATEMENT OF EVIDENCE

ORIGINAL SURVEY WAS SET BY SILAS BERNARD IN JUNE OF 1855. BEARING TREES NO LONGER REMAIN.

NO RECORD OF A SURVEY ALONG THIS LINE AT KANABEC COUNTY OFFICE.

IN OCTOBER 2002 WE MADE A SURVEY OF SECTION 34, 35, AND PARTS OF 33. WE MEASURED FROM SOUTHWEST TO SOUTHEAST CORNER AND FOUND A 47 FOOT SURPLUS WHICH WAS CONSISTENT WITH SOUTH LINE OF 33 HAVING A 46 FOOT SURPLUS, SECTION 35 HAVING A 51 FOOT SURPLUS. WE SET A POINT ON LINE AND EQUIDISTANT BETWEEN SOUTHWEST CORNER AND SOUTHEAST CORNER.

ON OCTOBER 24, 2002 WE EXCAVATED AT THIS LOCATION AND AT A DEPTH OF 18" WE FOUND A GREEN STONE WITH A CHISELED X ON TOP. THIS WAS APPROXIMATELY 3 FEET SOUTH OF OUR LOCATION. WE SET A KANABEC COUNTY MONUMENT IN PLACE OF THE STONE AND TOOK TIES.

IN JULY 2006 E.G. RUD AND SONS ESTABLISHED KANABEC COUNTY COORDINATES USING G.P.S. EQUIPMENT.