

# CERTIFICATE OF LOCATION OF GOVERNMENT CORNER

SOUTHWEST Corner of Section 34, Township 39, Range 25, 4TH P.M.

STATE OF MINNESOTA, County of KANABEC

At the corner location shown on the sketch:  
FOUND THIS MONUMENT  
AND ESTABLISHED G.P.S. COORDINATES ON ITS LOCATION.

Kanabec County U.S. Survey Feet Coordinates  
NAD 1983, HARN 1996 Adjustment  
Obtained by RTK GPS Observation

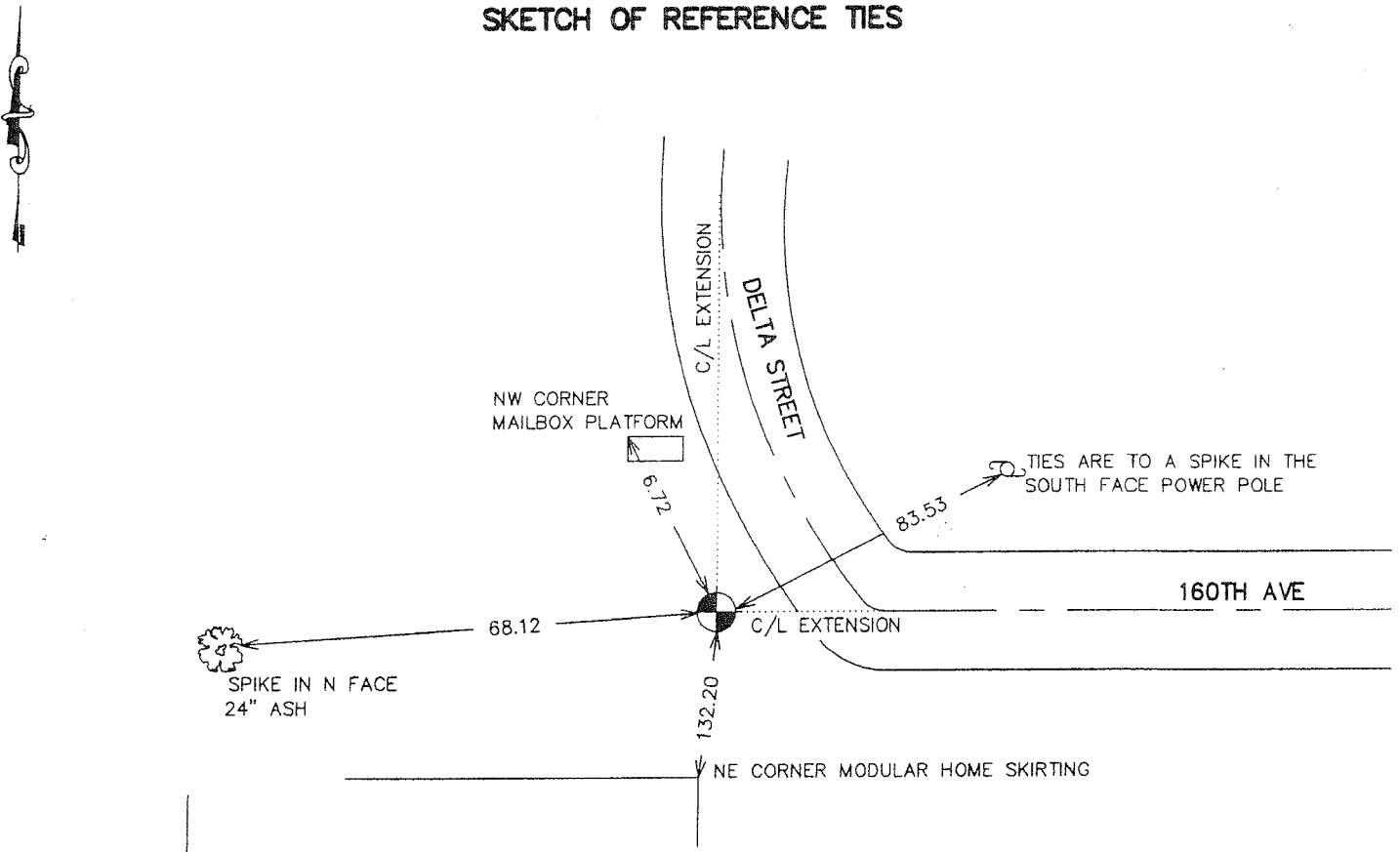
Northing= 132997.67

Easting= 359374.45

Note: NAD 1983, HARN 1996 Adjustment  
coordinates are NOT compatible with  
NAD 1983 coordinates

Note: 1 Meter=3937/1200 U.S. Survey Feet

## SKETCH OF REFERENCE TIES



Statement of evidence relative to this corner location is on back of page.

I hereby certify that this document and the data contained herein was prepared by me or under my direct supervision.

Ernest J. Reed Signature 1-24-2007 Date

Registration No. Minnesota No 9808

- Land Surveyor,  Professional Engineer
- County Surveyor,  County Engineer

## OFFICE OF THE COUNTY RECORDER

County of \_\_\_\_\_

I hereby certify that this document was filed in the County Recorder's office at \_\_\_\_\_ M. on the \_\_\_\_\_ day of \_\_\_\_\_ A.D., 20 \_\_\_\_\_

\_\_\_\_\_ day of \_\_\_\_\_ A.D., 20 \_\_\_\_\_

County Recorder \_\_\_\_\_

BY \_\_\_\_\_ Deputy

DOCUMENT NO. \_\_\_\_\_

## SOUTHWEST CORNER SECTIONS 34, T39, R25

### STATEMENT OF EVIDENCE

ORIGINAL SURVEY WAS DONE IN JUNE OF 1855. BEARING TREES NO LONGER REMAIN.

IN APRIL 1901 JOHN NELSON DID A SURVEY OF SECTION 33 AND FOUND THIS CORNER. HE DOES NOT STATE WHAT THE CORNER WAS.

IN OCTOBER 2002 WE MADE A SURVEY AROUND SECTION 34 AND PARTS OF SURROUNDING SECTIONS. WE FOUND A 1/2" IRON PIPE AT THE ROAD CENTER LINE'S EXTENDED. ON OCTOBER 24, 2002 WE EXCAVATED AT THIS LOCATION AND FOUND A SANDSTONE MONUMENT WITH A CHISELED X APPROXIMATELY 1 FOOT WEST OF THE IRON PIPE AND DOWN 18 INCHES. WE SET A KANABEC COUNTY MONUMENT AND TOOK TIES, THIS POSITION FITS THE STATE HIGHWAY DEPARTMENT WITHIN A FOOT OF THE DISTANCE THEY MEASURED TO THE CENTER LINE OF STATE HIGHWAY NO. 23.

IN JULY 2006 E.G. RUD AND SONS ESTABLISHED KANABEC COUNTY COORDINATES USING G.P.S. EQUIPMENT.