

CERTIFICATE OF LOCATION OF GOVERNMENT CORNER

South
NORTH 1/4 Corner of Section 32 39
Township 38 Range 25 4TH P.M.

STATE OF MINNESOTA, County of KANABEC

At the corner location shown on the sketch:

IN AUGUST 2005 FOUND MONUMENT AND ESTABLISHED GPS COORDINATES

Kanabec County U.S. Survey Feet Coordinates
NAD 1983, HARN 1996 Adjustment
Obtained by RTK GPS Observation

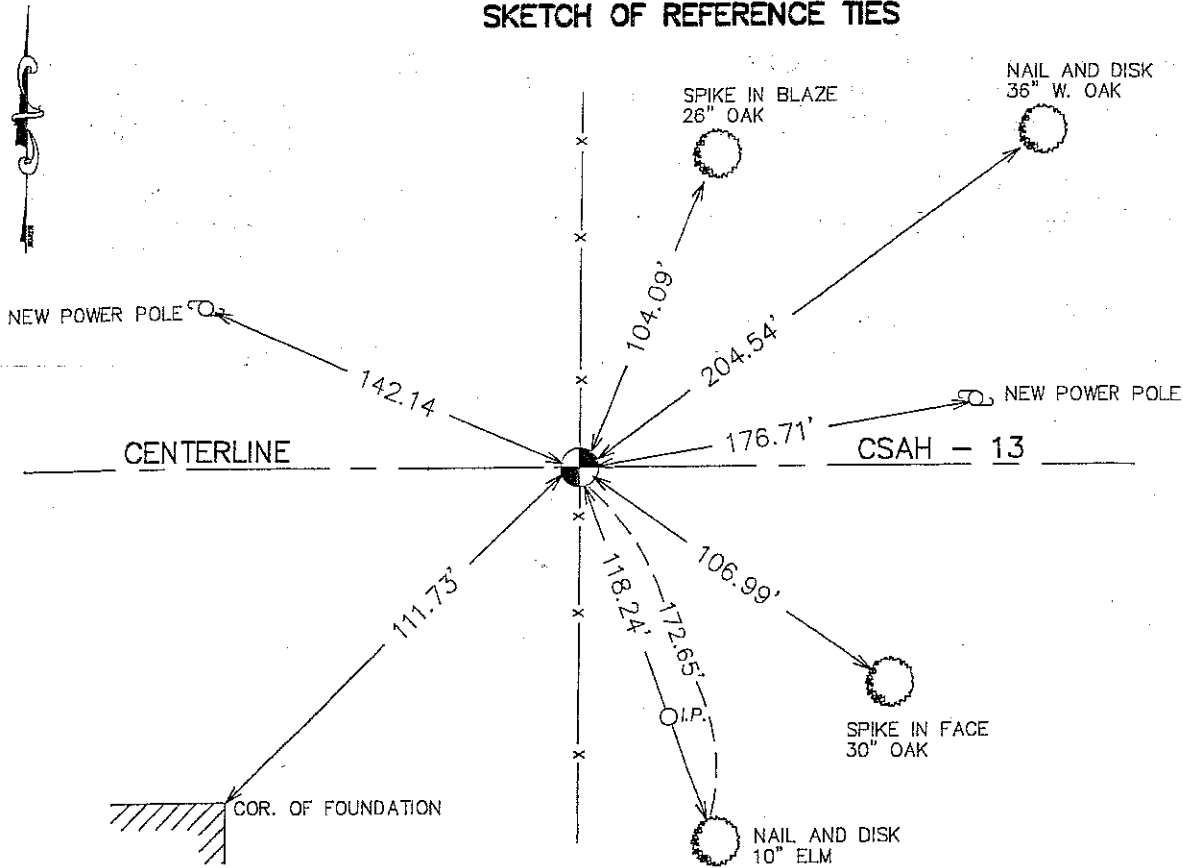
Northing= 133425.41

Easting= 351390.27

Note: NAD 1983, HARN 1996 Adjustment coordinates are NOT compatible with NAD 1983 coordinates

Note: 1 Meter=3937/1200 U.S. Survey Feet

SKETCH OF REFERENCE TIES



Statement of evidence relative to this corner location is on back of page.

I hereby certify that this document and the data contained herein was prepared by me or under my direct supervision.

Ernest J. Rud 11-09-2005
Signature Date

Registration No. Minn No 9808

Land Surveyor, [] Professional Engineer

OFFICE OF THE COUNTY RECORDER

County of _____

I hereby certify that this document was filed in the County Recorder's office at _____ M. on the

_____ day of _____ A.D., 20____

County Recorder _____

BY _____ Deputy

STATEMENT OF EVIDENCE

From tie sheet 321 A

ON JULY 24, 1973, JOHN OLIVER, REGISTERED LICENSE NO. 8194, FOUND A STONE MARKED WITH A CROSS AND SET A CAST ALUMINUM MONUMENT ON TOP OF THE STONE AT THIS CORNER AND FILED A CORNER CERTIFICATE.

ON SEPTEMBER 26, 1994, M.B. RUDE FOUND THE CAST ALUMINUM MONUMENT AND ONE OF JOHN OLIVER'S REFERENCE TIES TO THE NORTH. THE MONUMENT HAD BEEN HIT WITH THE ROAD GRADER AND WAS LEANING. ON OCTOBER 4, 1994, M.B. RUDE RESET THIS CORNER FROM JOHN OLIVER'S DISTANCE AND ANGLES FROM THE OTHER CORNERS IN SECTION 5 AND THE ONE REFERENCE TIE.

THIS CORNER WAS REMOVED DURING ROADWAY CONSTRUCTION IN 1997. THE COUNTY HIGHWAY SURVEY CREW LOCATED THE QUARTER CORNER PRIOR TO CONSTRUCTION AND PLACED ADDITIONAL REFERENCES OUTSIDE OF THE NEW CONSTRUCTION LIMITS.

BEFORE THE ROADWAY WAS PAVED IN 1998, THE CORNER WAS RE-ESTABLISHED ACCORDING TO REFERENCES OBTAINED PREVIOUSLY. ADDITIONAL REFERENCES WERE ALSO PLACED.

IN AUGUST 2005 E.G. RUD AND SONS FOUND THIS MONUMENT, CHECKED THE TIES, AND ESTABLISHED KANABEC COUNTY COORDINATES USING GPS EQUIPMENT.;