

# CERTIFICATE OF LOCATION OF GOVERNMENT CORNER

SE 31 39  
NORTHEAST Corner of Section 31, Township 38, Range 25, 4TH P.M.

STATE OF MINNESOTA, County of KANABEC

At the corner location shown on the sketch:

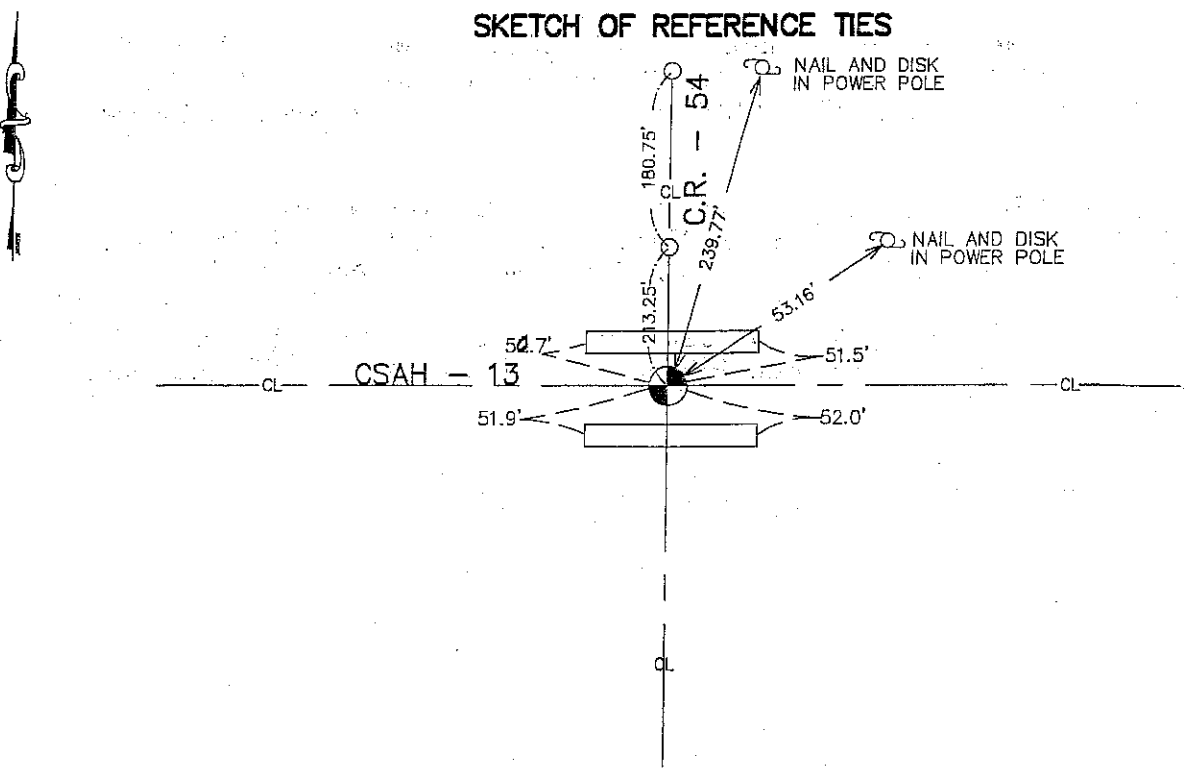
IN AUGUST 2005 FOUND CORNER AND ESTABLISHED GPS COORDINATES

Kanabec County U.S. Survey Feet Coordinates  
NAD 1983, HARN 1996 Adjustment  
Obtained by RTK GPS Observation

Northing= 133564.25  
Easting= 348711.57

Note: NAD 1983, HARN 1996 Adjustment coordinates are NOT compatible with NAD 1983 coordinates  
Note: 1 Meter=3937/1200 U.S. Survey Feet

### SKETCH OF REFERENCE TIES



Statement of evidence relative to this corner location is on back of page.

I hereby certify that this document and the data contained herein was prepared by me or under my direct supervision.

Ernest J. Blund 11-09-2005  
Signature Date

Registration No. Minn No 9808

Land Surveyor,  Professional Engineer

### OFFICE OF THE COUNTY RECORDER

County of \_\_\_\_\_

I hereby certify that this document was filed in the County Recorder's office at \_\_\_\_\_ M. on the \_\_\_\_\_ day of \_\_\_\_\_ A.D., 20 \_\_\_\_\_

County Recorder \_\_\_\_\_

BY \_\_\_\_\_ Deputy

**STATEMENT OF EVIDENCE FROM TIE SHEET 322 A**

ON JULY 24, 1973. JOHN OLIVER, REGISTRATION NO. 8194, FOUND A ROCK WITH A CROSS CHISELED ON ONE END AND LOWERED THE ROCK AND SET A CAST ALUMINUM ON TOP OF THE ROCK AND FILED A CORNER LOCATION CERTIFICATE.

ON SEPTEMBER 26, 1994, M.B. RUDE FOUND A CAST ALUMINUM MONUMENT LEANING TO THE EAST AND ONE OF JOHN OLIVER'S REFERENCE TIES TO THE NORTHEAST.

ON OCTOBER 14, 1994, M.B. RUDE REPLACED THE CAST ALUMINUM MONUMENT WITH A 7/8" BY 24" CAPPED REBAR FROM THE REFERENCE TIE AND JOHN OLIVER'S DISTANCES AND ANGLES TO OTHER CORNERS IN SECTION 5, TOWNSHIP 38, RANGE 25.

THIS CORNER WAS REMOVED DURING ROADWAY CONSTRUCTION IN 1997. THE COUNTY HIGHWAY SURVEY CREW LOCATED THE SECTION CORNER PRIOR TO CONSTRUCTION AND PLACED ADDITIONAL REFERENCES OUTSIDE OF THE NEW CONSTRUCTION LIMITS.

BEFORE THE ROADWAY WAS PAVED IN 1998, THE CORNER WAS RE-ESTABLISHED ACCORDING TO REFERENCES OBTAINED PREVIOUSLY. ADDITIONAL REFERENCES WERE ALSO PLACED.

IN AUGUST 2005 E.G. RUD FOUND THIS MONUMENT, CHECKED THE TIES, AND ESTABLISHED KANABEC COUNTY COORDINATES USING GPS EQUIPMENT.