

CERTIFICATE OF LOCATION OF GOVERNMENT CORNER

Southwest
NORTHWEST

Corner of Section 31, Township 39, Range 25, 4TH P.M.

STATE OF MINNESOTA, County of KANABEC

At the corner location shown on the sketch:
In July 2005 found a 7/8" x 24" capped rebar.

Kanabec County U.S. Survey Feet Coordinates
NAD 1983, HARN 1996 Adjustment
Obtained by RTK GPS Observation

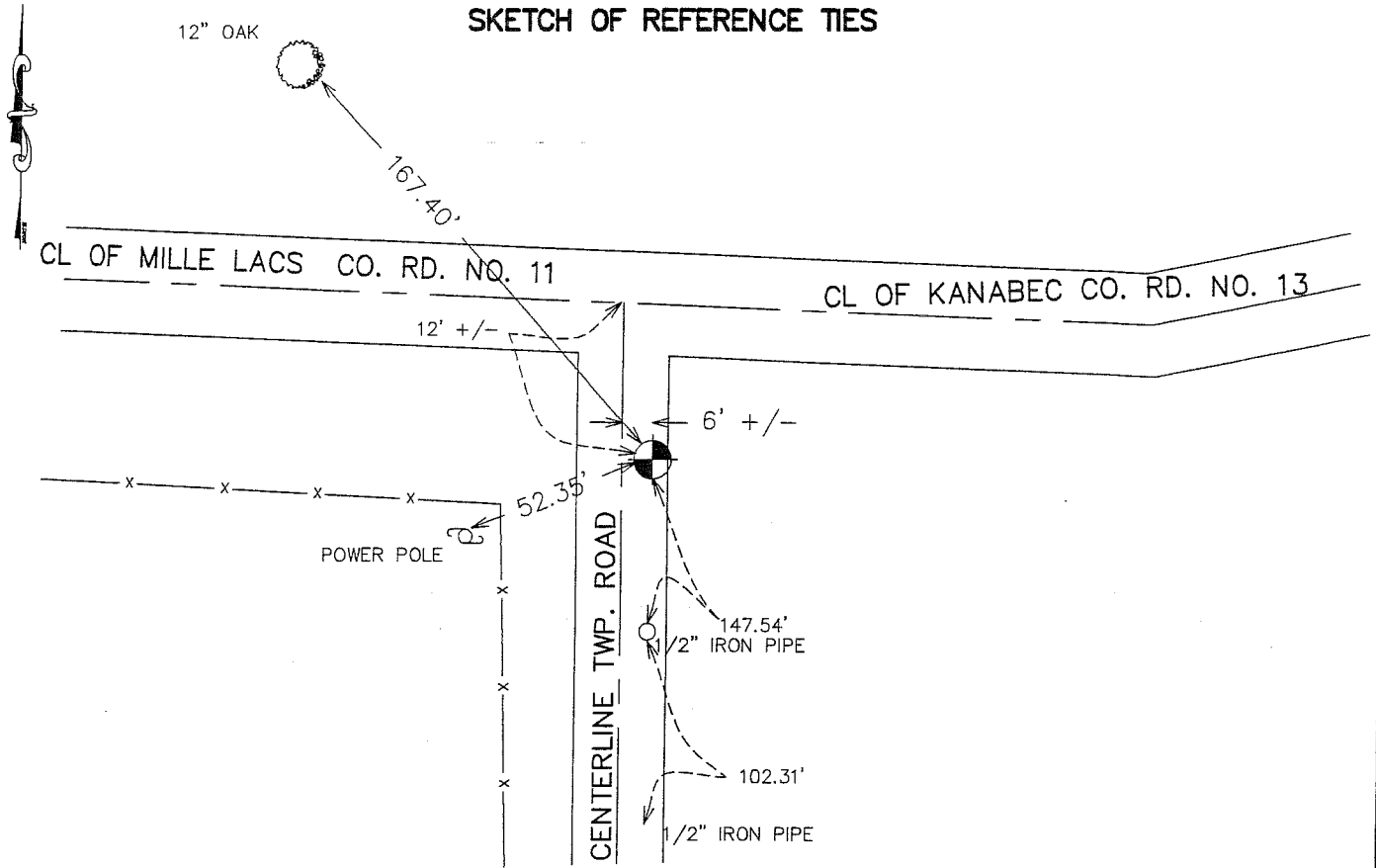
Northing= 133849.06

Easting= 342731.78

Note: NAD 1983, HARN 1996 Adjustment
coordinates are NOT compatible with
NAD 1983 coordinates

Note: 1 Meter=3937/1200 U.S. Survey Feet

SKETCH OF REFERENCE TIES



Statement of evidence relative to this corner location is on back of page.

I hereby certify that this document and the data contained herein was prepared by me or under my direct supervision.

Ernest L Reed
Signature

9-16-2005
Date

Registration No. 9808

Land Surveyor, Professional Engineer

County Surveyor, County Engineer

OFFICE OF THE COUNTY RECORDER

County of _____

I hereby certify that this document was filed in the County Recorder's office at _____ M. on the _____ day of _____ A.D., 20____

County Recorder _____

BY _____ Deputy

DOCUMENT NO. _____

STATEMENT OF EVIDENCE FROM TIE SHEET 923

THE COUNTY HIGHWAY SURVEY CREW LOCATED THE CORNER PRIOR TO ROAD CONSTRUCTION IN 1997 AND PLACED ADDITIONAL REFERENCE TIES OUTSIDE OF THE NEW CONSTRUCTION LIMITS.

THIS CORNER MAY HAVE BEEN REMOVED DURING CONSTRUCTION AS M. B. RUDE COULD NOT LOCATE IT ON 03/26/98. HIGHWAY SURVEY CREW RE-ESTABLISHED THIS CORNER ON 03/26/98 ACCORDING TO REFERENCES OBTAINED PREVIOUSLY.

2005

IN JULY 2005 WE LOCATED THIS CORNER CHECKED TIE INFORMATION AND TOOK ADDITIONAL TIES IF AVAILABLE AND ESTABLISHED KANABEC COUNTY COORDINATES ON THIS POSITION.