

CERTIFICATE OF LOCATION OF GOVERNMENT CORNER

W 1/4 Corner of Section 30, Township 39, Range 25, 4th P.M.
STATE OF MINNESOTA, County of KANABEC

At the corner location shown on the sketch:

*Found a 3/4" iron pipe set by
Mille Lacs County*

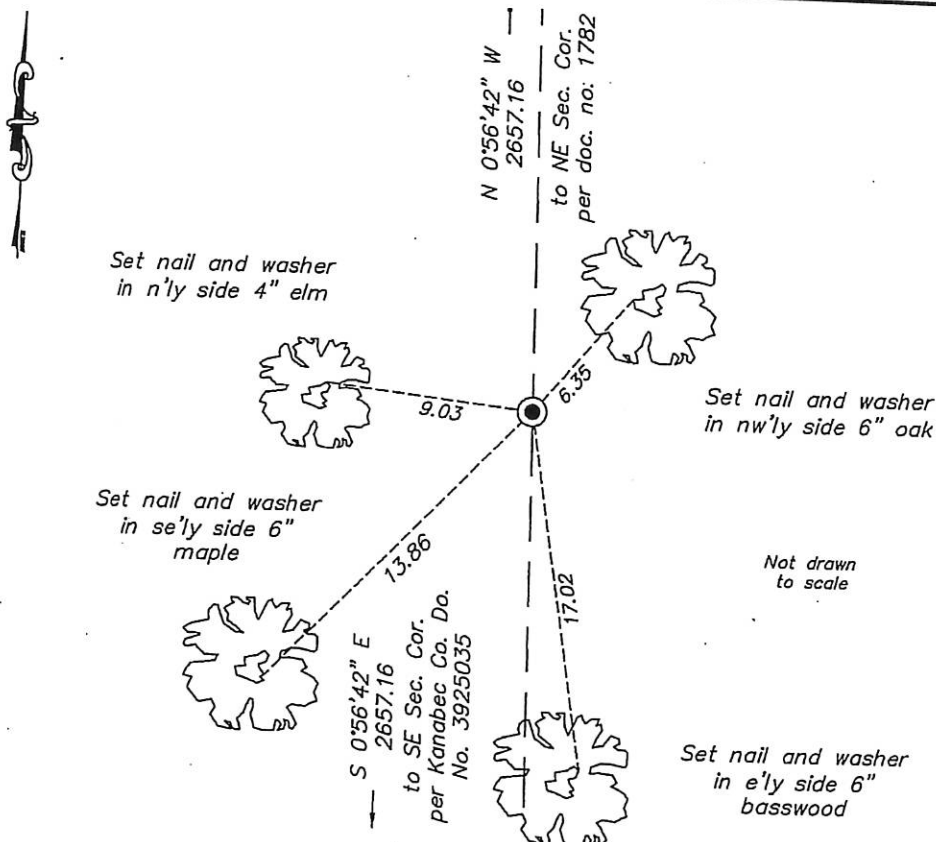
Kanabec County U.S. Survey Feet Coordinates
NAD 1983, HARN 1996 Adjustment
Obtained by RTK GPS Observation

Northing= _____

Easting= _____

Note: NAD 1983, HARN 1996 Adjustment
coordinates are NOT compatible with
NAD 1983 coordinates

Note: 1 Meter=3937/1200 U.S. Survey Feet



Statement of evidence relative to this corner location is on back of page.

I hereby certify that this document and the data contained herein was prepared by me or under my direct supervision.

Ernest L. Rud
Signature

10-3-2014
Date

Registration No. 9808

☒ Land Surveyor, ☐ Professional Engineer

☐ County Surveyor, ☐ County Engineer

OFFICE OF THE COUNTY RECORDER

County of _____

I hereby certify that this document was filed in the County Recorder's office at _____ M. on the

_____ day of _____ A.D., 20____

County Recorder _____

BY _____ Deputy

DOCUMENT NO. _____

Statement of Evidence:*West quarter corner Sec 30, T39, R25***East Quarter corner of Section 25, Township 39, Range 26, Mille Lacs County, Minnesota.**

The East Quarter corner of Section 25 was placed in 1851 by U.S. Deputy Surveyor Daniel Higbee. The General Land Office (GLO) survey notes indicate that a 'post' was placed at the subject corner distant 40.00 chains south from the Northeast corner of Section 25. Two bearing trees are listed in the original survey notes as accessories to the corner 'post'.

Survey notes for Section 25 by Mille Lacs County Deputy Surveyor S.L. Kennedy dated 1917 were found in Record of Surveys Book C, on file in the Office of the County Recorder, pages 210 and 211. However, the notes do not indicate information concerning the subject Quarter corner.

A sketch found in the records of the Mille Lacs County Auditor titled "*Road Right-of-Way in Sec. 25 T. 39 N. R. 26 W*", dated April 5, 1976, and signed by Land Surveyor N.C. Peterson, Minnesota license number 1540, identifies a 66 foot strip of land centered on the quarter Section line between the West Quarter corner of Section 25 and the center of Section 25.

A Supervisors' Road Order dated May 8, 1915 was found in the records of the Kanabec County Auditor which described a 'new road' as follows: *Beginning at the SE. corner of the NE ¼ and the SE. * corner of the SE ¼ west one mile on the half sec line in Sec 30 Town 39 R 25 and terminating at the S.W. corner of N.W. ¼ of Sec 30.* (Note: Typed as written on Road Order, *corner call likely intended to indicate NE corner of the SE 1/4).

A Supervisors' Road Order was found in the records of the Kanabec County Auditor for the vacation of a road described as follows: *Beginning at the Southeast corner of the West Half of the Northeast Quarter of Section Thirty (30) Township 39 Range 25 and thence running west three quarters of a mile more or less to the Mille Lacs County line.*

A Certificate of Location of Government Corner is on file as document number 1782 in the Office of the Mille Lacs County Recorder for the Northeast Corner of Section 25. In June, 2014, a ½" iron pipe with a plastic cap inscribed '13293' (Land Surveyor Frank Kriz) was found consistent with document number 1782.

A Certificate of Location of Government Corner is on file as document number 3925035 in the records of the Kanabec County Surveyor for the Southeast Corner of Section 25. In June, 2014, a stone marked with an 'X' was found consistent with document number 3925035.

The distance between the above two Section corners measured 5314.32 feet in June, 2014.

No Certificate of Location of Government Corner was on file in Mille Lacs County for the subject corner and no additional information concerning to the subject Quarter corner was available from the Kanabec County Surveyor.

(over)

A search in the vicinity of the subject Quarter corner was conducted in the field based on information collected. Some remnants of a barbed wire fence line were located in the corner search locus, although, an insufficient length of wire was located to determine accurate direction of the fencing.

No conclusive remnants of a previous corner marker or accessories were found in the vicinity of the subject East Quarter corner. A stream identified in the original GLO running notes, distant 35.25 chains south from the Northeast corner of Section 25 is in existence at the present, and conforms to the original chainage based on proportional measurement between the Northeast and Southeast corners of Section 25.

A temporary point, hereinafter referred to as 'Point A', was placed at the midpoint of a straight line between the Northeast and Southeast corners of Section 25.

An iron reinforcement rod with an aluminum cap was found at the East Quarter corner of Section 30, Township 39, Range 25 consistent with Kanabec County (Surveyor) document number 3925117.

The gravel centerline as travelled of 175th St., and the westerly continuation thereof, which is posted in the field as a 'Private Drive' was field located for relationship with a straight line between the East Quarter corner of Section 30, Township 39, Range 25 and 'Point A'. Although some slight winding along the 'Private Drive' was evident, the overall field location conformed to the straight line between the East Quarter corner of Section 30, Township 39, Range 25 and 'Point A', and appears to conform to the above mentioned Supervisors' Road Orders on file in the Office of the Kanabec County Auditor.

A field examination also indicated that a straight line from 'Point A' to the West Quarter corner of Section 25, Township 39, Range 26 according to document number 1746 on file in the Office of the Mille Lacs County Recorder conforms to the occupied lines.

Based on the information collected, I have determined that the condition of the subject corner is lost. On June 12, 2014, I placed a 'U' channel fence post with an aluminum cap inscribed MILLE LACS COUNTY LAND CORNER on top and a 3/4" iron pipe nestled in the base of the 'U' channel fence post at the above mentioned 'Point A'. The distance to the Northeast Section corner measured 2657.16 feet and the distance to the Southeast Section corner measured 2657.16 feet.

Notes:

The GLO notes identified a 10" Black Oak tree at N 47 W, distant .4 (chains) from the subject corner. 'Point A' is in the crater left by a fallen 18" oak tree. No markings could be found on the tree remnants.

Measurements to the Quarter corners to the east and to the west of the subject Quarter corner indicate excess distances as compared to GLO records. However, the excess is consistent with the excess found along the Quarter Section lines of the Sections proximately to the east and west of Section 25.

East Quarter corner of Section 25, Township 39, Range 26
West " " " " 30 " " " 25

3 of 3