

CERTIFICATE OF LOCATION OF GOVERNMENT CORNER

NORTHWEST Corner of Section 06, Township 39, Range 25, 4TH P.M.
STATE OF MINNESOTA, County of KANABEC

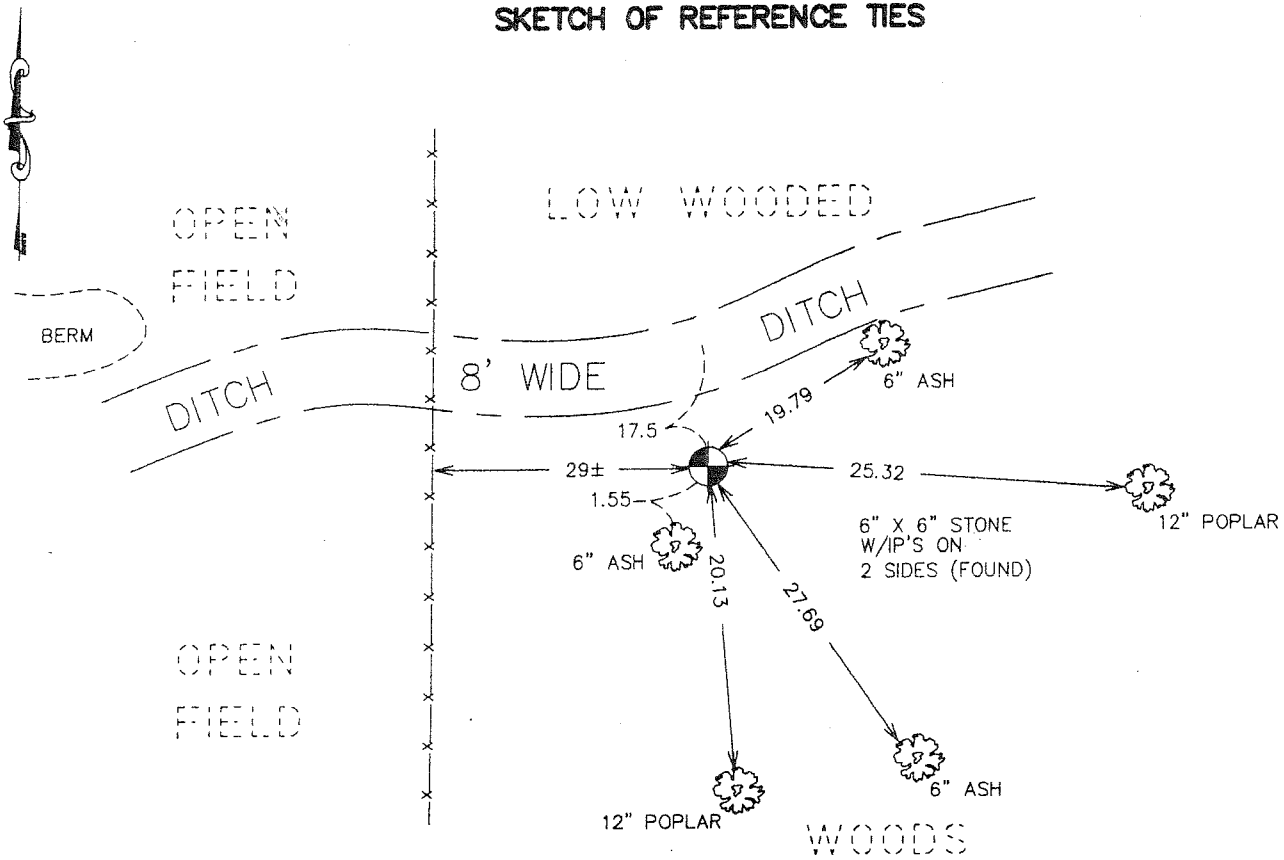
At the corner location shown on the sketch:
FOUND THIS MONUMENT
AND ESTABLISHED G.P.S. COORDINATES ON ITS LOCATION.

Kanabec County U.S. Survey Feet Coordinates
NAD 1983, HARN 1996 Adjustment
Obtained by RTK GPS Observation

Northing= 165609.44
Easting= 342603.51

Note: NAD 1983, HARN 1996 Adjustment
coordinates are NOT compatible with
NAD 1983 coordinates
Note: 1 Meter=3937/1200 U.S. Survey Feet

SKETCH OF REFERENCE TIES



Statement of evidence relative to this corner location is on back of page.

I hereby certify that this document and the data contained herein was prepared by me or under my direct supervision.

Ernest Shedd 1-24-2007
Signature Date

Registration No. Nimm No 9808

- Land Surveyor, Professional Engineer
- County Surveyor, County Engineer

OFFICE OF THE COUNTY RECORDER

County of _____

I hereby certify that this document was filed in the County Recorder's office at _____ M. on the

_____ day of _____ A.D., 20__

County Recorder _____

BY _____ Deputy

DOCUMENT NO. _____

NORTHWEST CORNER SECTIONS 6, T39, R25

STATEMENT OF EVIDENCE

THE EAST LINE OF TOWNSHIP 39, RANGE 26 WAS RUN BY DEPUTY SURVEYOR DANIEL HIGBEE IN DECEMBER 1851. ANY REMNANTS OF HIS MONUMENT OR ACCESSORIES FOR THIS CORNER NO LONGER REMAIN.

THE OLD SURVEY RECORD BOOKS KEPT IN THE VAULT AT THE MILLE LACS COUNTY HIGHWAY DEPARTMENT SHOW THE FOLLOWING SURVEY WITH EVIDENCE PERTAINING TO THIS CORNER. A 1915 SURVEY OF THE NORTH LINE OF SECTION 1 BY COUNTY SURVEYOR R.S. CHAPMAN SHOWING A STONE AT SAID CORNER WITH TWO DISTANCES OF 1328.7' TO THE NORTH QUARTER CORNER OF SAID SECTION 1. HE ALSO SHOWS THE FOLLOWING TIES:

28" PINE STUMP SOUTH 73° 15' EAST 49.6'

28" PINE STUMP SOUTH 68° WEST 93.8'

WE KNOW OF NO OTHER SURVEYS REGARDING THIS CORNER.

ON 02/08/91 DURING JOHN OLIVERS FOR THE COUNTY HIGHWAY DEPARTMENTS C.S.A.H. #24 PROJECT, SAID STONE WAS FOUND. IRON PIPES HAD BEEN PLACED ON TWO SIDES OF SAME BY PARTIES UNKNOWN.

AS THE DISTANCES ALONG THE NORTH OF SECTION 1 CHECKED WELL DURING OUR RESURVEY THE STONE WAS ACCEPTED AS BEING IN THE CORRECT PLACE AND AS A PERPETUATION OF THE SUBJECT CORNER.

IN 2003 E.G. RUD AND SONS FOUND SAID STONE AND ESTABLISHED KANABEC COUNTY COORDINATES USING G.P.S. EQUIPMENT.