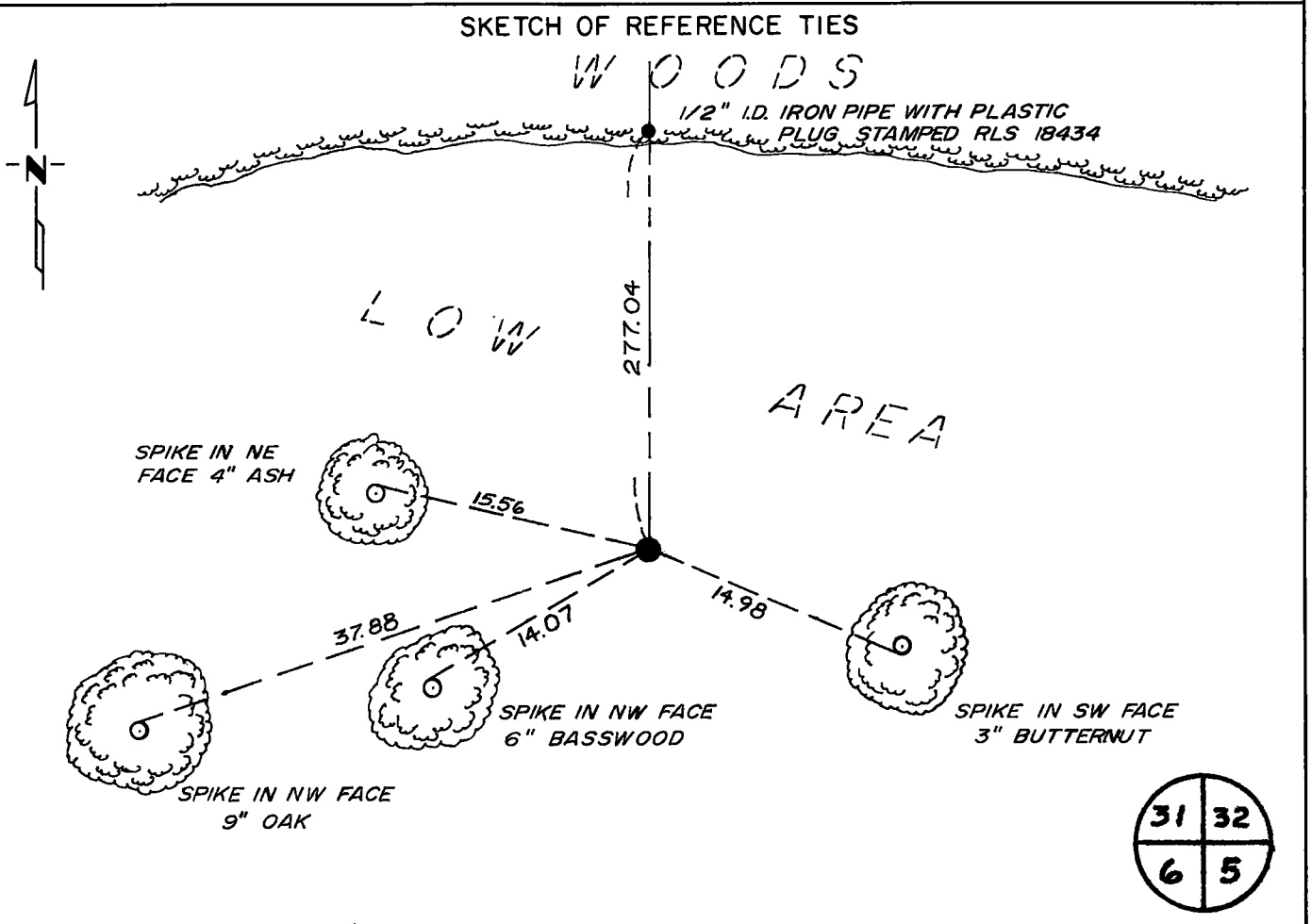


# CERTIFICATE OF LOCATION OF GOVERNMENT CORNER

NORTHEAST Corner of Section 6, Township 39 N, Range 25 W, 4TH P.M.  
STATE OF MINNESOTA, County of Kanabec

At the corner location shown on the sketch:

- On \_\_\_\_\_ found a \_\_\_\_\_  
DATE
- left monument as found,  lowered monument,  removed monument (explain)
- On 8-6-91 placed a Kanabec Co. cast iron monument and established  
DATE 5 reference ties as shown.



Statement of evidence relative to this corner location is on back of page.

I hereby certify that this document and the data contained herein was prepared by me or under my direct supervision.

Michael J. Tol 8-27-93  
SIGNATURE DATE

Registration No. 18434

Land Surveyor,  Professional Engineer

County Surveyor,  County Engineer

OFFICE OF THE COUNTY RECORDER

County of Kanabec

I hereby certify that this document was filed in the Co. Recorders office at 10:15 A .M. on the 10 day of September A.D., 1993

County Recorder Velma J. Besser

By \_\_\_\_\_, Deputy

DOCUMENT NO. \_\_\_\_\_

Statement of Evidence:

NE CORNER, SEC.6, T.39, R.25, KANABEC COUNTY, MINNESOTA

The NE corner of Sec.6 was originally set in 1849 by Silas Barnard, Deputy Surveyor. A post was placed and witness trees established. No remains of the post or witness trees were found.

In 1910, John Nelson, Co. Surveyor, recorded a survey in Book A of Surveyor's Record, pages 58 & 59. He noted a Gov't. witness at this corner and placed a sandstone monument with "X". He recorded distances of 5409.36 feet to the NE corner of Sec.5 and 5072.76 feet to the NW corner of Sec.32, T.40, R.25. Nelson also recorded placing sandstone monuments at all corners of the SW $\frac{1}{4}$  of Sec.32, T.40, R.25. None of the monuments recorded by Nelson could be found.

In late 1990 a survey crew from John Oliver & Assoc., Inc., Elk River, Minn., found a stone monument at the NW corner of Sec.6.

Using information supplied to me by Mr. Oliver I prorated a distance from the assumed NE corner of Sec.5 to the NW corner of Sec.6. This resulted in a total distance along the North line of Sec.5 of 5400.68 feet. This compared quite well with the recorded distance of Nelson and thus a cast iron monument was placed with a resulting distance of 5237.96 feet to the NW corner of Sec.32, T.40, R.25 on August 6, 1991.

On September 18, 1992 at the request of the Kanabec County Surveyor we excavated at the NE corner of Sec.5, T.39, R.25 and recovered a sandstone with an "X" inscribed on its top. No adjustments were made to the subject corner or the N $\frac{1}{4}$  corner of Sec. 5.

A new prorated position for the subject corner would lie 1.43 feet South and 2.20 feet West of the monument.