

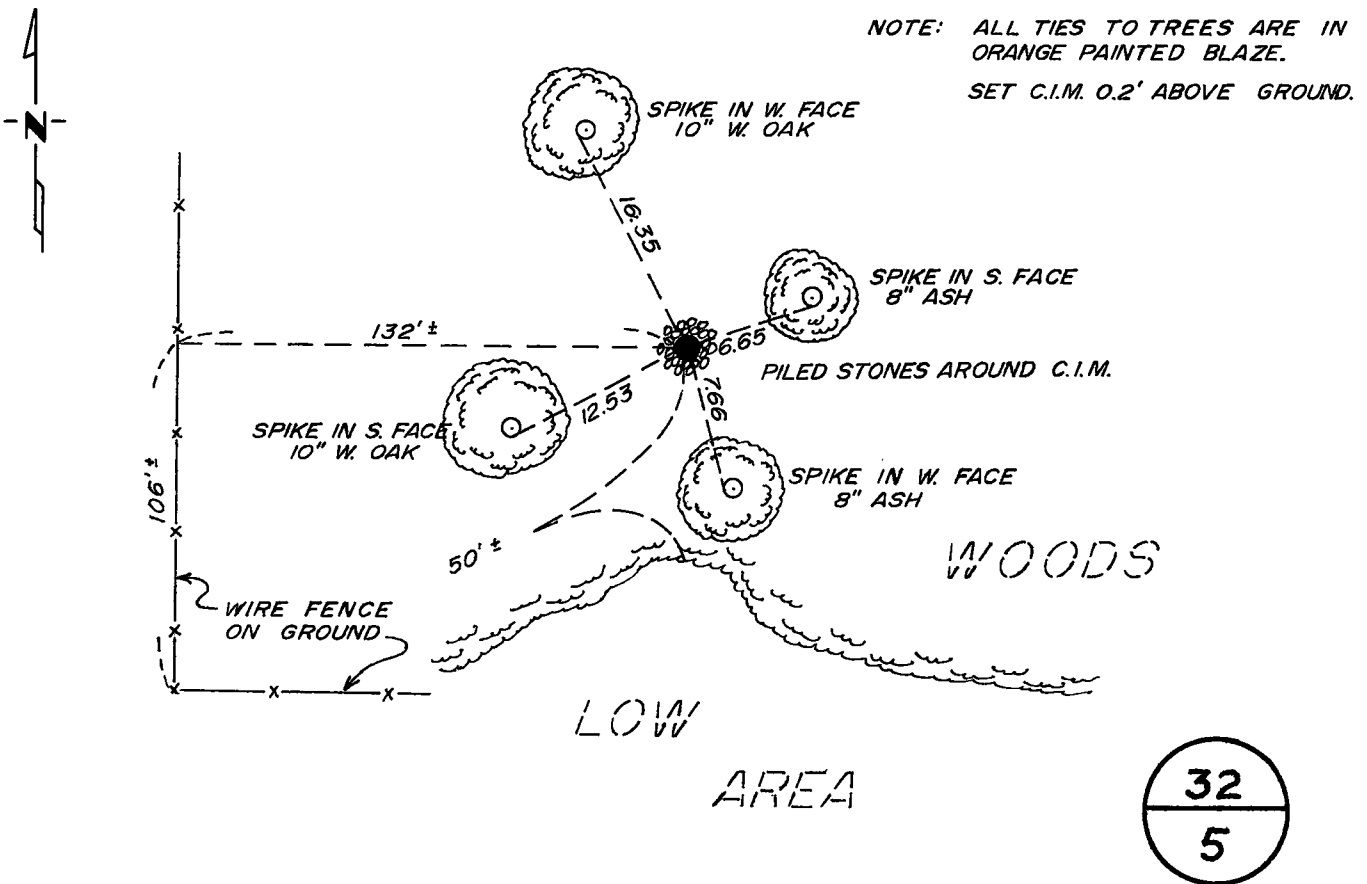
# CERTIFICATE OF LOCATION OF GOVERNMENT CORNER

NORTH 1/4 Corner of Section 5, Township 39 N, Range 25 W, 4TH P.M.  
STATE OF MINNESOTA, County of Kanabec

At the corner location shown on the sketch:

- On \_\_\_\_\_ found a \_\_\_\_\_  
DATE
- left monument as found,  lowered monument,  removed monument (explain)
- On 8-7-91 placed a Kanabec Co. cast iron monument and  
DATE established 4 reference ties as shown.

### SKETCH OF REFERENCE TIES



32  
—  
5

Statement of evidence relative to this corner location is on back of page.

I hereby certify that this document and the data contained herein was prepared by me or under my direct supervision.

Michael J. Taha 8-27-93  
SIGNATURE DATE

Registration No. 18434

Land Surveyor,  Professional Engineer

County Surveyor,  County Engineer

OFFICE OF THE COUNTY RECORDER

County of Kanabec

I hereby certify that this document was filed in the Co. Recorders office at 10:15 A.M. on the 10 day of September A.D., 1993

County Recorder Edna J. Basser

By \_\_\_\_\_, Deputy

DOCUMENT NO. \_\_\_\_\_

**Statement of Evidence:**

N $\frac{1}{4}$  CORNER, SEC.5, T.39, R.25, KANABEC COUNTY, MINNESOTA

The N $\frac{1}{4}$  corner of Sec.5 was originally set in 1849 by Silas Barnard, Deputy Surveyor. A post was placed and witness trees established. No remains of the post or witness trees were found

In 1910, John Nelson, Co. Surveyor, recorded a survey in Book A of Surveyor's Record, pages 58 & 59. He noted a sandstone monument set midway on line between the SE and SW corners of Sec.32, T.40, R.25. An extensive search was made and no sandstone monument was found.

A cast iron monument was placed midway on line between the NE and NW corners of Sec. 5 after prorating the distance between a found stone monument at the NW corner of Sec.6 and the assumed NE corner of Sec.5. The resulting distances along the North line of Sec. 5 match closely with those distances measured by Surveyor Nelson in 1910.

On September 18, 1992 at the request of the Kanabec County Surveyor we excavated at the NE corner of Sec.5 and recovered a sandstone with an "X" inscribed on its top. No adjustments were made to the subject corner or the NW corner of Sec.5.

A new prorated position for the subject corner would lie 0.13 feet North and 3.15 feet West of the monument.