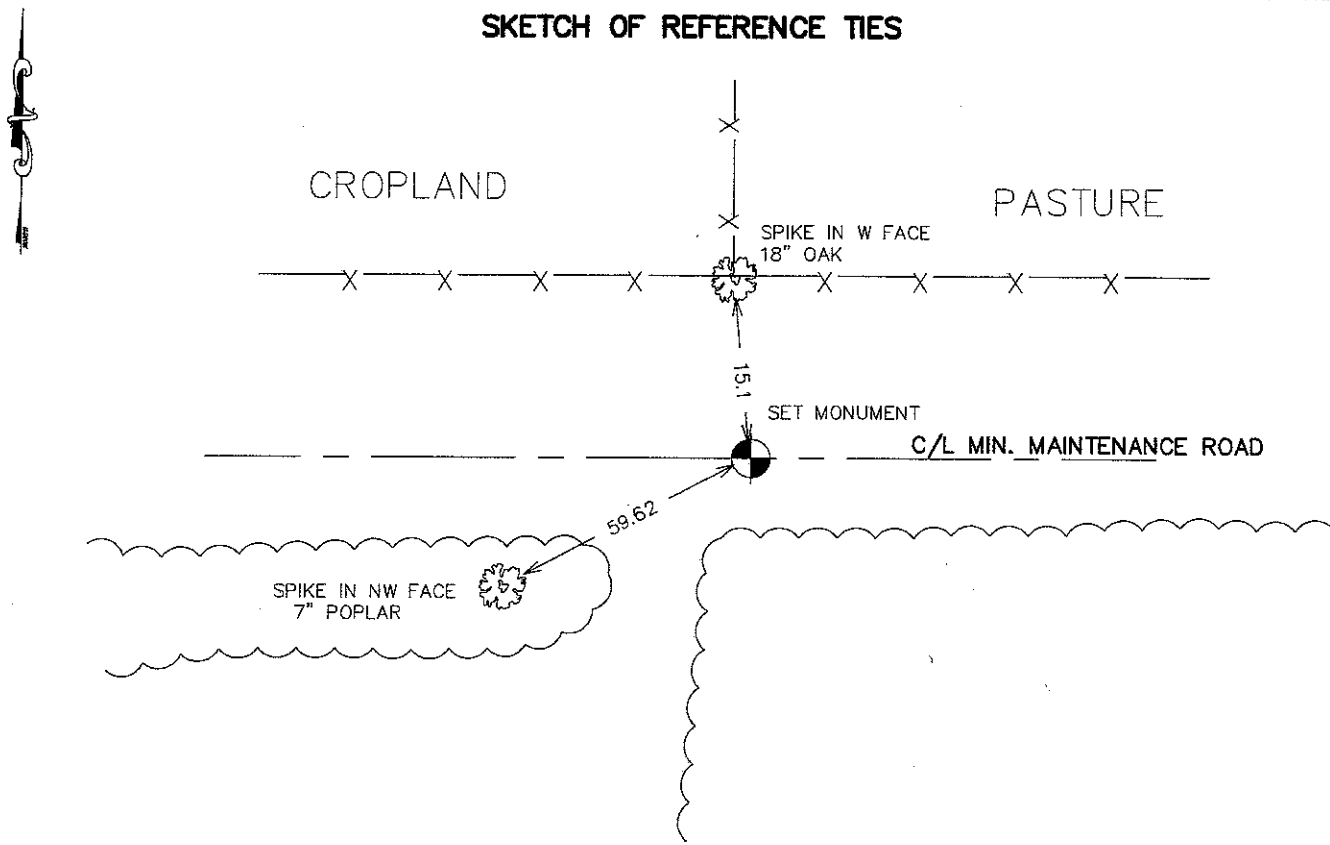


CERTIFICATE OF LOCATION OF GOVERNMENT CORNER

NORTH QUARTER Corner of Section 4, Township 39, Range 25, 4TH P.M.
 STATE OF MINNESOTA, County of KANABEC

At the corner location shown on the sketch: SET #7 REBAR WITH AN ALUMINUM CAP AND ESTABLISHED KANABEC COUNTY COORDINATES ON ITS LOCATION.	Kanabec County U.S. Survey Feet Coordinates NAD 1983, HARN 1996 Adjustment Obtained by RTK GPS Observation Northing= <u>164932.39</u> Easting= <u>356304.95</u> Note: NAD 1983, HARN 1996 Adjustment coordinates are NOT compatible with NAD 1983 coordinates Note: 1 Meter=3937/1200 U.S. Survey Feet
---	--

SKETCH OF REFERENCE TIES



Statement of evidence relative to this corner location is on back of page.

I hereby certify that this document and the data contained herein was prepared by me or under my direct supervision.

Ernest J. Dred Aug 15, 2007
 Signature Date

Registration No. Minn No 9808

Land Surveyor, Professional Engineer
 County Surveyor, County Engineer

OFFICE OF THE COUNTY RECORDER

County of _____

I hereby certify that this document was filed in the County Recorder's office at _____ M. on the _____ day of _____ A.D., 20____

County Recorder _____

BY _____ Deputy

DOCUMENT NO. _____

NORTH QUARTER CORNER SECTION 04, T39, R25

STATEMENT OF EVIDENCE

THE ORIGINAL CORNER WAS SET BY DEPUTY SURVEYOR SILAS BARNARD IN JUNE 1855 AND 2 BEARING TREES ESTABLISHED. NO VISIBLE EVIDENCE TO THE CORNER OR BEARING TREES COULD BE FOUND. THIS CORNER FALLS ON THE CENTERLINE OF A MINIMUM MAINTENANCE ROAD, A FENCE LINE RUNNING NORTH AND AN OCCUPATION LINE TO THE SOUTH

ON MAY 22ND 2007, A 35' X 10' EXCAVATION WAS MADE ONE FOOT INTO NATURAL GROUND. NO EVIDENCE WAS FOUND IN THE EXCAVATION. THEREFORE THE CENTERLINE OF THE MINIMUM MAINTENANCE ROAD AND THE OCCUPATION LINES WERE DETERMINED TO BE THE BEST EVIDENCE FOR THE CORNER. A #7 REBAR WITH AN ALUMINUM CAP WAS SET, TIES TAKEN, AND KANABEC COUNTY COORDINATES WERE ESTABLISHED ON THIS POSITION.