

CERTIFICATE OF LOCATION OF GOVERNMENT CORNER

NORTHEAST Corner of Section 4, Township 39, Range 25, 4TH P.M.
 STATE OF MINNESOTA, County of KANABEC

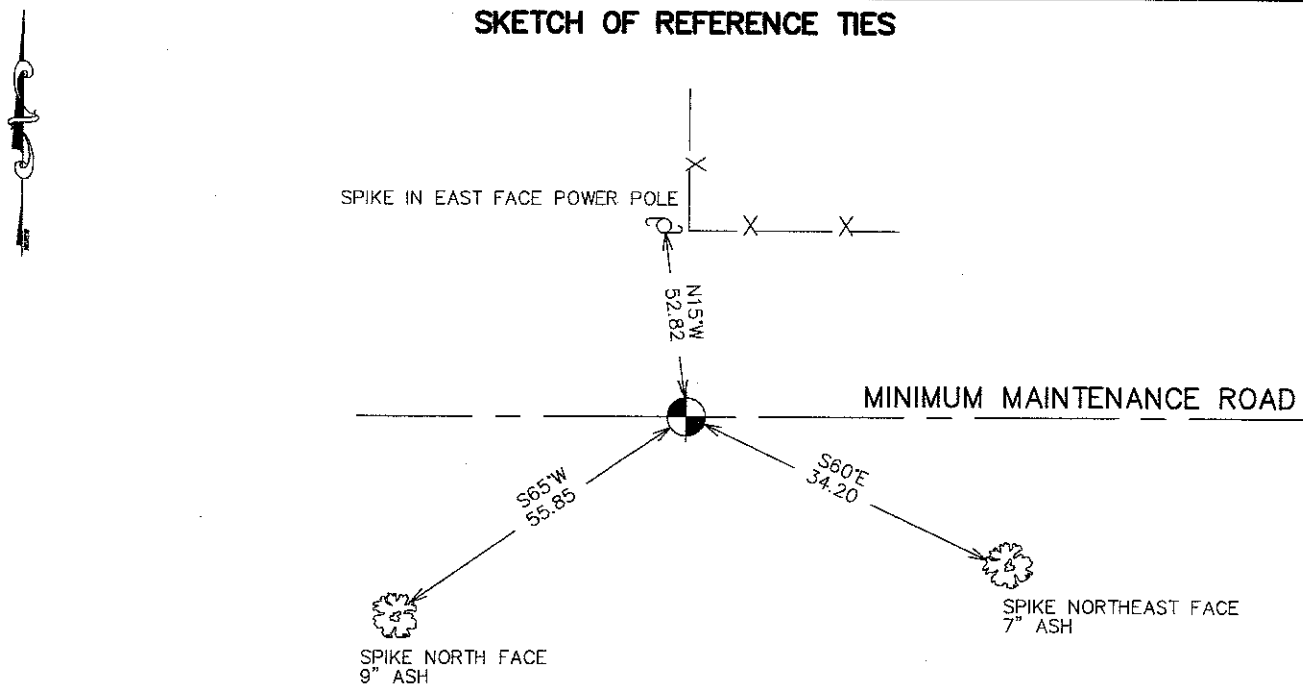
At the corner location shown on the sketch:
 SET #7 REBAR WITH ALUMINUM CAP
 ESTABLISHED KANABEC COUNTY COORDINATES ON THIS POSITION

Kanabec County U.S. Survey Feet Coordinates
 NAD 1983, HARN 1996 Adjustment
 Obtained by RTK GPS Observation

Northing= 164805.27
 Easting= 358991.90

Note: NAD 1983, HARN 1996 Adjustment
 coordinates are NOT compatible with
 NAD 1983 coordinates
 Note: 1 Meter=3937/1200 U.S. Survey Feet

SKETCH OF REFERENCE TIES



Statement of evidence relative to this corner location is on back of page.

I hereby certify that this document and the data contained herein was prepared by me or under my direct supervision.

Ernest J. [Signature]
 Signature

12-19-2007
 Date

Registration No. 9808

Land Surveyor, Professional Engineer
 County Surveyor, County Engineer

OFFICE OF THE COUNTY RECORDER

County of _____

I hereby certify that this document was filed in the County Recorder's office at _____ M. on the _____ day of _____ A.D., 20____

County Recorder _____

BY _____ Deputy

DOCUMENT NO. _____

NORTHEAST CORNER SECTION 4, T39, R25

STATEMENT OF EVIDENCE

THE ORIGINAL CORNER WAS SET BY DEPUTY SURVEYOR SILAS BARNARD IN JUNE 1855. A WOOD POST WAS SET FOR THE CORNER AND 4 BEARING TREES ESTABLISHED. NO VISIBLE EVIDENCE TO THE CORNER OR BEARING TREES REMAIN.

A TOWNSHIP ROAD ORDER DATED APRIL 6, 1915 WAS FILED OPENING A 4 ROD ROAD FROM THE NORTHEAST CORNER OF SECTION 3 TO THE NORTHWEST CORNER OF SECTION 4. NO SURVEY FOR THIS OPENING COULD BE FOUND NOR COULD ANY SUBSEQUENT SURVEYS ALONG THIS LINE.

IN 2006 E.G. RUD AND SONS RAN A SURVEY ALONG THE NORTH LINE OF SECTIONS 2, 3, 4 AND 5 TO LOCATE EXISTING MONUMENTATION AND LINES OF OCCUPATION. THIS CORNER FALLS ON THE CENTERLINE OF AN EAST-WEST ROAD AND A FENCE LINE RUNNING NORTH AND SOUTH. E.G. RUD MET WITH GLORIA BLOWERS WHO OWNS LAND IN SECTION 3 AND SECTION 33 ON NOVEMBER 14, 2007 AND SHE STATED THAT HER AND HER HUSBAND HAVE LIVED ON THE PRESENT FARMS SINCE THE 1950'S AND ALWAYS FIGURED THE FENCE LINE WAS THE SECTION LINE.

ON MAY 22, 2007 AN EXCAVATION WAS MADE ON THE CENTERLINE OF THE ROAD AND EXTENSIONS OF FENCE LINES. NO EVIDENCE FOR THE CORNER COULD BE FOUND. THEREFORE THE OCCUPATION LINES WERE ACCEPTED AS THE BEST EVIDENCE FOR THE CORNER. A #7 REBAR WITH AN ALUMINUM CAP WAS SET, TIES TAKEN AND KANABEC COUNTY COORDINATES ESTABLISHED ON THIS POSITION.