

# CERTIFICATE OF LOCATION OF GOVERNMENT CORNER

~~N4~~ Corner of Section ~~31~~<sup>3</sup>, Township ~~40N~~<sup>39</sup>, Range ~~25W~~<sup>25</sup> 4th P.M.  
STATE OF MINNESOTA, County of..... KANABEC .....

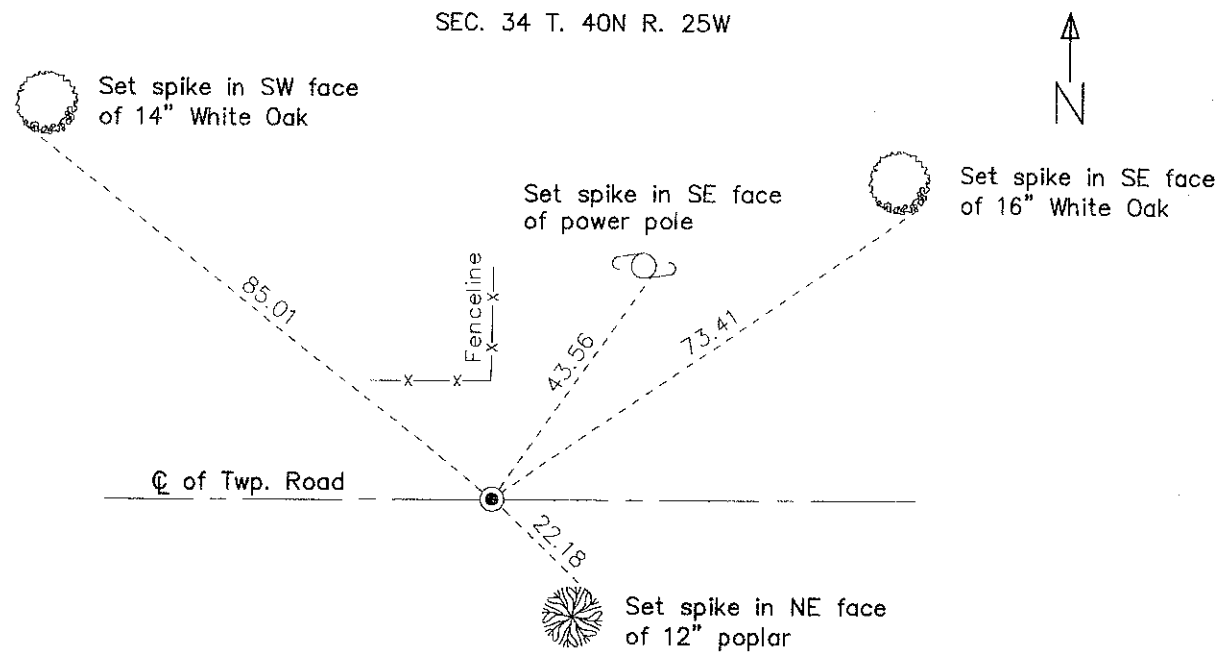
At the corner location shown on the sketch

- On.....found a.....  
Date
- left monument as found,  lowered monument  removed monument(explain)
- On..... 9/07/07 .....placed a..... 7/8"x20" rebar with Kanabec Co. cap  
Date

## SKETCH OF REFERENCE TIES

Kanabec County U.S. Survey Feet  
Coordinates NAD 1983, HARN  
Adjustment

Northing= 164664.561  
Easting= 361561.669



Statement of evidence relative to this corner location is on back of page.

I hereby certify that this document and the data contained herein was prepared by me or under my direct supervision

[Signature] 16091  
Signature Date

Registration No. ....16091.....  
 Land Surveyor,  County Surveyor,  
 Professional Engineer,  County Engineer.

OFFICE OF THE COUNTY SURVEYOR  
County of ..... Kanabec .....

I hereby certify that this document was filed in the County Surveyor's office at.....M. on the .....day of.....A.D., 20.....

County Surveyor.....

By ..... Deputy

DOCUMENT NO. ....

**STATEMENT OF EVIDENCE:**

S1/4 Corner Section 34, Township 40N, Range 25W

This corner position was originally established during the survey of the township line in August, 1849. The original post or witness trees made during the original survey could not be relocated. A township road order dated April 6th, 1915, on file with the Kanabec County Recorder, indicated a township road was intended to be laid out along the township line from the Southeast corner of Section 34 to Southwest corner of Section 33. There appears to be no official survey of the layout of this road.

In the spring of 2007, Kanabec County Surveyor, Ernie Rud, excavated the area (centerline township road and fence line north) for any monuments that may have been set for any unrecorded or unknown survey. Nothing was found.

After consulting with Mr. Rud on Sept. 7th 2007, we set an Aluminum Capped Rebar marked Kanabec County Land Corner at the obliterated position for said South Quarter Corner. Said position being the centerline of existing township road and a fenceline north. We used this position for a boundary survey in the Southeast Quarter of said Section 34.