

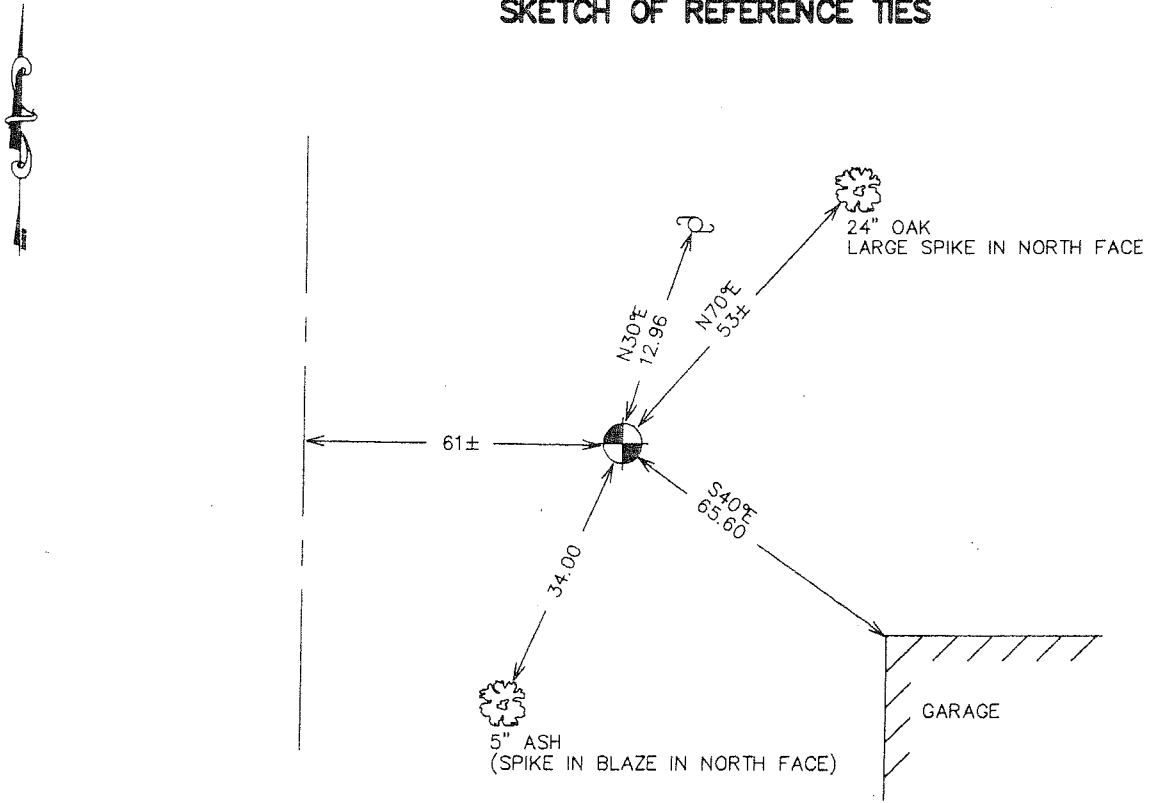
# CERTIFICATE OF LOCATION OF GOVERNMENT CORNER

NORTHEAST Corner of section 3, Township 39, Range 25, 4TH P.M.  
STATE OF MINNESOTA, County of KANABEC

At the corner location shown on the sketch:  
FOUND THIS MONUMENT  
AND ESTABLISHED G.P.S. COORDINATES ON ITS LOCATION.

Kanabec County U.S. Survey Feet Coordinates  
NAD 1983, HARN 1996 Adjustment  
Obtained by RTK GPS Observation  
Northing= 164514.10  
Easting= 364222.62  
Note: NAD 1983, HARN 1996 Adjustment  
coordinates are NOT compatible with  
NAD 1983 coordinates  
Note: 1 Meter=3937/1200 U.S. Survey Feet

## SKETCH OF REFERENCE TIES



Statement of evidence relative to this corner location is on back of page.

I hereby certify that this document and the data contained herein was prepared by me or under my direct supervision.

Ernest Rud 1-24-2007  
Signature Date

Registration No. Minn No 9808

- Land Surveyor,  Professional Engineer
- County Surveyor,  County Engineer

### OFFICE OF THE COUNTY RECORDER

County of \_\_\_\_\_

I hereby certify that this document was filed in the County Recorder's office at \_\_\_\_\_ M. on the \_\_\_\_\_ day of \_\_\_\_\_ A.D., 20\_\_\_\_

County Recorder \_\_\_\_\_

BY \_\_\_\_\_ Deputy

DOCUMENT NO. \_\_\_\_\_

## NORTHEAST CORNER SECTIONS 3, T39, R25

### STATEMENT OF EVIDENCE

IN 1909, THE FORMER COUNTY SURVEYOR, JOHN NELSON, FOUND A STONE THAT HAD BEEN FORMERLY PLACED AT THIS CORNER.

IN 1938, CHARLES HANDSHU, A SURVEYOR, FOUND THE STONE WITH A "+" CUT IN IT AND TOOK NEW TIES - 18" PINE NORTHEAST 47.9 FEET, 18" PINE NORTHEAST 56.9 FEET.

THE MINNESOTA DEPARTMENT OF TRANSPORTATION RECORDS SHOW THEY FOUND THE STONE WITH THE "+" CUT IN IT IN THEIR SURVEY FOR STATE HIGHWAY NO. 47 IN 1941. THEIR RECORDS SHOW THEY REPLACED THE STONE WITH A CONCRETE MONUMENT WITH A DISK IN THE TOP IN 1953.

ON MAY 28, 1985, M.B. RUDE FOUND A 26" PINE STUMP PER HANDSCHU'S RECORDS AND AT 47.9 FEET SOUTHWEST OF THE PINE STUMP HE FOUND THE DEPARTMENT OF TRANSPORTATION'S CONCRETE MONUMENT WITH THE DISK 4" BELOW THE SURFACE. HE SET THIS CORNER WITH A 3" BY 2" IRON PIPE ON TOP OF THE DISK.

IN JULY 2006 E.G. RUD AND SONS FOUND THE MINNESOTA HIGHWAY DEPARTMENT MONUMENT AND ESTABLISHED KANABEC COUNTY COORDINATES ON THIS CORNER USING G.P.S. EQUIPMENT.