

CERTIFICATE OF LOCATION OF GOVERNMENT CORNER

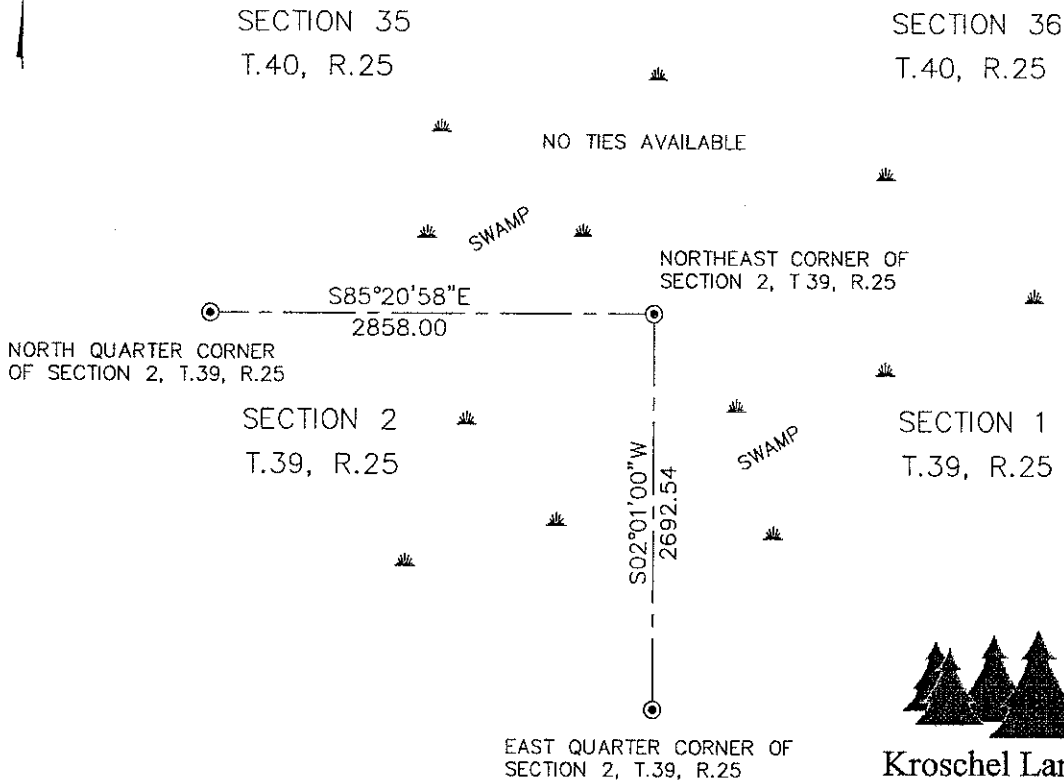
Northeast Corner of Section 2, Township 39, Range 25,
4th Principal Meridian, Kanabec County, State of Minnesota

At the corner location shown on the sketch:
On 9/21/2009 set a 1/2" x 72" Iron Pipe with
Plastic Cap marked RLS 44490.

Kanabec County U.S. Survey Feet Coordinates
NAD 1983, HARN 1996 Adjustment
Obtained by RTK GPS observation
Northing: 164041.4813
Easting: 370051.2487

Note: NAD 1983, HARN 1996 Adjustment
coordinates are NOT compatible with
NAD 1983 coordinates
Note: 1 Meter = 3937/1200 U.S. Survey Feet

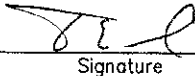
SKETCH OF REFERENCE TIES



Kroschel Land Surveyors, Inc.
1639 Main Street North, Suite 6, Pine City, MN 55063
Phone: 320-629-3267 Fax: 320-629-0176

Statement of evidence relative to this corner location is on back of page.

I hereby certify that this document and
the data contained herein was prepared
by me or under my direct supervision.


Signature

12-29-2009
Date

License No. 44490

- Land Surveyor
- Professional Engineer
- County Surveyor
- County Engineer

OFFICE OF THE COUNTY RECORDER

County of Kanabec

I hereby certify that this document was filed in the
County Recorders office at _____ .M. on the
_____ day of _____ A.D., 20____

County Recorder _____
By _____, Deputy

DOCUMENT NO. _____

Statement of Evidence:

In November of 1849, Deputy Surveyor Theo Conkey set a post to mark the Northeast Corner of Section 2, Township 39 North, Range 25 West, 4th Principal Meridian.

Reference ties were taken to:

- 10 inch Tamarack at North 18 degrees East a distance of 18 links
- 10 inch Tamarack at North 34 degrees West a distance of 64 links
- 8 inch Tamarack at South 78 degrees East a distance of 4 links
- 14 inch Tamarack at South 25 degrees West a distance of 25 links

All of the original Government corner evidence was searched for. None was found.

1909—County Surveyor John Nelson ran a road survey in Section 2, T.39, R.25. The map of the survey shows a stake at the Northeast corner of Section 2 and a distance of 2694.78 feet along the north line of the Northeast Quarter of Section 2.

1910—County Surveyor John Nelson ran a road survey along the north lines of Sections 1 and 2, T.39, R.25. He found a monument at the Northeast corner of Section 2, but he does not state exactly what he found. He measured a distance of 5389.56 feet across the north line of Section 1. The map of his survey shows a "stake in swamp" at the corner location.

1940±—A section map by Chas. Handschu, RLS 464 of Section 2, T.39, R.25 shows a distance of 2858 feet from the North Quarter corner to the Northeast corner of Section 2. It also shows a distance of 2695.1 feet from the East Quarter corner to the Northeast corner of Section 2. The map shows a post near the Northeast corner of Section 2.

1948—The plat of Forest Shores on Ann Lake is surveyed by County Surveyor M.W. Griffith in Section 35, T.40, R.25. The plat shows the Southwest corner of Section 36, T.40, R.25, but does not give any distance to it.

1964—The Minnesota Conservation Department made a survey in the Southwest Quarter of Section 36, T.40, R.25. The survey shows an iron pipe set at the Southwest corner of the Southeast Quarter of the Southwest Quarter of Section 36. It shows a distance of 1352 feet along the south line of the Southeast Quarter of the Southwest Quarter of Section 36. We searched for and found the DNR's monuments from this survey. We were able to compute a position for the Northeast corner of Section 2 using their monumentation and distances.

1985—County Surveyor M.B. Rude, RLS 8195 surveyed the plat of Auditor's Subdivision No. 20 in Section 2, T.39, R.25. The plat shows a section breakdown with the same computed dimension along the north line of the Northeast Quarter of Section 2 as Chas. Handschu's 1940 survey. No monument was set.

1986—County Surveyor M.B. Rude, RLS 8195 surveyed the plat of Auditor's Subdivision No. 21 in Section 2, T.39, R.25. The plat shows a section breakdown with the same computed dimension along the north line of the Northeast Quarter of Section 2 as Chas. Handschu's 1940 survey. No monument was set.

2007—County Surveyor Ernie Rud, RLS 9808 filed a corner certificate for the North Quarter corner of Section 1, T. 39, R.25. He set his monument at a lost position using M.B. Rude's computed location for the Northeast corner of Section 2.

In September 2009, a survey was made around Section 2, Township 39 North, Range 25 West, 4th Principal Meridian for Howard Clark to locate existing monuments, lines of occupation and establish search areas.

On 9/21/2009 we made a search with a magnetic locator. No evidence of the corner was found. There is an old road bed to the east and west of this corner, but it's exact location near this corner is difficult to determine, as the area is very wet and swampy. I accepted the computed location used by Ernie Rud, M.B. Rude and Chas. Handschu as the best available evidence of the original corner location. This location fits John Nelson's 1910 distance along the north line of Section 1 within 12 feet. The DNR's computed position fits Nelson's distance within 18 feet. I set a 1/2" x 72" Iron Pipe with plastic cap marked RLS 44490 at the corner location. Assigned Kanabec County coordinates.



Kroschel Land Surveyors, Inc.

1639 Main Street North, Suite 6, Pine City, MN 55063
Phone: 320-629-3267 Fax: 320-629-0176