

# CERTIFICATE OF LOCATION OF GOVERNMENT CORNER

*EAST*  
~~WEST~~ QUARTER Corner of Section 12, Township 39, Range 25, 4TH P.M.  
 STATE OF MINNESOTA, County of KANABEC

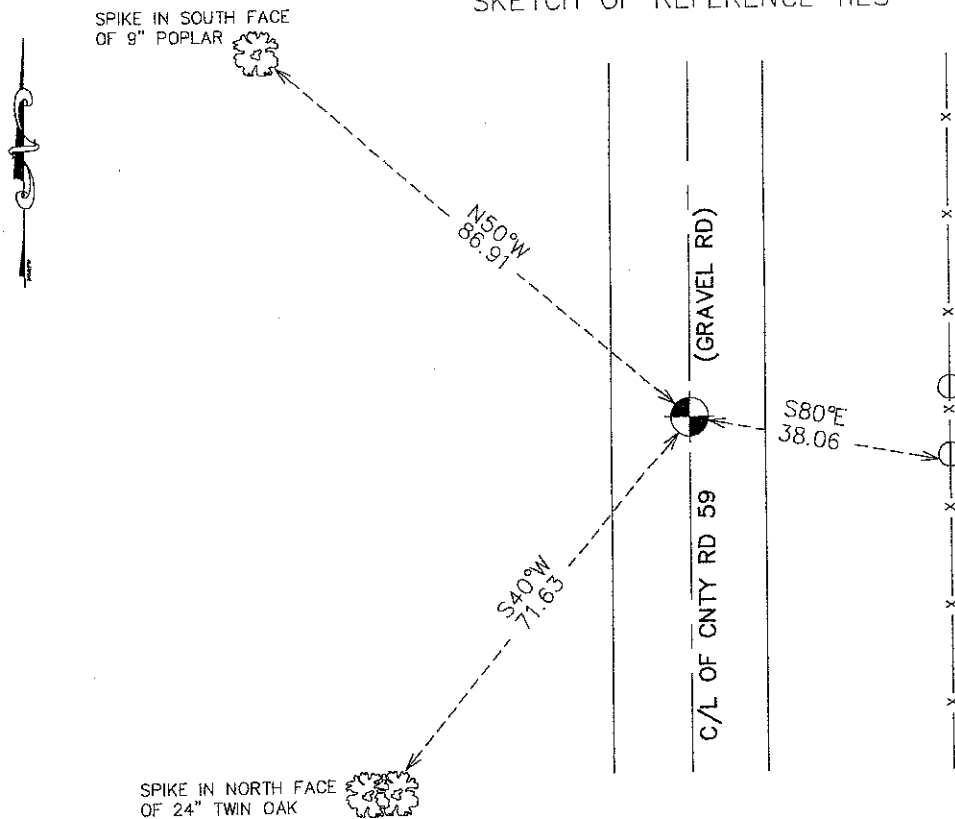
At the corner location shown on the sketch:  
 ON 11/1/2010 SET A 1/2" IRON PIPE WITH CAP MARKED RLS 9808.

Kanabec County U.S. Survey Feet Coordinates  
 NAD 1983, HARN 1996 Adjustment  
 Obtained by RTK GPS Observation

Northing= 155887.31  
 Easting= 375417.11

Note: NAD 1983, HARN 1996 Adjustment  
 coordinates are NOT compatible with  
 NAD 1983 coordinates  
 Note: 1 Meter=3937/1200 U.S. Survey Feet

## SKETCH OF REFERENCE TIES



Statement of evidence relative to this corner location is on back of page.

I hereby certify that this document and the data contained herein was prepared by me or under my direct supervision.

*Ernest J. Blund*                      12-23-10  
 Signature                                      Date

Registration No. 9808

- Land Surveyor,             Professional Engineer  
 County Surveyor,         County Engineer

### OFFICE OF THE COUNTY RECORDER

County of \_\_\_\_\_

I hereby certify that this document was filed in the County Recorder's office at \_\_\_\_\_ M. on the \_\_\_\_\_ day of \_\_\_\_\_ A.D., 20\_\_\_\_

County Recorder \_\_\_\_\_  
 BY \_\_\_\_\_ Deputy

**DOCUMENT NO.** \_\_\_\_\_

W1/4 CORNER, SEC. 7, T39, R24  
E1/4 CORNER, SEC. 12, T39, R25

**STATEMENT OF EVIDENCE**

**THE ORIGINAL CORNER WAS SET BY DEPUTY SURVEYOR SILAS BARNARD ON SEPT. 14, 1849 AND 2 BEARING TREES NOTED AS:**

**12" SUGAR MAPLE @ 49 LINKS BEARING N47°E  
12" LINDEN MAPLE @ 31 LINKS BEARING S87°W**

**NO VISIBLE EVIDENCE REMAINS TODAY FOR THE CORNER OR THE BEARING TREES.**

**THERE IS A ROAD OPENING ON FILE AT THE COUNTY AUDITOR'S OFFICE DATED OCT. 18, 1914, BUT NO SURVEY ATTACHED.**

**NO RECORDS OF ANY SUBSEQUENT SURVEYS ALONG THIS LINE COULD BE FOUND AT THE COUNTY SURVEYOR'S OFFICE.**

**IN SEPT. 2007, E.G. RUD AND SONS, INC. RAN A SURVEY ALONG THIS LINE TO LOCATE MONUMENTATION, LINES OF OCCUPATION AND DETERMINE SEARCH AREAS. THIS CORNER FALLS IN THE CENTERLINE OF A NORTH-SOUTH GRAVEL ROAD. THE OWNERSHIP IN SEC. 7 IS COMMON IN THE NW1/4 AND SW1/4 WITH NO OCCUPATION LINE. IN SEC. 12 THERE ARE 2 LINES OF OCCUPATION, ONE WHICH IS NORTH AND ONE SOUTH OF A LINE AND SPLIT. THREE EXCAVATIONS WERE MADE WITH THE COUNTY BACKHOE, ONE AT THE LINE AND SPLIT AND ONE AT EACH LINE OF OCCUPATION, BUT NO EVIDENCE WAS FOUND. THEREFORE WE SET A MONUMENT ON LINE AND EQUIDISTANT BETWEEN THE NW AND SW CORNERS OF SEC. 7. TIES WERE TAKEN AND KANABEC COUNTY COORDINATES WERE ESTABLISHED ON THIS POSITION.**