

# CERTIFICATE OF LOCATION OF GOVERNMENT CORNER

NE  
~~SOUTHWEST~~ Corner of Section 13, Township 39, Range 25, 4TH P.M.

STATE OF MINNESOTA, County of KANABEC

At the corner location shown on the sketch:  
ON 11/1/10 FOUND CAST ALUMINUM MONUMENT (BADLY CORRODED)

Kanabec County U.S. Survey Feet Coordinates  
NAD 1983, HARN 1996 Adjustment  
Obtained by RTK GPS Observation

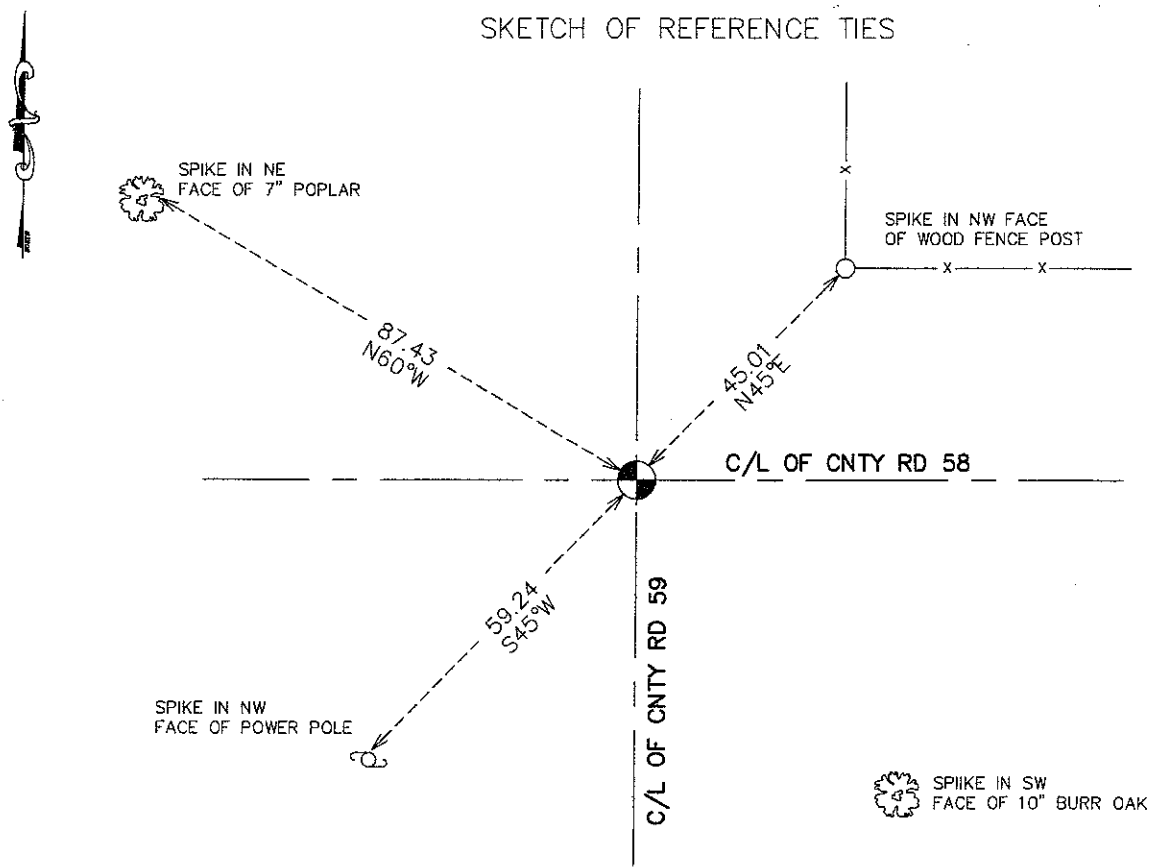
Northing= 153306.128

Easting= 375418.391

Note: NAD 1983, HARN 1996 Adjustment  
coordinates are NOT compatible with  
NAD 1983 coordinates

Note: 1 Meter=3937/1200 U.S. Survey Feet

## SKETCH OF REFERENCE TIES



Statement of evidence relative to this corner location is on back of page.

I hereby certify that this document and the data contained herein was prepared by me or under my direct supervision.

Ernest Rud  
Signature

11-26-2010  
Date

Registration No. 9808

- Land Surveyor,     Professional Engineer  
 County Surveyor,     County Engineer

### OFFICE OF THE COUNTY RECORDER

County of \_\_\_\_\_

I hereby certify that this document was filed in the County Recorder's office at \_\_\_\_\_ M. on the

\_\_\_\_\_ day of \_\_\_\_\_ A.D., 20\_\_

County Recorder \_\_\_\_\_

BY \_\_\_\_\_ Deputy

**DOCUMENT NO.** \_\_\_\_\_

SW CORNER, SEC. 7, T39, R24

**STATEMENT OF EVIDENCE**

**SEPT. 14, 1849**

**ORIGINAL GOV'T POST ST ON TOWNSHIP LINE. 4 BEARING TREES ESTABLISHED:**

**12" SUGAR MAPLE @ 16 LINKS BEARING N71°W**

**11" ELM @ 33 LINKS BEARING S42.5°W**

**12" POPLAR @ 31 LINKS BEARING S14°E**

**15" BUTTERNUT @ 33 LINKS BEARING N25°E**

**NO EVIDENCE OF POST OR BEARING TREES REMAIN**

**JUNE 26, 1902**

**ROAD OPENING ALONG WEST SIDE OF SEC. 18 FILED IN COUNTY AUDITOR'S OFFICE. JOHN NELSON MEASURED THE WEST LINE OF SEC. 18 TO BE 80.2 CHAINS.**

**OCT. 20, 1975**

**M.B. RUDE FOUND A SANDSTONE WITH A CHISELED "X" AT THE INTERSECTION OF THE N-S CENTERLINE AND THE E-W CENTERLINE OF ROADS. M.B. RUDE SET A CAST ALUMINUM MONUMENT WITH MAGNETS AND TOOK TIES RECORDED ON CERTIFICATE OF LOCATION NO. 355**

**NOV. 2, 2010**

**E.G. RUD AND SONS, INC. FOUND CAST ALUMINUM MONUMENT DOWN 8" IN THE CENTERLINE OF ROADS. NEW TIES TAKEN AND KANABEC COUNTY COORDINATES ESTABLISHED ON THIS POSITION.**