

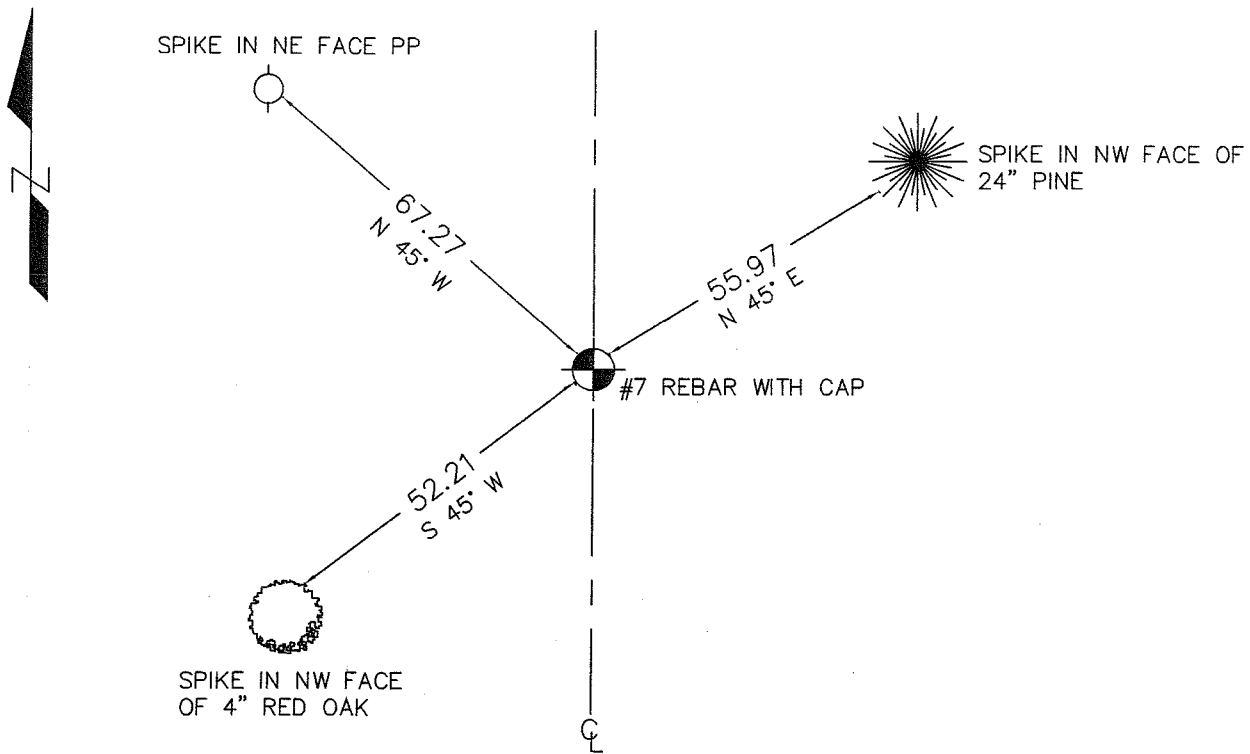
# CERTIFICATE OF LOCATION OF GOVERNMENT CORNER

*West 1/4* CORNER OF SECTION 19, TOWNSHIP 39, RANGE 24, 4TH PM.

STATE OF MINNESOTA, COUNTY OF KANABEC

AT THE CORNER LOCATION SHOWN ON THE SKETCH:  ON 05/ /04 SET KANABEC COUNTY MONUMENT	KANABEC COUNTY U.S. SURVEY FEET COORDINATES NAD 1983, HARN 1996 ADJUSTMENT OBTAINED BY RTK GPS OBSERVATION  NOTE: NAD 1983, HARN 1996 ADJUSTMENT COORDINATES ARE NOT COMPATIBLE WITH NAD 1983 COORDINATES  NOTE: 1 METER = $\frac{3937}{1200}$ U.S. SURVEY FEET
	NORTHING = <u>145339.32</u>  EASTING = <u>375356.95</u>

## SKETCH OF REFERENCE TIES



STATEMENT OF EVIDENCE RELATIVE TO THIS CORNER LOCATION IS ON THE BACK OF THIS PAGE

I HEREBY CERTIFY THAT THIS DOCUMENT AND THE DATA CONTAINED HEREIN WAS PREPARED BY ME OR UNDER MY DIRECT SUPERVISION.

*Ernest Shred*

SIGNATURE

11-18-2005

DATE

REGISTRATION NO.

*Minn. No 9808*

- LAND SURVEYOR     COUNTY SURVEYOR  
 PROF. ENGINEER     COUNTY ENGINEER

OFFICE OF THE COUNTY RECORDER

COUNTY OF \_\_\_\_\_

I HEREBY CERTIFY THAT THIS DOCUMENT WAS FILED IN THE COUNTY RECORDER'S OFFICE AT \_\_\_\_\_ M. ON THE \_\_\_\_\_ DAY OF \_\_\_\_\_, 2\_\_\_\_\_.

COUNTY RECORDER \_\_\_\_\_

BY \_\_\_\_\_, DEPUTY

DOCUMENT NO. \_\_\_\_\_

## STATEMENT OF EVIDENCE

This corner was set by Deputy Surveyor Silas Barnard in July of 1855. Evidence of the corner post or bearing trees no longer remain. There are no surveys on record at the County Offices. In November 2003, we ran a survey around Section 24, 25, and 26 to locate existing monumentation and tie in lines of occupation. There were no lines of occupation at this corner, which falls on the centerline of a north-south gravel road. At the  $\frac{1}{4}$  corners north and south of this quarter corner were old fences. We doubled these distances down to the quarter corner from these fences and the two locations fell within 0.5 feet of each other. We set this corner on line between the Northeast and Southeast corners of Section 24 and at the doubled distances.

In May 2004, we excavated an area 9' by 20' by 3' deep. No evidence was found. We set a Kanabec County monument, took ties and established Kanabec County coordinates on the position.