

# CERTIFICATE OF LOCATION OF GOVERNMENT CORNER

WEST QUARTER Corner of Section 30 , Township 39 , Range 24 , 4TH P.M.  
EAST QUARTER Corner of Section 25 , Township 39 , Range 25 , 4TH P.M.

STATE OF MINNESOTA, County of KANABEC

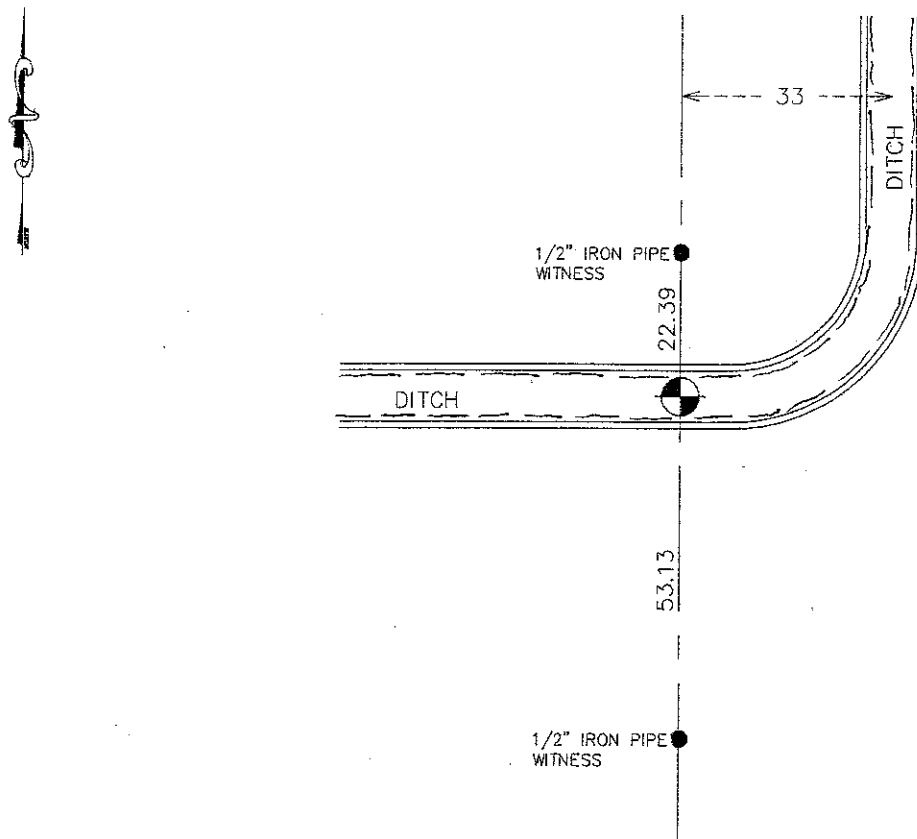
At the corner location shown on the sketch:  
ON 1/1/2004 SET A 1/2" BY 4' IRON PIPE IN  
CENTERLINE OF DITCH.

Kanabec County U.S. Survey Feet Coordinates  
NAD 1983, HARN 1996 Adjustment  
Obtained by RTK GPS Observation

Northing= 140021.755  
Easting= 375345.546

Note: NAD 1983, HARN 1996 Adjustment  
coordinates are NOT compatible with  
NAD 1983 coordinates  
Note: 1 Meter=3937/1200 U.S. Survey Feet

SKETCH OF REFERENCE TIES



Statement of evidence relative to this corner location is on back of page.

I hereby certify that this document and the data contained herein was prepared by me or under my direct supervision.

Ernest Rud 7-18-2011  
Signature Date

Registration No. 9808

Land Surveyor, [ ] Professional Engineer  
[ ] County Surveyor, [ ] County Engineer

## OFFICE OF THE COUNTY RECORDER

County of \_\_\_\_\_

I hereby certify that this document was filed in the County Recorder's office at \_\_\_\_\_ M. on the

\_\_\_\_\_ day of \_\_\_\_\_ A.D., 20\_\_\_\_

County Recorder \_\_\_\_\_

BY \_\_\_\_\_ Deputy

DOCUMENT NO. \_\_\_\_\_

W1/4 CORNER, SEC. 30, T39, R24  
E1/4 CORNER, SEC. 25, T39, R25

**STATEMENT OF EVIDENCE**

**STATEMENT OF EVIDENCE**

THE ORIGINAL GOVERNMENT POST WAS SET ON SEPT. 14, 1849 AND 2 BEARING TREES NOTED AS:

12" PINE @ 700 LINKS BEARING S5°W  
11" PINE @ 670 LINKS BEARING S2.5°E

NO VISIBLE EVIDENCE REMAINS FOR THE POST OR BEARING TREES.

THERE IS A ROAD OPENING DATED SEPT. 27, 1895 ON FILE AT THE COUNTY AUDITOR'S OFFICE RUNNING FROM THE SW CORNER OF SEC. 31 TO THE W1/4 CORNER OF SEC. 31. NELS SJODINE JR. SIGNED AS SURVEYING THIS 1.5 MILES BUT DOESN'T SHOW DISTANCES OR IF MONUMENTS WERE SET.

ON PAGE 262 OF BOOK A OF SURVEYS AN UNDATED SURVEY BY T.B. VICKEREY IS FILED FOR A ROAD OPENING FROM THE NW CORNER OF SEC. 31 , T39, R24 TO SW CORNER OF SEC. 6, T38, R24.

IN BOOK A OF SURVEYS, PAGE 258, A SURVEY OF THE W1/2 OF SEC. 30, T39, R24 BY T.B. VICKEREY IS FILED, DATE MARCH 1, 1900. THERE IS NO MENTION OF WHAT WAS SET AT ANY OF THE SECTION CORNERS.

MAPS OF COUNTY DITCH NO. 11 DATED MAY 10, 1917 AT THE COUNTY ENGINEER'S OFFICE SHOW THIS DITCH TO BE 33 FEET EAST OF THE SECTION LINE AND ON THE E-W QUARTER LINE OF SEC. 25.

IN JAN. 2004 E.G.RUD AND SONS, INC. RAN A SURVEY AROUND SEC. 25 AND 26 TO LOCATE LINES OF OCCUPATION AND EXISTING MONUMENTATION. THE NW CORNER OF SEC. 30 WAS SET BY M.B. RUDE AND THE SW CORNER WAS SET BY THE MN HWY DEPT. WE SET A POINT ON LINE AND EQUIDISTANT BETWEEN THERE TWO CORNERS. THIS FELL IN THE E-W DITCH AND 33 FEET WEST OF THE N-S DITCH. A 1/2 INCH BY 4 FOOT PIPE WAS SET AT THIS LOCATION AND WITNESS CORNERS WERE SET NORTH AND SOUTH OF THE CORNER.