

CERTIFICATE OF LOCATION OF GOVERNMENT CORNER

NORTHEAST Corner of Section 36, Township 39, Range 25, 4TH P.M.
 STATE OF MINNESOTA, County of KANABEC

At the corner location shown on the sketch:

FOUND THIS MONUMENT
AND ESTABLISHED KANABEC COUNTY COORDINATES ON ITS LOCATION.

Kanabec County U.S. Survey Feet Coordinates
NAD 1983, HARN 1996 Adjustment
Obtained by RTK GPS Observation

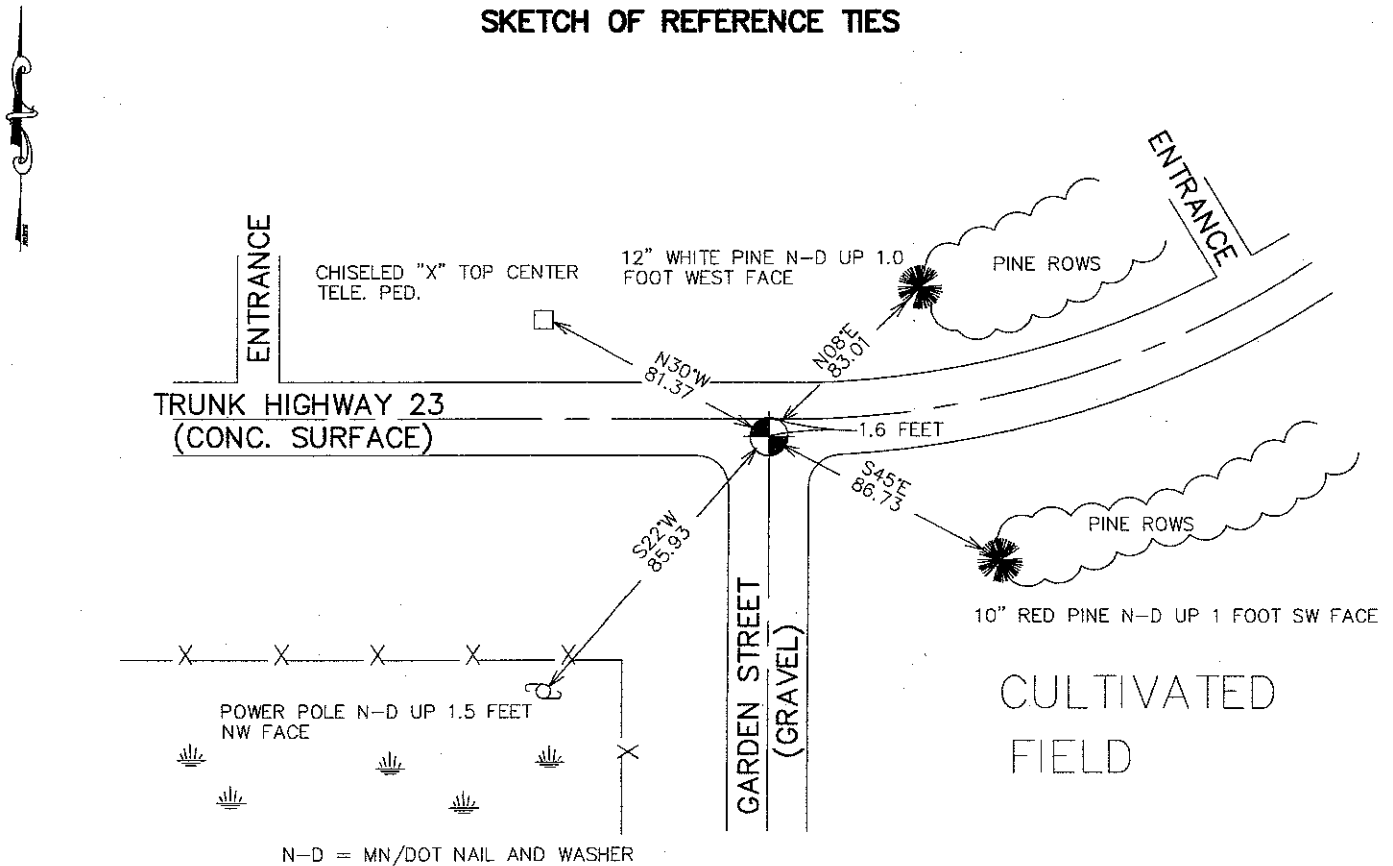
Northing= 137352.03

Easting= 375362.79

Note: NAD 1983, HARN 1996 Adjustment
coordinates are NOT compatible with
NAD 1983 coordinates

Note: 1 Meter=3937/1200 U.S. Survey Feet

SKETCH OF REFERENCE TIES



Statement of evidence relative to this corner location is on back of page.

I hereby certify that this document and the data contained herein was prepared by me or under my direct supervision.

Ernest Rud
Signature

11-25-2007
Date

Registration No. 9808

- Land Surveyor, Professional Engineer
 County Surveyor, County Engineer

OFFICE OF THE COUNTY RECORDER

County of _____

I hereby certify that this document was filed in the County Recorder's office at _____ M. on the _____ day of _____ A.D., 20____

County Recorder _____

BY _____ Deputy

DOCUMENT NO. _____

NORTHEAST CORNER SECTION 36, T39, R25

STATEMENT OF EVIDENCE

THE ORIGINAL PUBLIC LAND SURVEY WAS RUN IN 1851 BY MR. J. SMITH, DEPUTY SURVEYOR AND A WOOD POST WAS SET TO MARK THE CORNER. BEARING TIES WERE MADE TO FOUR PINES.

IN AN UNDATED SURVEY, FOR THE COUNTY BOARD, IN SURVEYOR'S RECORD BOOK A, PAGE 262, BY T.B. VICKERY, SURVEYOR, THE WEST LINES OF SECTIONS 31, T. 39N. R. 24W. AND SECTIONS 6 AND 7, T38N, R24W. WERE RUN IN. HE DID NOT SAY WHAT WAS FOUND OR SET FOR THE CORNERS.

IN 1901, FORMER COUNTY SURVEYOR, JOHN NELSON, MADE A TOWNSHIP ROAD ORDER SURVEY IN SECTION 31, T.39, R.24.

IN 1943, THE MINNESOTA DEPARTMENT OF TRANSPORTATION SHOWS THE CORNER AT P.O.S.T. 66.3 FEET AHEAD OF P.I. 742+28.3. "ASSUMED CORNER" AT INTERSECTIONS OF T.H. 23 AND A FENCE NORTH AND A ROAD SOUTH. IN BOOK NO. 6 OF ALIGNMENT FOR S.P. 3301-02 TH23 "LW" LINE FROM STATION 683+03.8 TO STATION 1014+11.2.

IN 1999-2002, THE MINNESOTA DEPARTMENT OF TRANSPORTATION MADE A SURVEY AROUND SECTION 36 TO LOCATE THE EXISTING MONUMENTS, LINES OF OCCUPATION, AND SEARCH AREAS. THIS CORNER FALLS NEAR THE INTERSECTION OF T.H. 23 AND GARDEN STREET SOUTH.

IN JANUARY, 2002, THE CORNER LOCATION WAS DETERMINED USING FOUND ALIGNMENT MONUMENTS AS SHOWN ON THE MINNESOTA DEPARTMENT OF TRANSPORTATION RIGHT OF WAY MAP FOR S.P. 3301, T.H. 23, INDEX FILE NO. 13-30. ON JANUARY 15, 2002, THE MINNESOTA DEPARTMENT OF TRANSPORTATION SET A 3/4" X 24" IRON PIN WITH AN ALUMINUM CAP TO MARK THE CORNER. NEW REFERENCE TIES WERE MADE TO TWO PINE TREES, A POWER POLE, AND A TELEPHONE PEDESTAL. THE MINNESOTA DEPARTMENT OF TRANSPORTATION ACCEPTS THIS POSITION AS THE CORRECT LOCATION FOR THE CORNER.

FOR DETAILS AND SURVEY ANALYSIS, CONTACT THE MINNESOTA DEPARTMENT OF TRANSPORTATION DISTRICT SURVEYS OFFICE IN BAXTER, MINNESOTA.

IN 2005, E.G. RUD AND SONS ESTABLISHED KANABEC COUNTY COORDINATES ON THIS CORNER.