

CERTIFICATE OF LOCATION OF GOVERNMENT CORNER

EAST QUARTER Corner of Section 36, Township 39, Range 25, 4TH P.M.
 STATE OF MINNESOTA, County of KANABEC

At the corner location shown on the sketch:

FOUND THIS MONUMENT
 AND ESTABLISHED KANABEC COUNTY COORDINATES ON ITS LOCATION.

Kanabec County U.S. Survey Feet Coordinates
 NAD 1983, HARN 1996 Adjustment
 Obtained by RTK GPS Observation

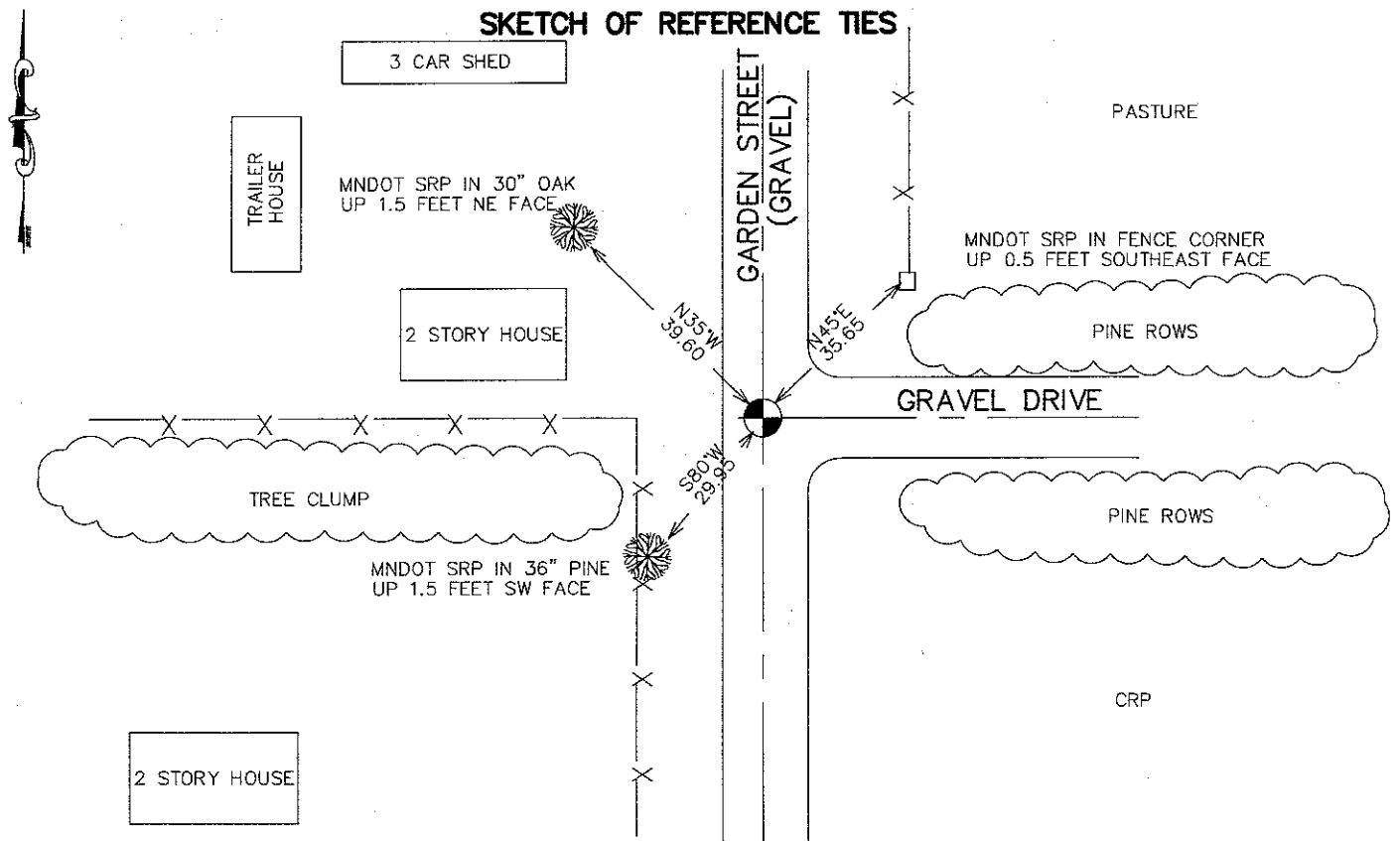
Northing= 134726.47

Easting= 375347.78

Note: NAD 1983, HARN 1996 Adjustment
 coordinates are NOT compatible with
 NAD 1983 coordinates

Note: 1 Meter=3937/1200 U.S. Survey Feet

SKETCH OF REFERENCE TIES



Statement of evidence relative to this corner location is on back of page.

I hereby certify that this document and the data contained herein was prepared by me or under my direct supervision.

Ernest Rud 11-25-2007
 Signature Date

Registration No. 9808

Land Surveyor, Professional Engineer
 County Surveyor, County Engineer

OFFICE OF THE COUNTY RECORDER

County of _____

I hereby certify that this document was filed in the County Recorder's office at _____ M. on the _____ day of _____ A.D., 20____

County Recorder _____

BY _____ Deputy

DOCUMENT NO. _____

EAST QUARTER CORNER SECTION 36, T39, R25

STATEMENT OF EVIDENCE

THE ORIGINAL PUBLIC LAND SURVEY WAS RUN IN 1849 BY MR. J. SMITH, DEPUTY SURVEYOR, AND A WOOD POST WAS SET TO MARK THE CORNER. BEARING TREES WERE MADE TO TWO SUGAR MAPLES.

IN AN UNDATED SURVEY, FOR THE COUNTY BOARD, IN SURVEYOR'S RECORD BOOK A, PAGE 262, BY T.B. VICKERY, SURVEYOR, THE WEST LINE OF SECTION 31, T.39, R.24 AND SECTIONS 6 AND 7, T.38, R.24, WERE RUN IN. HE DID NOT SAY WHAT WAS FOUND OR SET FOR THE CORNERS.

IN 1999-2002, THE MINNESOTA DEPARTMENT OF TRANSPORTATION MADE A SURVEY AROUND SECTION 36 TO LOCATE THE EXISTING MONUMENTS, LINES OF OCCUPATION, AND SEARCH AREAS. THIS CORNER FALLS ON THE CENTERLINE OF NORTH-SOUTH GARDEN STREET, AND A FENCE LINE WEST.

ON NOVEMBER 16, 1999, THE MINNESOTA DEPARTMENT OF TRANSPORTATION EXCAVATED AND RECOVERED A SANDSTONE, DOWN 1.1 FEET, AND SET A CAST IRON MONUMENT ON TOP OF THE FOUND STONE TO MARK THE CORNER. THE TOP OF THE CAST IRON MONUMENT IS DOWN 0.5 FEET. NEW BEARING TIES WERE MADE TO AN OAK TREE, A PINE TREE, AND A FENCE POST. THE MINNESOTA DEPARTMENT OF TRANSPORTATION ACCEPTS THIS POSITION AS THE CORRECT LOCATION FOR THE CORNER.

FOR DETAILS AND SURVEY ANALYSIS, CONTACT THE MINNESOTA DEPARTMENT OF TRANSPORTATION DISTRICT SURVEYS OFFICE IN BAXTER, MINNESOTA.

IN 2006, E.G. RUD AND SONS ESTABLISHED KANABEC COUNTY COORDINATES ON THIS CORNER.