

CERTIFICATE OF LOCATION OF GOVERNMENT CORNER

NORTH QUARTER Corner of Section 7, Township 41, Range 24, 4TH P.M.

STATE OF MINNESOTA, County of KANABEC

At the corner location shown on the sketch:
On 05/07/2003 Set a Kanabec County Monument.

Kanabec County U.S. Survey Feet Coordinates
NAD 1983, HARN 1996 Adjustment
Obtained by RTK GPS Observation

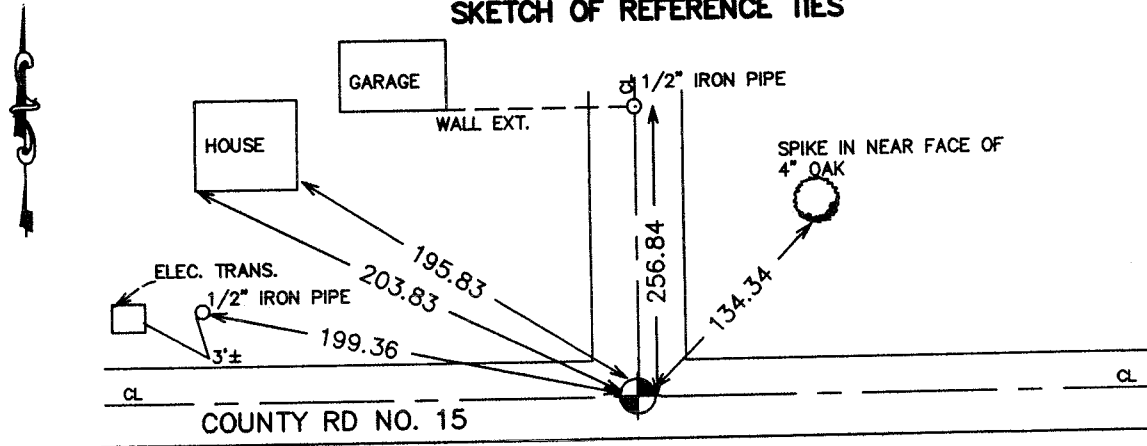
Northing= 218682.87

Easting= 367776.39

Note: NAD 1983, HARN 1996 Adjustment
coordinates are NOT compatible with
NAD 1983 coordinates

Note: 1 Meter=3937/1200 U.S. Survey Feet

SKETCH OF REFERENCE TIES



Statement of evidence relative to this corner location is on back of page.

I hereby certify that this document and the data contained herein was prepared by me or under my direct supervision.

Ernst Hrud
Signature

9-1-2004
Date

Registration No. 9808

Land Surveyor, Professional Engineer

County Surveyor, County Engineer

OFFICE OF THE COUNTY RECORDER

County of _____

I hereby certify that this document was filed in the County Recorder's office at _____ M. on the

_____ day of _____ A.D., 20__

County Recorder _____

BY _____ Deputy

DOCUMENT NO. _____

STATEMENT OF EVIDENCE

FROM TIE SHEET 864

All of the original government bearing trees are now gone.

There is a Town Board Road Order dated July 31, 1915, on file at the County Auditor's Office for a town road beginning at the south quarter post of Section 6, Township 41, Range 24; thence running north on the north-south quarter line of Section 6, Township 41, Range 24.

On November 11, 1992, we made a survey along the north line of Section 7, Township 41, Range 24, and adjoining sections to locate the existing monuments, lines of occupation, and establish search areas. There is an east-west county road and townroad north at this corner.

On November 23, 1992, we made a 4.5' by 15' by 15' excavation with a backhoe at the centerline intersection of County Road No. 15 and township road north. We found no evidence of the corner in the excavation.

The center line intersection of County Road No. 15 and the township road north, per the town road order, was accepted as the perpetuated location of the original corner location.

On May 7, 2003, we set a Kanabec County Monument using ties and survey by M.B. Rude dated 12-7-92 for the Kanabec County Highway Department. We established Kanabec County Coordinates using GPS equipment.