

# CERTIFICATE OF LOCATION OF GOVERNMENT CORNER

NORTH QUARTER Corner of Section 8, Township 41, Range 24, 4TH P.M.  
 STATE OF MINNESOTA, County of KANABEC

At the corner location shown on the sketch:  
 On 05/07/2003 Set a Kanabec County Monument.

Kanabec County U.S. Survey Feet Coordinates  
 NAD 1983, HARN 1996 Adjustment  
 Obtained by RTK GPS Observation

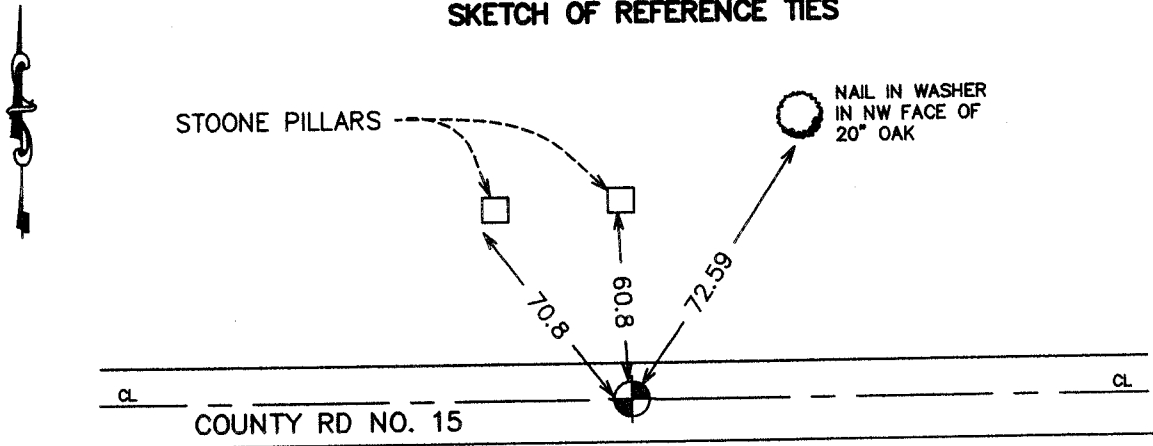
Northing= 218822.95

Easting= 373040.35

Note: NAD 1983, HARN 1996 Adjustment  
 coordinates are NOT compatible with  
 NAD 1983 coordinates

Note: 1 Meter=3937/1200 U.S. Survey Feet

### SKETCH OF REFERENCE TIES



Statement of evidence relative to this corner location is on back of page.

I hereby certify that this document and the data contained herein was prepared by me or under my direct supervision.

Ernest Alud 9-2-2004  
Signature Date

Registration No. 9808

Land Surveyor,  Professional Engineer

County Surveyor,  County Engineer

### OFFICE OF THE COUNTY RECORDER

County of \_\_\_\_\_

I hereby certify that this document was filed in the County Recorder's office at \_\_\_\_\_ M. on the \_\_\_\_\_ day of \_\_\_\_\_ A.D., 20\_\_\_\_

County Recorder \_\_\_\_\_

BY \_\_\_\_\_ Deputy

DOCUMENT NO. \_\_\_\_\_

# STATEMENT OF EVIDENCE

FROM TIE SHEET 866

All of the original government bearing trees are now gone.

There is a Road Petition dated April 29, 1899, on file at the County Auditor's Office for a town road beginning at the north quarter corner of Section 9, Township 41, Range 24; thence running west along the north line of Section 9, 8, and 7, to the intersection of the Mora and Mill Lacs Lake Road.

On November 11, 1992, we made a survey along the north line of Section 7, Township 41, Range 24, and adjoining sections to locate the existing monuments, lines of occupation, and establish search areas. There is an east-west county road and town road north at this corner.

We found a 1/2" iron pipe at the center line of County Road No. 15 and extension of a survey line north with a metal detector.

Jeff Caine, a Land Surveyor, in a survey in Section 5, set the 1/2" pipe on October 11, 1989, after making a 4' by 16' by 30' excavation and found no evidence of this corner. His notes show that he set the 1/2" iron pipe at the center line of the road and old fence line north, extended south.

We accepted the 1/2" iron pipe as the perpetuated location of the original corner location and it is in harmony with the town road order.

On May 7, 2003, we set a Kanabec County Monument using ties and mathematical information on survey by M.B. Rude dated 12-7-92 for the Kanabec County Highway Department. We established Kanabec County Coordinates using GPS equipment.