

CERTIFICATE OF LOCATION OF GOVERNMENT CORNER

NORTHEAST Corner of Section 7, Township 41, Range 24, 4TH P.M.

STATE OF MINNESOTA, County of KANABEC

At the corner location shown on the sketch:
On 05/07/2003 Set a Kanabec County Monument.

Kanabec County U.S. Survey Feet Coordinates
NAD 1983, HARN 1996 Adjustment
Obtained by RTK GPS Observation

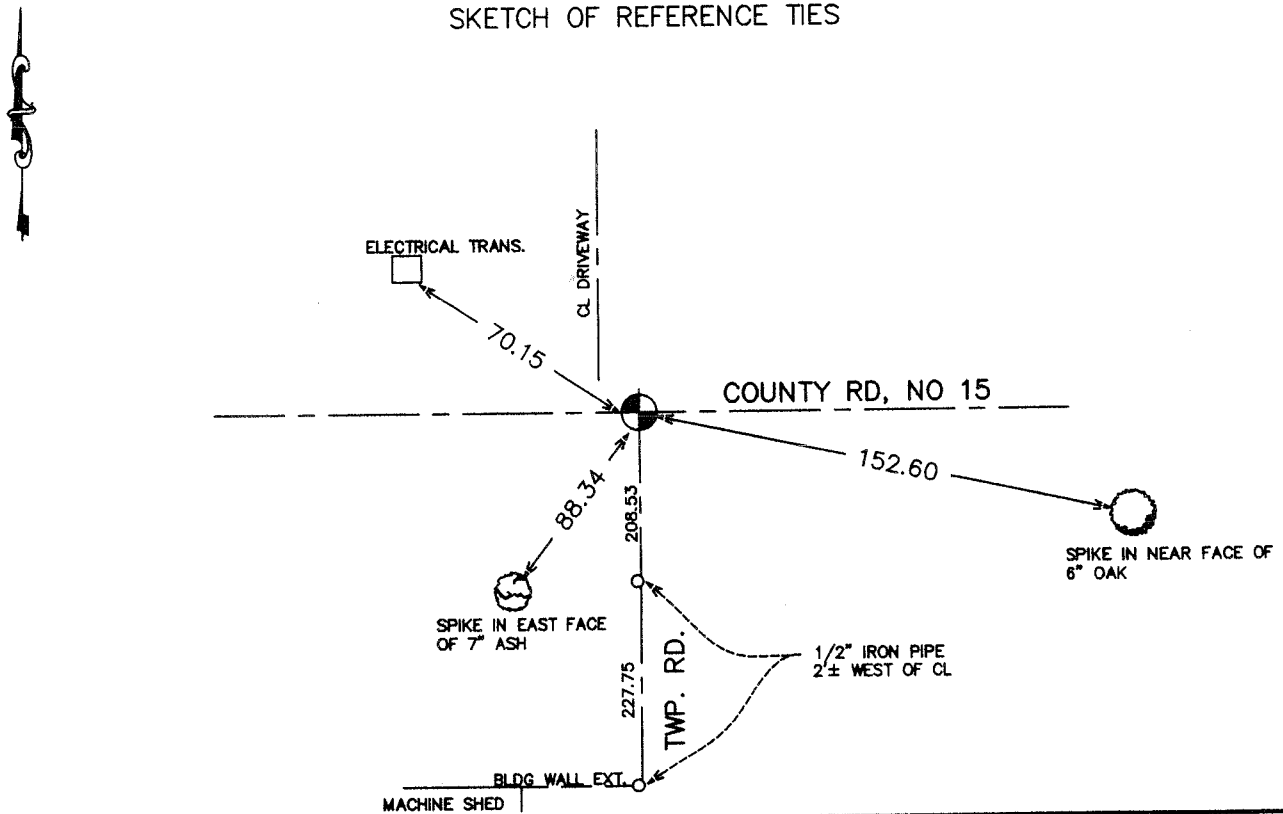
Northing= 218878.625

Easting= 370406.524

Note: NAD 1983, HARN 1996 Adjustment
coordinates are NOT compatible with
NAD 1983 coordinates

Note: 1 Meter=3937/1200 U.S. Survey Feet

SKETCH OF REFERENCE TIES



Statement of evidence relative to this corner location is on back of page.

I hereby certify that this document and the data contained herein was prepared by me or under my direct supervision.

Ernest J. Rud
Signature

7-28-2004
Date

Registration No. 9808

Land Surveyor, Professional Engineer

County Surveyor, County Engineer

OFFICE OF THE COUNTY RECORDER

County of _____

I hereby certify that this document was filed in the County Recorder's office at _____ M. on the _____ day of _____ A.D., 20 _____

_____ day of _____ A.D., 20 _____

County Recorder _____

BY _____ Deputy

DOCUMENT NO. _____

STATEMENT OF EVIDENCE

(FROM TIE SHEET 867)

All of the original government bearing trees are now gone.

There is a road petition dated April 29, 1899, on file in the County Auditor's Office for a town road beginning at the north quarter corner of Section 9, Township 41, Range 24; thence running west along the north lines of Sections 9, 8, and 7, to the intersection of the Mora and Mille Lacs Lake road.

There is a Surveyor's Report dated October 11, 1925, by George H. Jenks, a former surveyor, on file at the County Recorder's Office which states that he found a stone marked with a "+" at the northeast corner of Section 7, Township 41, Range 24, Certificate No. 102.

There is a town road order on file at the County Auditor's Office which calls for a stone with a "+" at this corner and a town road to run south on the section line, surveyed by George Jenks, dated December 3, 1925.

On November 11, 1992, we made a survey along the north line of Section 7, Township 41, Range 24 and adjoining sections to locate existing monuments, lines of occupation and establish search areas. There is an east-west County Highway and town road south at this corner.

We found a 1/2" iron pipe at the center line intersection of County Road No. 15 and township road south with a metal detector.

Jeff Caine, a land surveyor, in a survey of Section 5, set a 1/2" iron pipe on October 1989, after making a 4' by 10' by 12' excavation and found no evidence of the corner.

We accepted the 1/2" iron pipe as the perpetuated location of the original corner location as it is in harmony with the town road orders.

On May 7, 2003, we set a Kanabec County monument using ties and survey by MB Rude dated December 7, 1992 for Kanabec County Highway Department. We established Kanabec County coordinates using GPS equipment.