

CERTIFICATE OF LOCATION OF GOVERNMENT CORNER

EAST QUARTER Corner of Section 7, Township 41, Range 24, 4TH P.M.

STATE OF MINNESOTA, County of KANABEC

At the corner location shown on the sketch:
On 04/ /2004 Set a Kanabec County Monument.

Kanabec County U.S. Survey Feet Coordinates
NAD 1983, HARN 1996 Adjustment
Obtained by RTK GPS Observation

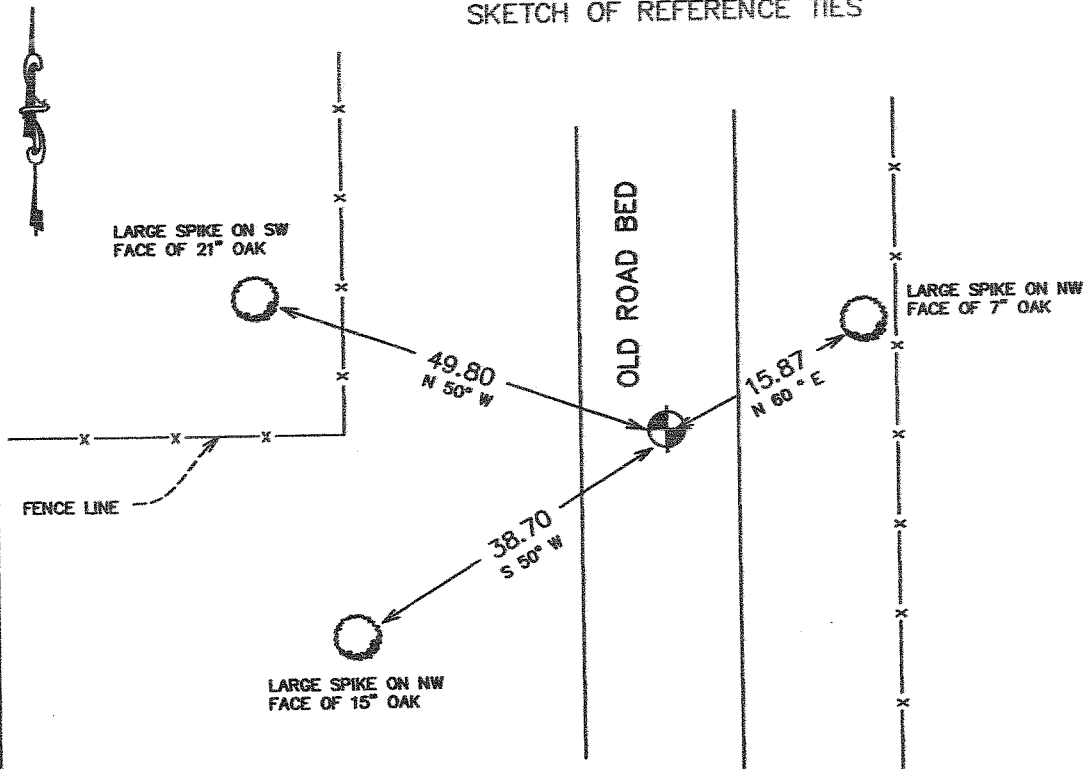
Northing= 216028.291

Easting= 370240.096

Note: NAD 1983, HARN 1996 Adjustment coordinates are NOT compatible with NAD 1983 coordinates

Note: 1 Meter=3937/1200 U.S. Survey Feet

SKETCH OF REFERENCE TIES



Statement of evidence relative to this corner location is on back of page.

I hereby certify that this document and the data contained herein was prepared by me or under my direct supervision.

Ernest J. Rud
Signature

7-19-04
Date

Registration No. 9808

- Land Surveyor, Professional Engineer
 County Surveyor, County Engineer

OFFICE OF THE COUNTY RECORDER

County of _____

I hereby certify that this document was filed in the County Recorder's office at _____ M. on the _____ day of _____ A.D., 20____

County Recorder _____

BY _____ Deputy

DOCUMENT NO. _____

STATEMENT OF EVIDENCE

E 1/4 COR SEC 7, T 41, R 24

The original corner was set by Deputy Surveyor Isaac A. Barber on January 3, 1856. Notes indicate a post was set with a 6" aspen and 7" Aspen as bearing trees. There is no evidence of the corner or bearing trees remaining.

In 1925, George ^{Jenks} ~~Jacobs~~ did a road survey along the east line of the Northeast Quarter and measured 2849 feet from the Northeast corner (stone) to a post at the East Quarter corner of Section 7.

On April 10, 2004, I talked to Roy and Judy Gibas, who own the Northeast Quarter of Section 7. He has owned the farm for 23 years, his father and grandfather owned it before then. The farm has been in the family since the early 1900's. He testified that the fence on the east property line was not on the section line and is actually west of the line. The section line is on the centerline of the town road and its south quarter extension.

(2004)

In April 13th 2004, we set this corner on the South ~~Quarter~~ extension of the road and the East ~~Quarter~~ extension of an old fence to the west. We measured 2855 feet to the Northeast corner in place today. *We measured 2853 feet to SE cor.*

We took ties and established Kanabec County coordinates on this position using G.P.S. equipment.