

CERTIFICATE OF LOCATION OF GOVERNMENT CORNER

NORTH QUARTER Corner of Section 18, Township 41, Range 24, 4TH P.M.

STATE OF MINNESOTA, County of KANABEC

At the corner location shown on the sketch:
On 06/22/2004 Set a Kanabec County Monument.

Kanabec County U.S. Survey Feet Coordinates
NAD 1983, HARN 1996 Adjustment
Obtained by RTK GPS Observation

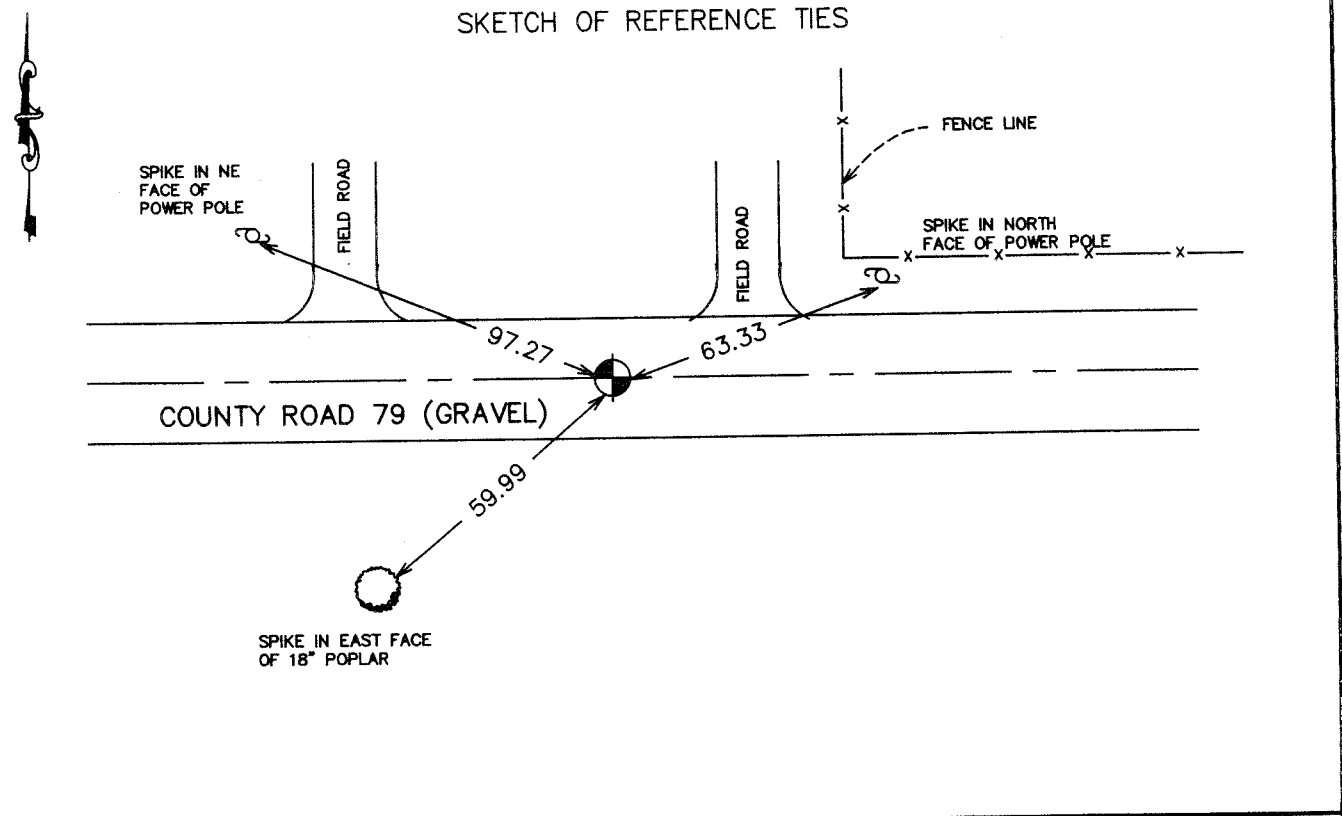
Northing= 213178.08

Easting= 367533.49

Note: NAD 1983, HARN 1996 Adjustment
coordinates are NOT compatible with
NAD 1983 coordinates

Note: 1 Meter=3937/1200 U.S. Survey Feet

SKETCH OF REFERENCE TIES



Statement of evidence relative to this corner location is on back of page.

I hereby certify that this document and the data contained herein was prepared by me or under my direct supervision.

Ernest Alred 8-04-2004
Signature Date

Registration No. 9808

- Land Surveyor, Professional Engineer
 County Surveyor, County Engineer

OFFICE OF THE COUNTY RECORDER

County of _____

I hereby certify that this document was filed in the County Recorder's office at _____ M. on the _____ day of _____ A.D., 20____

County Recorder _____

BY _____ Deputy

DOCUMENT NO. _____

STATEMENT OF EVIDENCE

The original government corner was set in January 1856, by Government Surveyor Isaac Banker. No evidence of the corner or bearing trees remain. There is a road opening on file at the County Auditor's office across the north line of the Northwest quarter of Section 18. This is dated May 13, 1913. No record of a survey was indicated in the road opening.

In March 2004, we ran a survey around Sections 7, 8, 9, 17, 18, and 19 to tie in existing monumentation and lines of occupation. This corner falls on the centerline of an east-west county road and an old occupation line to the north.

On June 22, we excavated an area 10'x20'x1' into the natural ground on the centerline of the road and fence line north. We found a triangular rock at the location, but no markings. No other evidence was noted in this excavation.

We accepted the centerline of road and the line of occupation as being the best evidence for the location for this corner. We set a Kanabec County monument, took new ties, and established Kanabec County coordinates on this monument.