

CERTIFICATE OF LOCATION OF GOVERNMENT CORNER

NORTH QUARTER Corner of Section 17, Township 41, Range 24, 4TH P.M.
 STATE OF MINNESOTA, County of KANABEC

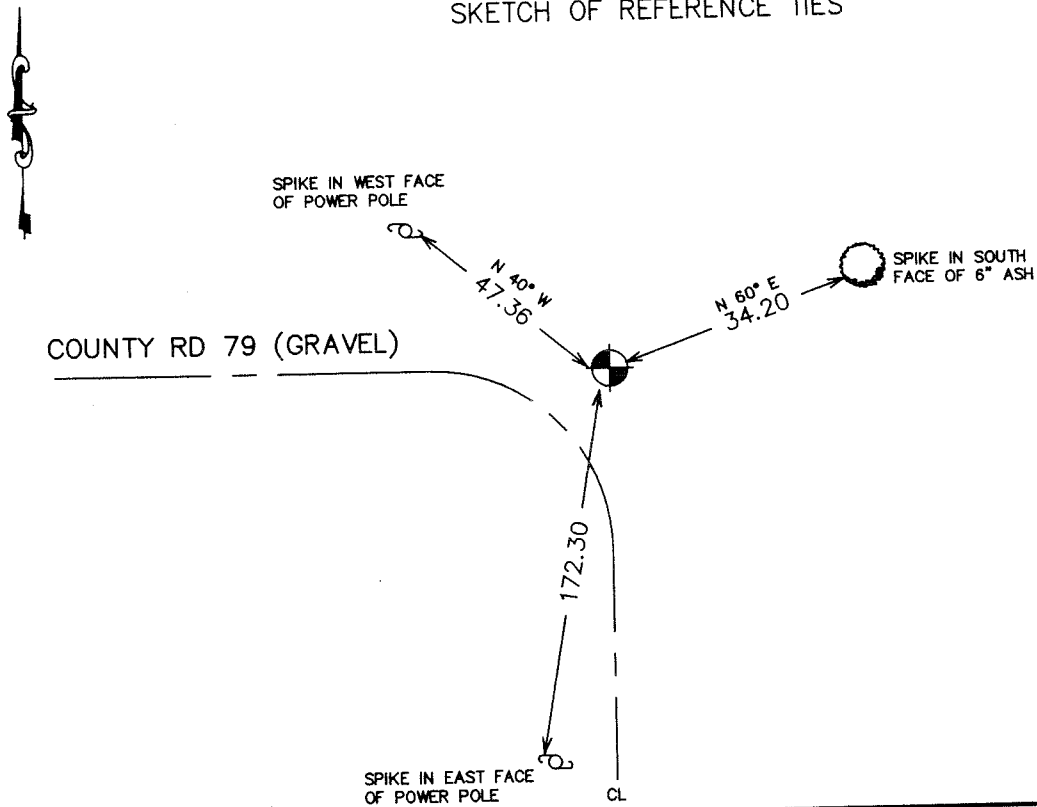
At the corner location shown on the sketch:
 On 06/22/2004 Set a Kanabec County Monument.

Kanabec County U.S. Survey Feet Coordinates
 NAD 1983, HARN 1996 Adjustment
 Obtained by RTK GPS Observation

Northing= 213194.59
 Easting= 372702.80

Note: NAD 1983, HARN 1996 Adjustment
 coordinates are NOT compatible with
 NAD 1983 coordinates
 Note: 1 Meter=3937/1200 U.S. Survey Feet

SKETCH OF REFERENCE TIES



Statement of evidence relative to this corner location is on back of page.

I hereby certify that this document and the data contained herein was prepared by me or under my direct supervision.

Ernest J. Reed 8-03-2004
Signature Date

Registration No. 9808

Land Surveyor, Professional Engineer

County Surveyor, County Engineer

OFFICE OF THE COUNTY RECORDER

County of _____

I hereby certify that this document was filed in the County Recorder's office at _____ M. on the _____ day of _____ A.D., 20____

County Recorder _____

BY _____ Deputy

DOCUMENT NO. _____

STATEMENT OF EVIDENCE

The original government corner was set in January 1856, by Government Surveyor Isaac Banker. No evidence of the corner or bearing trees remain. This corner falls at the intersection of a county road to the west and a county road to the south. There are no road openings on file at the Auditor's Office or surveys in the survey books.

In February 2004, we ran a survey around Sections 7, 8, 9, 17, 18, and 19 to locate existing monumentation and lines of occupation. We set an iron pipe at road intersections.

On June 22, we excavated an area 20'x20'x1' into the natural ground. We found a pointed rock 1' south of our working point. No other evidence was noted in this excavation.

We accepted the pointed rock at the road intersections as the best evidence for this corner. We set a Kanabec County monument, took new ties, and established Kanabec County coordinates on this monument.