

CERTIFICATE OF LOCATION OF GOVERNMENT CORNER

NORTHEAST Corner of Section 18, Township 41, Range 24, 4TH P.M.

STATE OF MINNESOTA, County of KANABEC

At the corner location shown on the sketch:
On 07/ /2004 Set a Kanabec County Monument.

Kanabec County U.S. Survey Feet Coordinates
NAD 1983, HARN 1996 Adjustment
Obtained by RTK GPS Observation

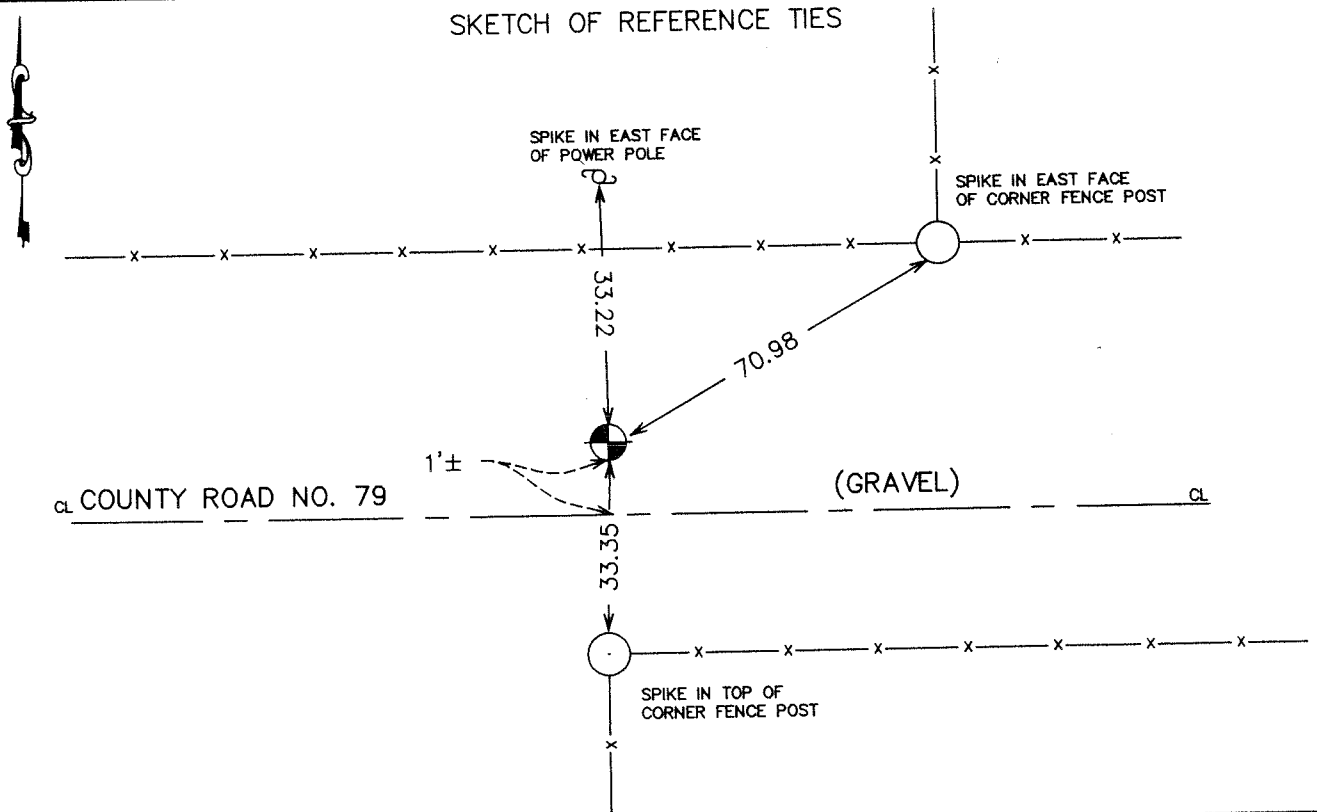
Northing= 213180.73

Easting= 370070.88

Note: NAD 1983, HARN 1996 Adjustment
coordinates are NOT compatible with
NAD 1983 coordinates

Note: 1 Meter=3937/1200 U.S. Survey Feet

SKETCH OF REFERENCE TIES



Statement of evidence relative to this corner location is on back of page.

I hereby certify that this document and the data contained herein was prepared by me or under my direct supervision.

Ernst J. Rud
Signature

7-25-2004
Date

Registration No. 9808

Land Surveyor, [] Professional Engineer

[] County Surveyor, [] County Engineer

OFFICE OF THE COUNTY RECORDER

County of _____

I hereby certify that this document was filed in the County Recorder's office at _____ M. on the _____ day of _____ A.D., 20____

County Recorder _____

BY _____ Deputy

DOCUMENT NO. _____

STATEMENT OF EVIDENCE

The original government corner was set in January 1856 by Government Surveyor Isaac Banker. No evidence of the corner or bearing trees remain. There are no road openings on file at the Auditor's Office or surveys on record in there survey books.

In March 2004, we ran a survey around Sections 7, 8, 9, 17, 18 and 19 to tie in existing monumentation and lines of occupation.

This corner falls in the centerline of an east-west county road and an old fence line to the south.

On June 23, 2004, we excavated an area 12'X20'X1' into natural ground. We found no monument or evidence to its location. We accepted the centerline of the road and the fence line to the south as the best location for this corner. This position fit a proportional distance to the north and west. We set a Kanabec County monument, took ties and established Kanabec County coordinates on this monument.