

**CERTIFICATE OF LOCATION OF GOVERNMENT CORNER**

East Quarter Corner of Section 18, Township 41 North, Range 24 West,  
4th Principal Meridian, Kanabec County, State of Minnesota

At the corner location shown on the sketch:

On 3/16/2017 set a 7/8" x 20 Rebar Monument with  
Aluminum Cap at a lost position.

Kanabec County U.S. Survey Feet Coordinates  
NAD 1983, HARN 1996 Adjustment  
Obtained by RTK GPS observation  
Northing: 210603.2700  
Easting: 370011.1231

Note: NAD 1983, HARN 1996 Adjustment  
coordinates are NOT compatible with  
NAD 1983 coordinates

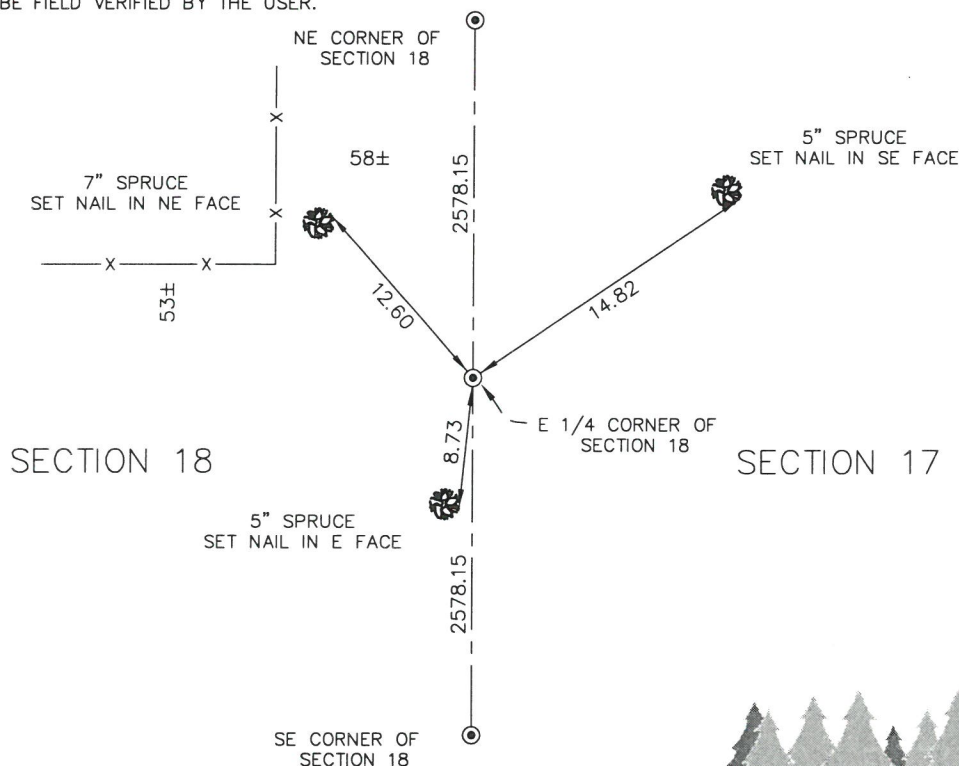
Note: 1 Meter = 3937/1200 U.S. Survey Feet

**SKETCH OF REFERENCE TIES**

NOT TO SCALE

KROSCHER LAND SURVEYORS, INC.  
ASSUMES NO LIABILITY FOR THE ACCURACY  
OF THE GPS COORDINATES SHOWN HEREON.  
ALL COORDINATES AND DIMENSIONS  
SHOULD BE FIELD VERIFIED BY THE USER.

THE BASIS OF BEARINGS FOR THIS  
DRAWING IS THE KANABEC COUNTY  
COORDINATE SYSTEM BY MNDOT,  
NAD 1983, HARN 1996 ADJUSTMENT



**Kroschel Land Surveyors, Inc.**

1639 Main Street North, Suite 6, Pine City, MN 55063  
Phone: 320-629-3267 Fax: 320-629-0176

Statement of evidence relative to this corner location is on back of page.

I hereby certify that this survey, plan, or report was  
prepared by me or under my direct supervision, that  
the United States public land survey monument  
record is correct and complete to the best of my  
knowledge and belief, and that I am a duly Licensed  
Land Surveyor under the laws of the State of  
Minnesota.

Tyler J. Kroschel

Date

License No. 44490

☐ Land Surveyor

☒ County Surveyor

**OFFICE OF THE COUNTY RECORDER**

County of Kanabec

I hereby certify that this document was filed in the  
County Recorder's office at \_\_\_\_\_ .M. on the  
\_\_\_\_\_ day of \_\_\_\_\_ A.D., 20\_\_\_\_  
County Recorder \_\_\_\_\_

By \_\_\_\_\_, Deputy

DOCUMENT NO. \_\_\_\_\_

Statement of Evidence:

In December of 1855, Deputy Surveyor Isaac Banker set a post to mark the East Quarter Corner of Section 18, Township 41 North, Range 24 West, 4th Principal Meridian.

Reference ties were taken to:

8 inch Tamarack at North 87 degrees 15 minutes West a distance of 18 links  
12 inch White Birch at South 84 degrees East a distance of 21 links

All of the original Government corner evidence was searched for. None was found.

There is no resurvey information on file for this corner.

In March 2017, a survey was made around Section 18, Township 41 North, Range 24 West, 4th Principal Meridian for Stormy Halvorson to locate existing monuments, lines of occupation and establish search areas.

On 3/16/2017 I made a search with a metal locator halfway and on a straight line between the northeast and southeast corners of Section 18. No evidence of the corner was found. I determined the corner lost and set a 7/8" x 20" Rebar Monument with Aluminum Cap halfway and on-line between the northeast and southeast corners of Section 18.

I accepted this location as the best available evidence of the original corner location. Established reference ties and assigned Kanabec County Coordinates.



**Kroschel Land Surveyors, Inc.**

1639 Main Street North, Suite 6, Pine City, MN 55063  
Phone: 320-629-3267 Fax: 320-629-0176