

# CERTIFICATE OF LOCATION OF GOVERNMENT CORNER

NORTH QUARTER Corner of Section 19, Township 41, Range 24, 4TH P.M.

STATE OF MINNESOTA, County of KANABEC

At the corner location shown on the sketch:  
IN JAN. 2005 SET #7 REBAR WITH ALUMINUM CAP  
AND ESTABLISHED G.P.S. COORDINATES ON ITS LOCATION.

Kanabec County U.S. Survey Feet Coordinates  
NAD 1983, HARN 1996 Adjustment  
Obtained by RTK GPS Observation

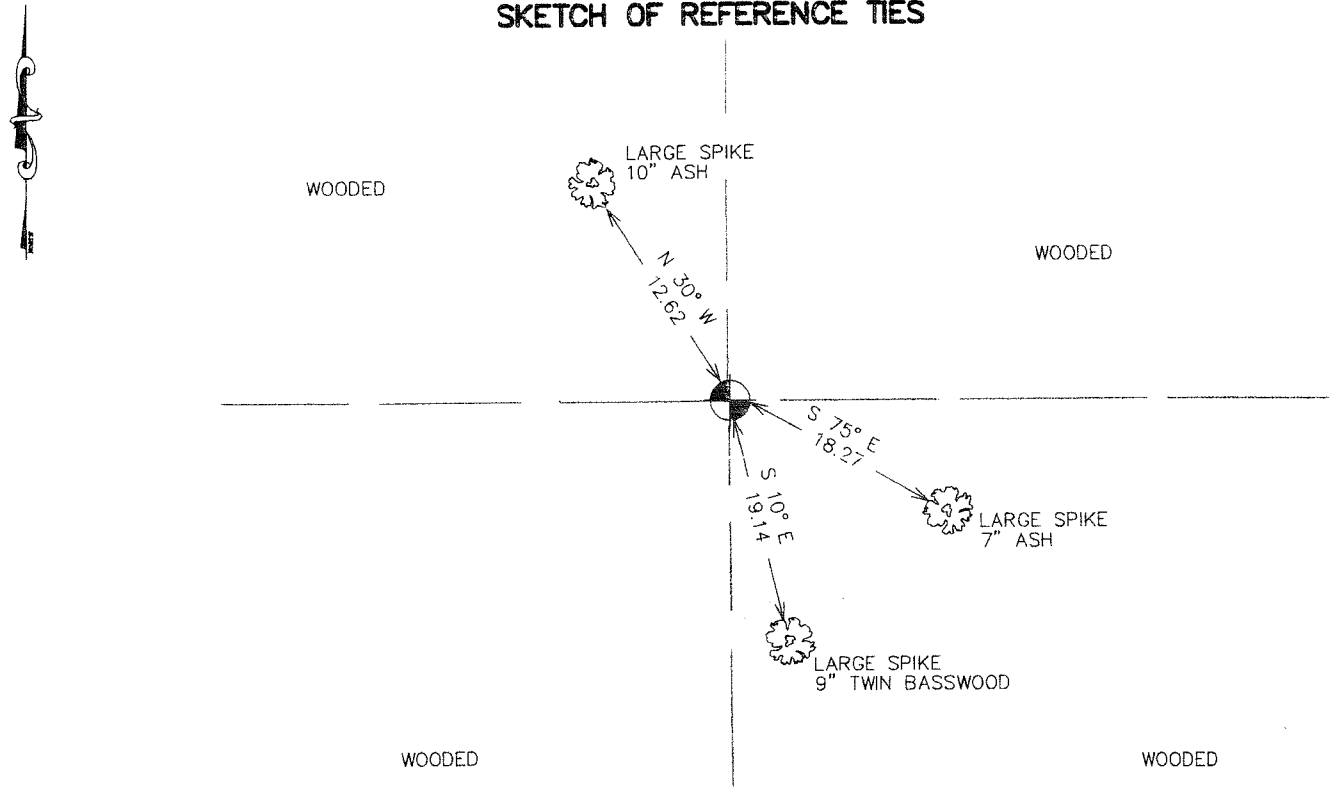
Northing= 208024.284

Easting= 367424.719

Note: NAD 1983, HARN 1996 Adjustment  
coordinates are NOT compatible with  
NAD 1983 coordinates

Note: 1 Meter=3937/1200 U.S. Survey Feet

## SKETCH OF REFERENCE TIES



Statement of evidence relative to this corner location is on back of page.

I hereby certify that this document and the data contained herein was prepared by me or under my direct supervision.

Ernest L Reed 1-03-2007  
Signature Date

Registration No. Minn No 9808

- Land Surveyor,  Professional Engineer
- County Surveyor,  County Engineer

### OFFICE OF THE COUNTY RECORDER

County of \_\_\_\_\_

I hereby certify that this document was filed in the County Recorder's office at \_\_\_\_\_ M. on the

\_\_\_\_\_ day of \_\_\_\_\_ A.D., 20 \_\_\_\_\_

County Recorder \_\_\_\_\_

BY \_\_\_\_\_ Deputy

DOCUMENT NO. \_\_\_\_\_

NORTH QUARTER CORNER SECTION 19, T41, R24

**STATEMENT OF EVIDENCE**

THE ORIGINAL CORNER WAS SET BY DEPUTY SURVEYOR ISAAC BANKER IN JANUARY 1856. ANY EVIDENCE FOR THE CORNER OR BEARING TREES NO LONGER REMAIN. NO RECORDS OF SUBSEQUENT SURVEYS COULD BE FOUND.

IN JANUARY 2005 E.G. RUD AND SONS RAN A SURVEY AROUND SECTIONS 7, 8, 17, 18, 19, AND 20 TO LOCATE EXISTING MONUMENTATION AND LINES OF OCCUPATION. THIS CORNER FALLS IN A HEAVILY WOODED AREA WITH THE ONLY LINES OF OCCUPATION BEING AN EAST-WEST FENCE PUT IN BY DONALD OLSON OWNER OF LAND ON BOTH THE NORTH AND SOUTH SIDE OF THE SECTION LINE. WE THEREFORE SET THIS CORNER AT A PROPORTIONATE MEASUREMENT BETWEEN THE NORTHWEST CORNER OF SECTION 19 AND THE NORTH QUARTER CORNER OF SECTION 20 AND ON LINE BETWEEN THE NORTHWEST AND NORTHEAST CORNERS OF SECTION 19.

TIES WERE TAKEN AND KANABEC COUNTY COORDINATES WERE ESTABLISHED USING G.P.S. EQUIPMENT.