

# CERTIFICATE OF LOCATION OF GOVERNMENT CORNER

NORTH QUARTER Corner of Section 20, Township 41, Range 24, 4TH P.M.

STATE OF MINNESOTA, County of KANABEC

At the corner location shown on the sketch:  
On 05/ /2004 Found a Kanabec County Monument.

Kanabec County U.S. Survey Feet Coordinates  
NAD 1983, HARN 1996 Adjustment  
Obtained by RTK GPS Observation

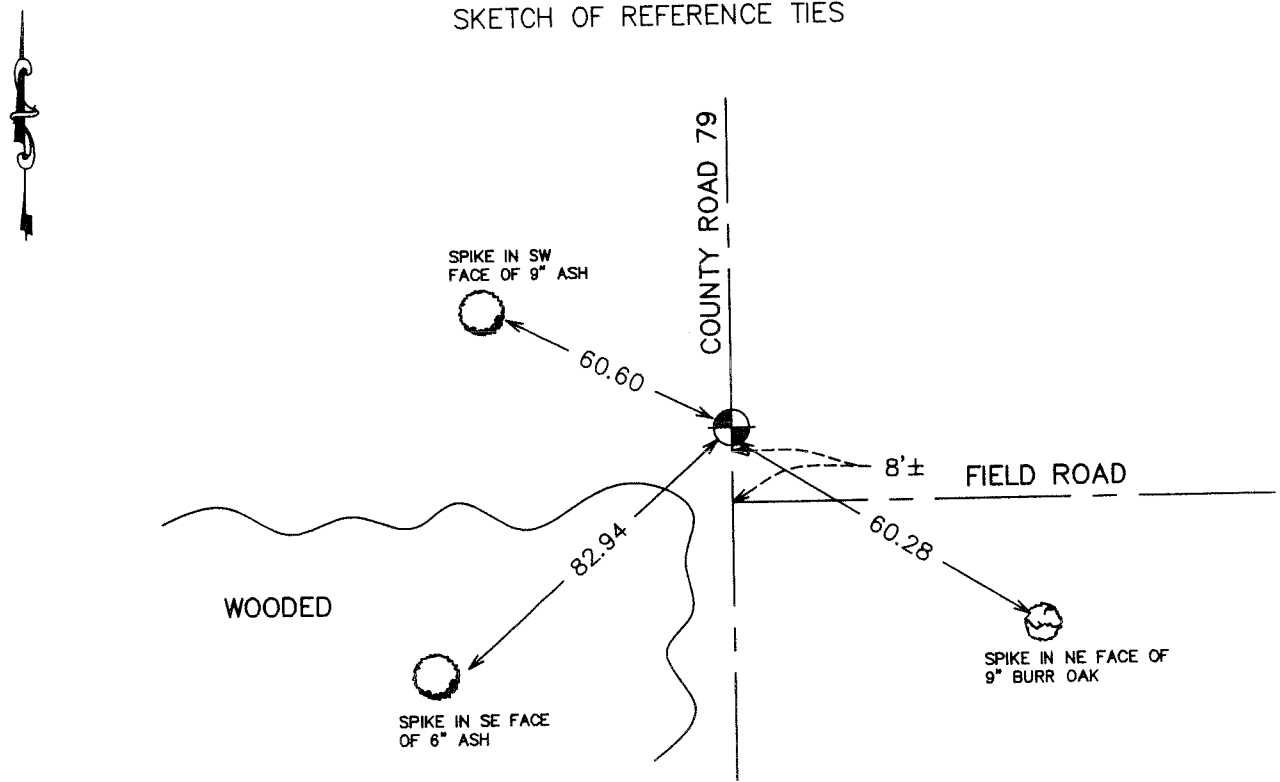
Northing= 207992.77

Easting= 372472.16

Note: NAD 1983, HARN 1996 Adjustment  
coordinates are NOT compatible with  
NAD 1983 coordinates

Note: 1 Meter=3937/1200 U.S. Survey Feet

SKETCH OF REFERENCE TIES



Statement of evidence relative to this corner location is on back of page.

I hereby certify that this document and the data contained herein was prepared by me or under my direct supervision.

Ernest J. Reed  
Signature

8-03-2004  
Date

Registration No. 9808

Land Surveyor,     Professional Engineer

County Surveyor,     County Engineer

### OFFICE OF THE COUNTY RECORDER

County of \_\_\_\_\_

I hereby certify that this document was filed in the County Recorder's office at \_\_\_\_\_ M. on the \_\_\_\_\_ day of \_\_\_\_\_ A.D., 20\_\_\_\_

County Recorder \_\_\_\_\_

BY \_\_\_\_\_ Deputy

**DOCUMENT NO.** \_\_\_\_\_

STATEMENT OF EVIDENCE  
N1/4 COR SEC 20, T41, R24

The original Section corner was set by Isaac Banker in 1855. The original corner and ties no longer remain. No record of subsequent survey at County.

I met with Rick Marten, whose family has owned the E1/2 of Section 17 since 1914. He remembered his grandfather showing him the location of this section corner. Rick pointed out this location and we found a 1" solid rod down 18". I replaced this rod with a Kanabec County monument, tied out the location, and included it in my survey of Section 21.

In May 2004, we ran a survey around Section 20, and we established Kanabec County coordinates on this monument using GPS equipment.