

CERTIFICATE OF LOCATION OF GOVERNMENT CORNER

NORTHEAST Corner of Section 19, Township 41, Range 24, 4TH P.M.

STATE OF MINNESOTA, County of KANABEC

At the corner location shown on the sketch:
On 07/ /2004 Set a Kanabec County Monument.

Kanabec County U.S. Survey Feet Coordinates
NAD 1983, HARN 1996 Adjustment
Obtained by RTK GPS Observation

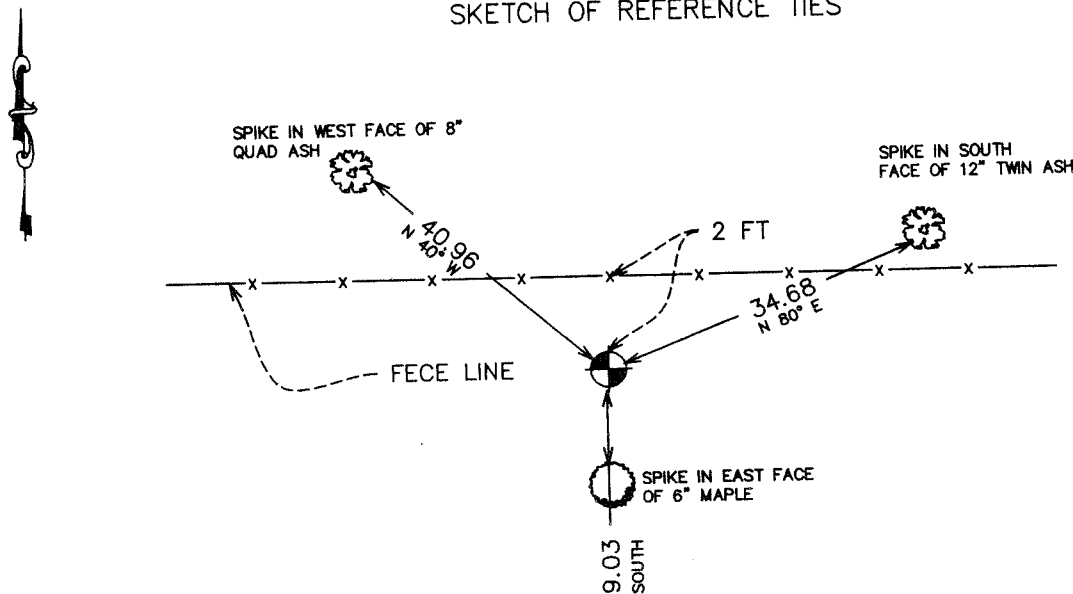
Northing= 208025.77

Easting= 369951.37

Note: NAD 1983, HARN 1996 Adjustment
coordinates are NOT compatible with
NAD 1983 coordinates

Note: 1 Meter=3937/1200 U.S. Survey Feet

SKETCH OF REFERENCE TIES



Statement of evidence relative to this corner location is on back of page.

I hereby certify that this document and the data contained herein was prepared by me or under my direct supervision.

Ernest H. Hild
Signature

8-03-2004
Date

Registration No. 9808

Land Surveyor, Professional Engineer

County Surveyor, County Engineer

OFFICE OF THE COUNTY RECORDER

County of _____

I hereby certify that this document was filed in the County Recorder's office at _____ M. on the _____ day of _____ A.D., 20____

County Recorder _____

BY _____ Deputy

DOCUMENT NO. _____

STATEMENT OF EVIDENCE

The original government corner was set in January 1856, by Government Surveyor Isaac Banker. No evidence of the corner or bearing trees remain. There are no records of any subsequent surveys at Kanabec County Offices.

In April 2004, we ran a survey around Sections 7, 8, 9, 17, 18, and 19 to locate existing monumentation and lines of occupation.

We talked to Rick Martin, former land owner in NW1/4 of Sec 20 and NE1/4 Sec 19, Dan Tramm and Eugene Miller, land owners in SE 1/4 of Sec 18. All land owners believed the east-west fence was the property line in the north-south direction, but had no idea where it was east-west. Therefore, we set the corner at a prorated government chainage from the North Quarter corner of Section 20 to the Northwest corner of Section 19. This fell 2 feet south of the fence line.

We set a Kanabec County monument, took new ties, and established Kanabec County coordinates on this monument.