

CERTIFICATE OF LOCATION OF GOVERNMENT CORNER

East Quarter Corner of Section 19, Township 41 North, Range 24 West,
4th Principal Meridian, Kanabec County, State of Minnesota

At the corner location shown on the sketch:
On 5/28/2013 set a 7/8" x 36" Rebar Monument with Aluminum Cap.

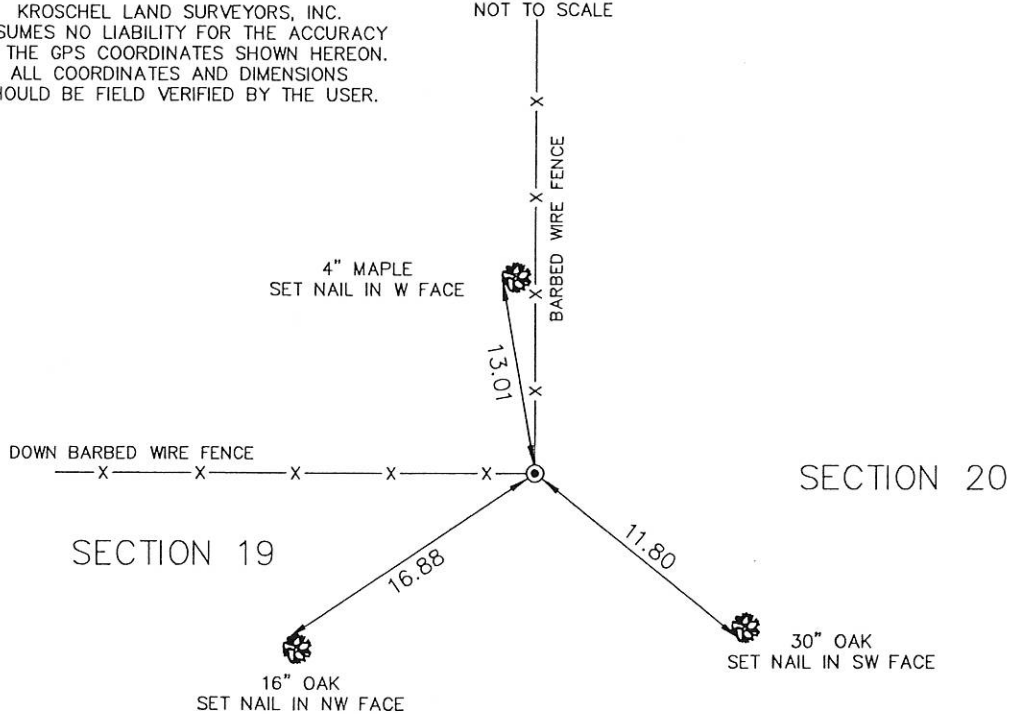
Kanabec County U.S. Survey Feet Coordinates
NAD 1983, HARN 1996 Adjustment
Obtained by RTK GPS observation
Northing: 205383.6678
Easting: 369734.9698

Note: NAD 1983, HARN 1996 Adjustment coordinates are NOT compatible with NAD 1983 coordinates
Note: 1 Meter = 3937/1200 U.S. Survey Feet

SKETCH OF REFERENCE TIES

KROSCHEL LAND SURVEYORS, INC.
ASSUMES NO LIABILITY FOR THE ACCURACY OF THE GPS COORDINATES SHOWN HEREON.
ALL COORDINATES AND DIMENSIONS SHOULD BE FIELD VERIFIED BY THE USER.

NOT TO SCALE



114/49



Kroschel Land Surveyors, Inc.

1639 Main Street North, Suite 6, Pine City, MN 55063
Phone: 320-629-3267 Fax: 320-629-0176

Statement of evidence relative to this corner location is on back of page.

I hereby certify that this survey, plan, or report was prepared by me or under my direct supervision, that the United States public land survey monument record is correct and complete to the best of my knowledge and belief, and that I am a duly Licensed Land Surveyor under the laws of the State of Minnesota.

Tyler J. Kroschel

1-14-2014
Date

License No. 44490

Land Surveyor County Surveyor

OFFICE OF THE COUNTY RECORDER
County of Kanabec

I hereby certify that this document was filed in the County Recorder's office at _____ M. on the _____ day of _____ A.D., 20____

County Recorder _____

By _____, Deputy

DOCUMENT NO. _____

Statement of Evidence:

In December of 1855, Deputy Surveyor Isaac Banker set a post to mark the East Quarter Corner of Section 19, Township 41 North, Range 24 West, 4th Principal Meridian.

All of the original Government corner evidence was searched for. None was found.

There is no resurvey information available for this corner.

In May 2013, I made a survey around Section 20, Township 41, Range 24, 4th Principal Meridian for Gordon Engels to locate existing monuments, lines of occupation and establish search areas.

On 5/28/2013 I made a search with a metal locator at two locations. The first was at a lost position. No evidence of the corner was found. The second was at an old fence corner running north and west. The occupation lines in the Southwest Quarter of Section 20 and the Southeast Quarter of Section 19 seem to agree with the fence corner location. I set a 7/8" x 36" Rebar monument with Aluminum Cap at the fence corner running north and west. Established reference ties and assigned Kanabec County coordinates.

This location was determined to be the best available evidence of the original government corner monument location.



Kroschel Land Surveyors, Inc.

1639 Main Street North, Suite 6, Pine City, MN 55063
Phone: 320-629-3267 Fax: 320-629-0176