

CERTIFICATE OF LOCATION OF GOVERNMENT CORNER

NORTH QUARTER Corner of Section 30, Township 41, Range 24, 4TH P.M.

STATE OF MINNESOTA, County of KANABEC

At the corner location shown on the sketch:
On 06/ /2004 Set a Kanabec County Monument.

Kanabec County U.S. Survey Feet Coordinates
NAD 1983, HARN 1996 Adjustment
Obtained by RTK GPS Observation

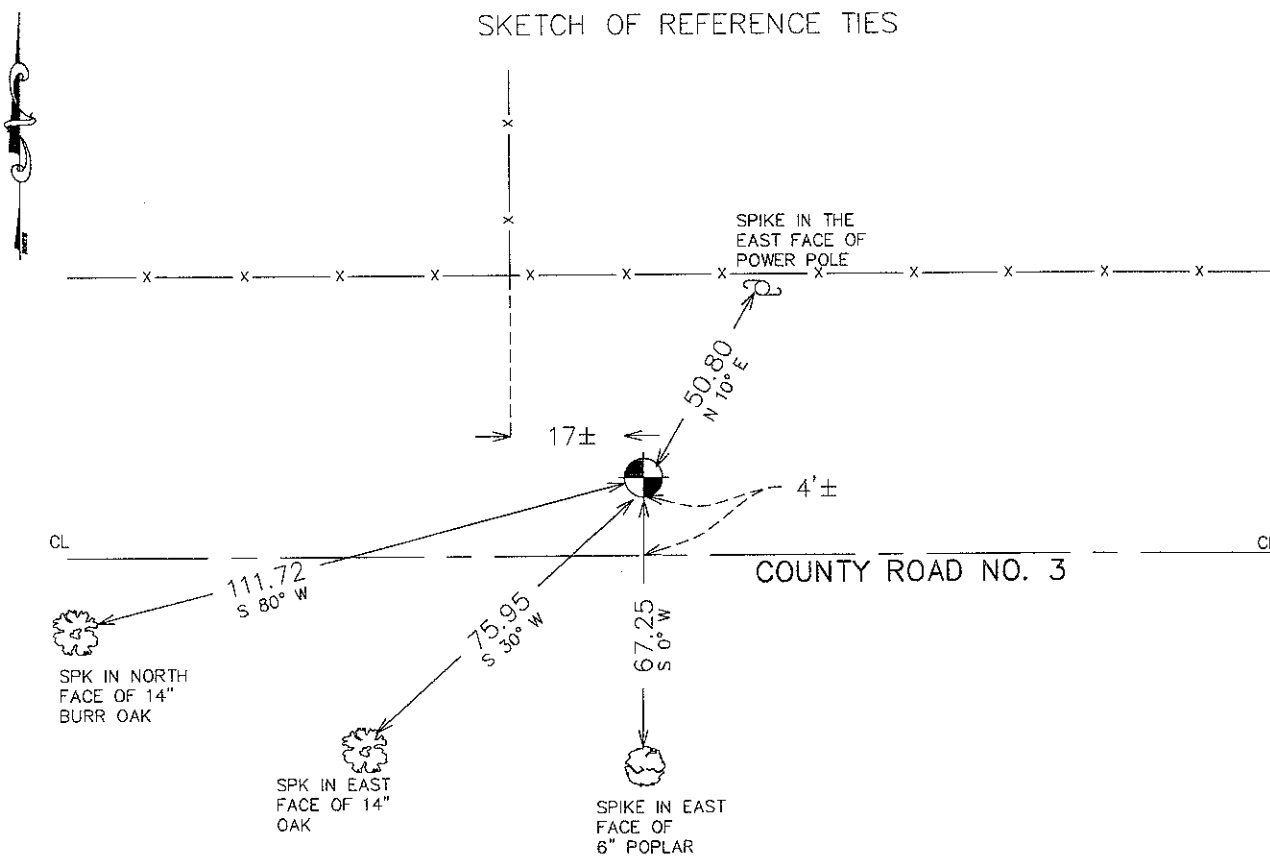
Northing= 202769.58

Easting= 367060.28

Note: NAD 1983, HARN 1996 Adjustment
coordinates are NOT compatible with
NAD 1983 coordinates

Note: 1 Meter=3937/1200 U.S. Survey Feet

SKETCH OF REFERENCE TIES



Statement of evidence relative to this corner location is on back of page.

I hereby certify that this document and the data contained herein was prepared by me or under my direct supervision.

Ernest Blud
Signature

2-02-2010
Date

Registration No. 9808

- Land Surveyor, Professional Engineer
 County Surveyor, County Engineer

OFFICE OF THE COUNTY RECORDER

County of _____

I hereby certify that this document was filed in the County Recorder's office at _____ M. on the _____ day of _____ A.D., 20____

_____ day of _____ A.D., 20____

County Recorder _____

BY _____ Deputy

DOCUMENT NO. _____

STATEMENT OF EVIDENCE

(FROM TIE SHEET 421)

Set monument from 1" x 2" hub found in excavation about 2' down. Hub fit centerline of the east-west roads and occupation lines well.

Also M.B. Rude made a resurvey of County Road #3 and found this point good for the corner.

(2004)

In June 2004, we ran a survey around Sections 7, 8, 18, 19, and 20 to locate existing monuments and tie in lines of occupation. We reset this corner from M.B. Rude's survey of County Road 3 and established Kanabec County coordinates on the monument using GPS equipment. We also took new ties.