

CERTIFICATE OF LOCATION OF GOVERNMENT CORNER

North Quarter Corner of Section 32, Township 41 North, Range 24 West,
4th Principal Meridian, Kanabec County, State of Minnesota

At the corner location shown on the sketch:
Set a 7/8" x 36" Rebar Monument with Aluminum Cap at a lost position.

Kanabec County U.S. Survey Feet Coordinates
NAD 1983, HARN 1996 Adjustment
Obtained by RTK GPS observation
Northing: 197449.1731
Easting: 372261.0215

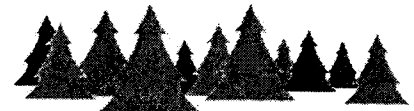
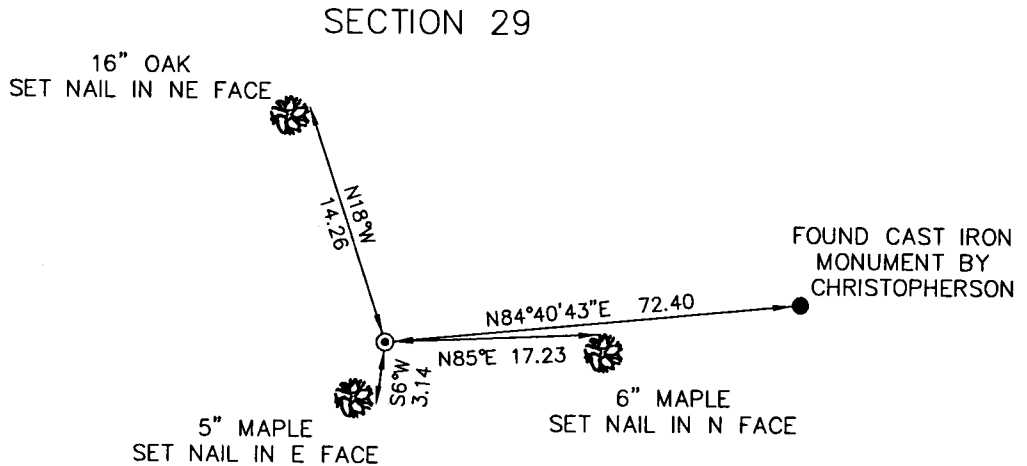
Note: NAD 1983, HARN 1996 Adjustment coordinates are NOT compatible with NAD 1983 coordinates

Note: 1 Meter = 3937/1200 U.S. Survey Feet

SKETCH OF REFERENCE TIES

NOT TO SCALE

KROSCHEL LAND SURVEYORS, INC.
ASSUMES NO LIABILITY FOR THE ACCURACY OF THE GPS COORDINATES SHOWN HEREON.
ALL COORDINATES AND DIMENSIONS SHOULD BE FIELD VERIFIED BY THE USER.



Kroschel Land Surveyors, Inc.

1639 Main Street North, Suite 6, Pine City, MN 55063
Phone: 320-629-3267 Fax: 320-629-0176

Statement of evidence relative to this corner location is on back of page.

I hereby certify that this survey, plan, or report was prepared by me or under my direct supervision, that the United States public land survey monument record is correct and complete to the best of my knowledge and belief, and that I am a duly Licensed Land Surveyor under the laws of the State of Minnesota.

Tyler J. Kroschel
Date 3-1-2019

License No. 44490
 Land Surveyor County Surveyor

OFFICE OF THE COUNTY RECORDER

County of Kanabec

I hereby certify that this document was filed in the County Recorder's office at 11:00 A.M. on the 22 day of October A.D., 2020
County Recorder Sara H. [Signature]

By _____, Deputy
DOCUMENT NO. _____

Statement of Evidence:

In December of 1855 Deputy Surveyor Isaac Banker set a post to mark the North Quarter corner of Section 32, Township 41 North, Range 24 West of the 4th Principal Meridian.

Reference ties were taken to:

19 inch Sugar at North 30 degrees 45 minutes West a distance of 37 links
22 inch White Oak at South 45 degrees East a distance of 21 links

All of the original Government evidence was searched for. None was found.

2004—Hakanson—Anderson Associates (Charles Christopherson, LS 18420) made a survey around Sections 31 and 32. It appears Mr. Christopherson set a Cast Iron Monument at the North Quarter corner of Section 32 using a proportioned location between the Northwest corner of Section 32 and the Northeast corner of Section 34. No Government Corner Certificate was filed.

2010—Minnesota DNR Surveyor Dan Nickols, LS 19839 made a survey around Section 28 and filed a Certificate of Location of Government Corner for the Southwest corner of Section 28, at a lost position using the Northwest corner of Section 32 and the Northeast corner of Section 33 for proportioning.

In January of 2017 I made a survey around Section 32, Township 41, Range 24 for Garland Finch to locate existing monuments, lines of occupation and establish search areas.

On 1/25/2017 I found the Cast Iron Monument placed by Christopherson. The Cast Iron Monument was placed by different proportioning control than was the Northeast corner of Section 32. In my opinion, the Northeast corner of Section 33 should have been established and used as control for proportioning in this area. I left the Cast Iron Monument as found and placed a 7/8" x 36" Rebar Monument with Aluminum Cap at a lost position between the recorded Northwest and Northeast corners of Section 32. This position is approximately 72 feet west of the found Cast Iron Monument.

I measure N89°56'05"W 2627.02 feet to the Northwest corner of Section 32 and S89°56'05"E 2627.02 feet to the Northeast corner of Section 32. Assigned Kanabec County coordinates and established reference ties as shown.

This location was determined to be the best available evidence of the original government corner monument location.



Kroschel Land Surveyors, Inc.

1639 Main Street North, Suite 6, Pine City, MN 55063
Phone: 320-629-3267 Fax: 320-629-0176